

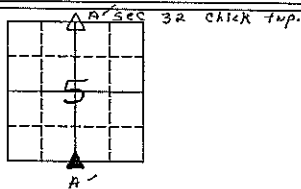
Section 32-95-14
As referred to in
Engr. Tie Book

PREPARED BY - S & S LAND SURVEYING, INC., 118 W BREWER AVE., PO BOX 148, WAVERLY, IOWA 50877 - PHONE 319-352-9444

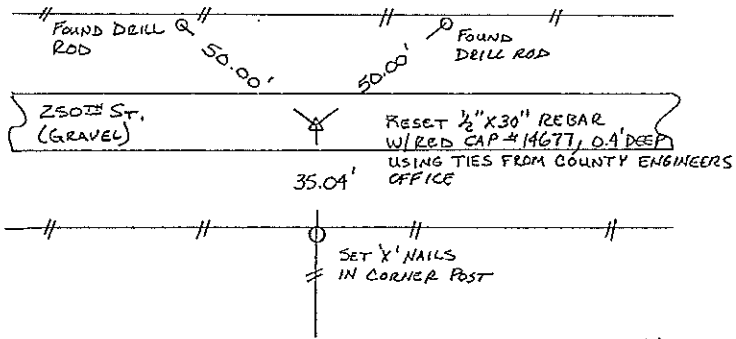
UNITED STATES PUBLIC LAND SURVEY CORNER CERTIFICATE

OF 32 95
Land Survey Monuments situated in Section 5, Township 94 NORTH, Range 14 WEST, of the Fifth Principal Meridian, CHICKASAW County, Iowa.
Previously recorded in Book _____, Page _____.

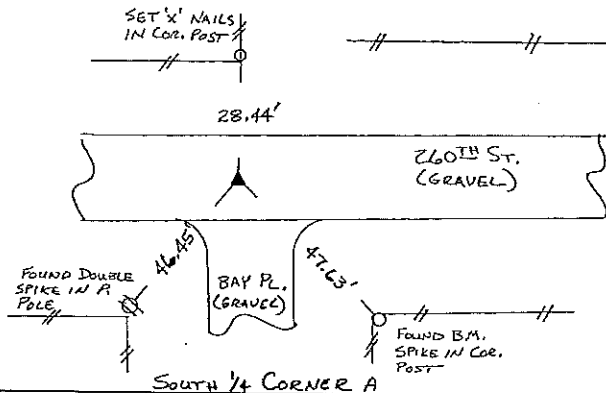
CORNERS WERE LOCATED FOR LAND SURVEY IN THE SOUTHWEST QUARTER, USING TIES OBTAINED FROM THE CHICKASAW COUNTY ENGINEERS OFFICE, RECORDED TIES FOR THE SOUTHWEST CORNER CHECKED GOOD.



PLAN-VIEW
NO SCALE



N¹/₄ CORNER A Sec 32-95-14 Chick Twp



SOUTH ¹/₄ CORNER A

I hereby certify that this land surveying document was prepared and the related survey work was performed by me or under my direct personal supervision and that I am a duly Licensed Professional Land Surveyor under the laws of the State of Iowa.

Scott A. Steinfeldt 1/4/00
Scott A. Steinfeldt, P.L.S. date
Iowa License No. 14677
My License Renewal Date is Dec. 31, 2000.

List Corners to be Indexed

Corners	Section	Twp	Range
N ¹ / ₄	cor. A 5	94	14
S ¹ / ₄	cor. A 5 ³²	94 95	14



118 W. BREWER AVE. PO BOX 148
WAVERLY, IOWA 50877
(319) 352-9444

2000-0037