

Prepared by & Return to: Herold - Reicks Surveying, 18 East Main Street, New Hampton, IA 50659, Ph. 641-394-2725

### UNITED STATES PUBLIC LAND SURVEY CORNER CERTIFICATE

Land Survey Monuments situated in Section 29, Township 95 North, Range 14 West of the Fifth Principal Meridian, Chickasaw County, Iowa. 1.) Previously recorded in Bk. 2004, Pg. 1396 in the County Recorder's office. 2.) Previously recorded in Bk. 2007, Pg. 0577 in the County Recorder's office.

This certificate is being prepared in compliance with Iowa Code Chapter 355.11 because:

- 1 & 2
- There is no certificate on file for this corner.
  - There are no longer three valid ties of record.
  - There are changes to reference ties of record.
  - There is change of monumentation of record.
  - To clarify description of record monument (ties).

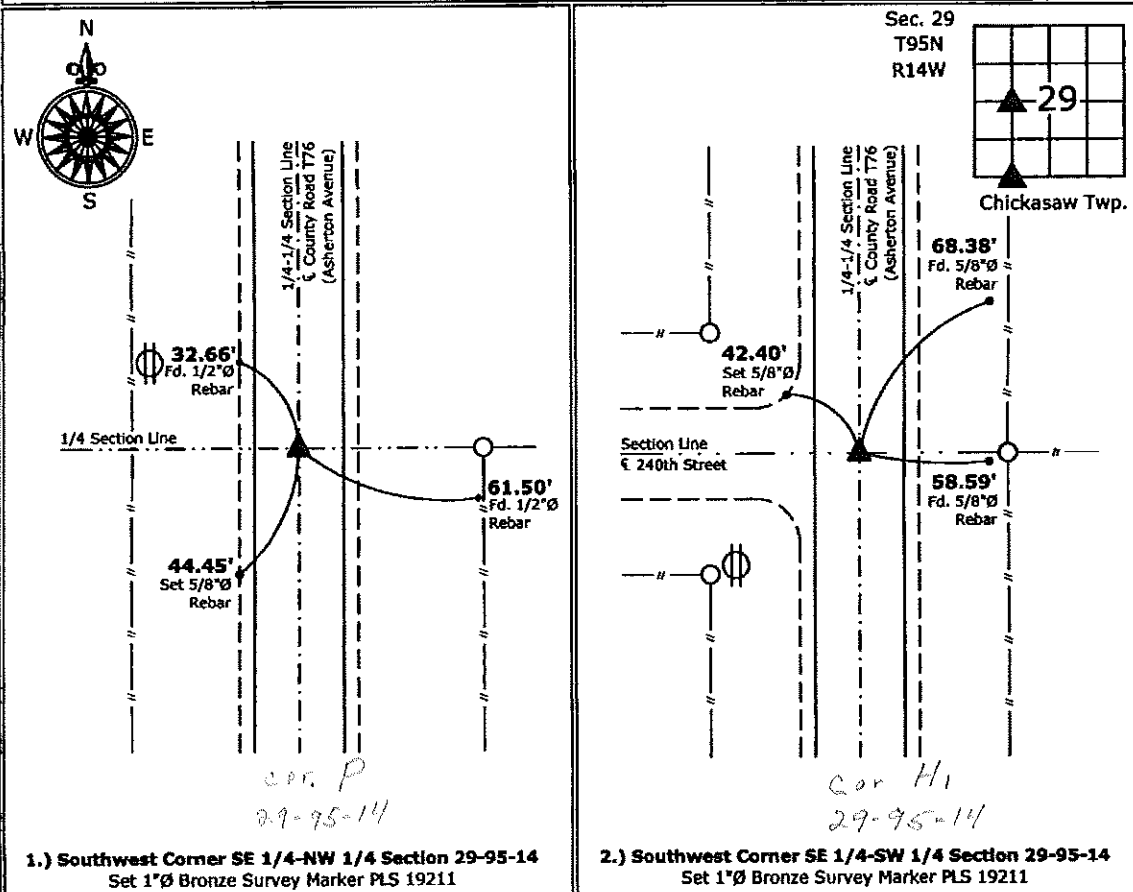
Monument Description and Remarks:

**1.) Southwest Corner SE 1/4-NW 1/4:** Set 1"Ø Bronze Survey Marker PLS 19211 at previous location (Found MAG Nail w/Stainless Steel Washer PLS 16961) by means of coordinates obtained prior to highway reconstruction, Project No. STP-S-CO19(80)--5E-19.

**2.) Southwest Corner SE 1/4-SW 1/4:** Set 1"Ø Bronze Survey Marker PLS 19211 at previous location (Found MAG Nail w/Stainless Steel Washer PLS 11442) by means of coordinates obtained prior to highway reconstruction, Project No. STP-S-CO19(80)--5E

#### PLAN - VIEW

(Show a minimum of three reference ties to durable physical objects, relevant monuments and physical conditions that will enable recovery of the corner.)



I hereby certify that this land surveying document was prepared and the related survey work was performed by me or under my direct personal supervision and that I am a duly licensed Land Surveyor under the laws of the State of Iowa.

*Kirk D. Reicks* 7-5-12  
 Kirk D. Reicks Date:

License number 19211

#### List Corners to be Indexed

Corners	Section	Twp.	Range
SW-SE-NW	29	95	14
SW-SE-SW	29	95	14

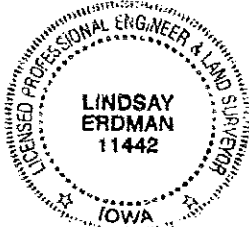
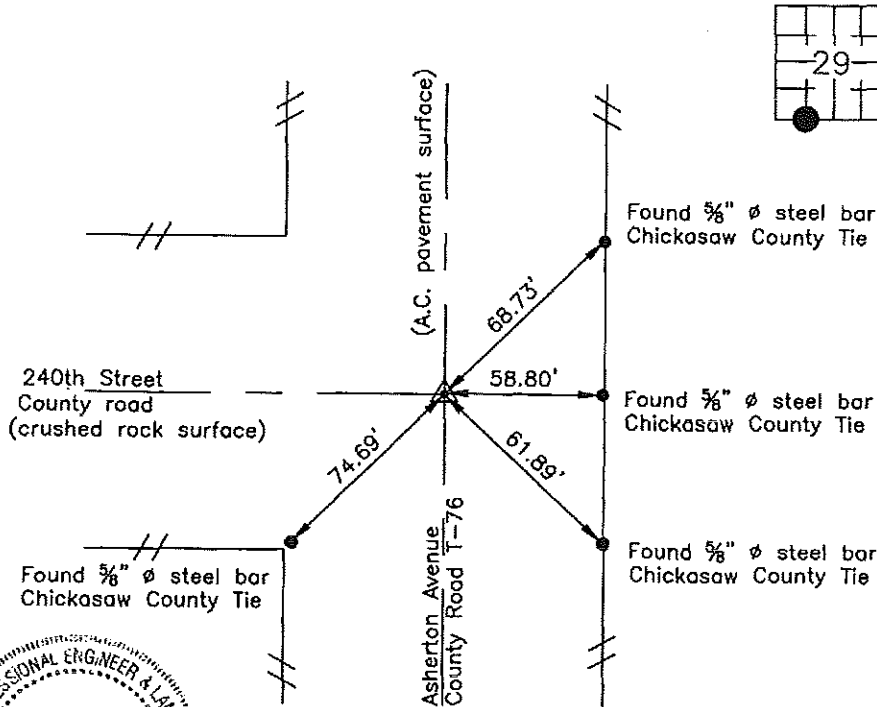
Prepared by: Erdman Engineering, P.C., 708 Commerce Drive, P.O. Box 246, Decorah, Iowa 52101 (563) 382-4194

**United States Public Land Survey Corner Certificate**  
 of

Land Survey Monuments situated in Section 29, Township 95, Range 14 West of the 5th Principal Meridian in Chickasaw County, Iowa. Previously recorded in does not apply in the county Recorder's Office.

Monument Description and Remarks: This certificate is prepared in accordance with Section 193C of the Code of Iowa. No previous certificate has been filed for this corner location. Based on Chickasaw County Engineer's Reference Ties we found four 5/8" diameter steel bars that had been used previously as tie markers. From these ties we searched for iron pin that been previously set in 1962. We did not find the monument as it appears to have been removed when road was resurfaced. We used the ties set a mag-nail with 1 1/2" diameter stainless steel washer #11442 as the SSW 1/8 Corner of Section 29, Township 95 North, Range 14 West.

Plan-View



Cor H1  
 29-95-14

I hereby certify that this land surveying document was prepared and the related survey work was performed by me or under my direct personal supervision and that I am a duly licensed Land Surveyor under the laws of the State of Iowa.

Signature: [Signature]  
 Lindsay Erdman, P.C. and P.L.S. Iowa License Number 11442

Date: 3/22/07

My license renewal date is December 31, 2008

Corner(s) to be indexed

Corner	Section	Township	Range
SSW 1/8	29	95	14