

Section 33-95-14
As referred to in
Engl. Tic Book

FILED 2002-2539
RECORDER'S OFFICE
CHICKASAW COUNTY, IOWA

2002 OCT 23 AM 8 43

CINDY LESSERSMITH
COUNTY RECORDER

TeKIPPE ENGINEERING, P.C., 128 South Vine Street, West Union, Iowa 52175 Phone (563) 422-6131

UNITED STATES PUBLIC LAND SURVEY CORNER CERTIFICATE

OF 33 95
Land Survey Monuments situated in Section 3, Township 94 North, Range 14 West of the Fifth Principal Meridian, CHICKASAW County, Iowa.
Previously recorded in none in County Recorder's Office.
(book, page, document number, etc.)

(Show reason for preparing this certificate, the evidence and detailed procedures used in establishing the corner positions and monumentation found or placed.)

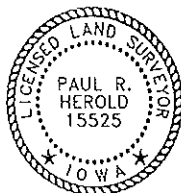
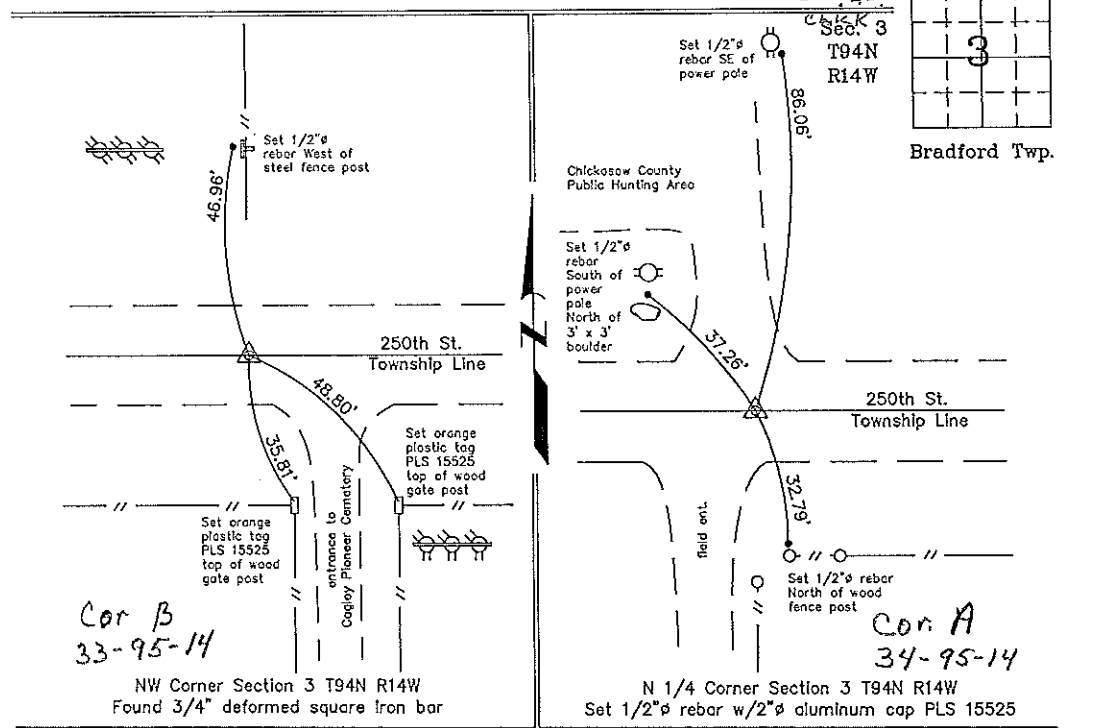
Monument Description and Remarks: NW Corner Section 3 T95N R14W: Found 3/4" deformed iron bar with information obtained from the Chickasaw County Engineer's Office as Corner 'B', Section 33-95-14.

N 1/4 Corner Section 3 T95N R14W: Set 1/2"Ø rebar w/2"Ø aluminum cap PLS 15525 33.00' North of South R.O.W. fence on the extension of the 1/4 Section Line fence from the South as indicated in the Chickasaw County Engineer's Office as Corner 'A', Section 34-95-14.

PLAN - VIEW

Project Number 02241.LS
FB. 46J FG. 44-45

(Show a minimum of three reference ties to durable physical objects, relevant monuments and physical conditions that will enable recovery of the corner.)



I hereby certify that this land surveying document was prepared and the related survey work was performed by me or under my direct personal supervision and that I am a duly licensed Land Surveyor under the laws of the State of Iowa.

Paul R. Herold 10-22-02

Paul R. Herold Date
License number 15525
My license renewal date is December 31, 2002.
Sheets covered by this seal: Individual

List Corners to be Indexed			
Corners	Section	Twp.	Range
NW	3	94N	14W
N 1/4	3	94N	14W

Filed 10-28-02

X:\Section Corners\Sec. 0313-94-14ac.dwg

"County Engineer's"