

Herold - Recks Surveying, 10 East Main Street, New Hampton, IA 50659, Ph. 641-394-2725 Fax 641-394-2718

**UNITED STATES PUBLIC LAND SURVEY CORNER CERTIFICATE**

Land Survey Monuments situated in Section 28, Township 95 North, Range 14 West of the Fifth Principal Meridian, Chickasaw County, Iowa. Previously not recorded in the County Recorder's office.

This certificate is being prepared in compliance with Iowa Code Chapter 355.11 because:

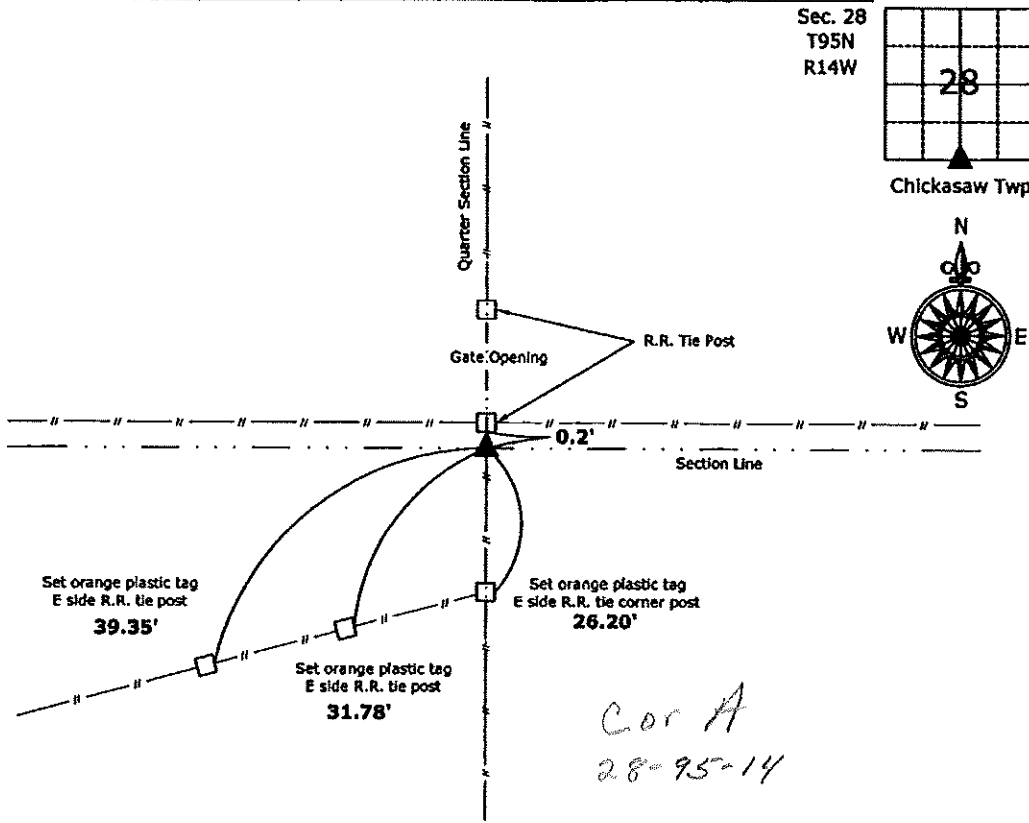
- There is no certificate on file for this corner.
- There are no longer three valid ties of record.
- There are changes to reference ties of record.
- There is change of monumentation of record.
- To clarify description of record monument (ties).

Monument Description and Remarks:

**South Quarter Corner:** Set 5/8"Ø rebar w/2"Ø aluminum cap PLS 15525 at the intersection of possession line fences.

**PLAN - VIEW**

(Show a minimum of three reference ties to durable physical objects, relevant monuments and physical conditions that will enable recovery of the corner.)



**South Quarter Corner Section 28-95-14**  
 Set 5/8"Ø rebar w/2"Ø aluminum cap PLS 15525



I hereby certify that this land surveying document was prepared and the related survey work was performed by me or under my direct personal supervision and that I am a duly licensed Land Surveyor under the laws of the State of Iowa.

Paul R. Herold 12-31-09  
 Paul R. Herold Date:  
 License number 15525  
 My license renewal date is December 31, 2010.  
 Sheets covered by this seal: Individual sheet only

List Corners to be Indexed			
Corners	Section	Twp.	Range
S 1/4	28	95	14
Project Number: 2009-148			
FB: Chickasaw County 2, Pgs. 23-26			

File: S:\\_Projects\2009-148\dwg\2009-148.dwg, 12/10/2009 3:10:49 PM

Section 22-95-14  
 AS referred to in  
 Eng. Trc Book

TeKIPPE ENGINEERING, P.C., 128 South Vine Street, West Union, Iowa 52175 Phone (319) 422-5131

UNITED STATES PUBLIC LAND SURVEY CORNER CERTIFICATE

OF 22

Land Survey Monuments situated in Section 23, Township 95 North, Range 14 West of the Fifth Principal Meridian, CHICKASAW County, Iowa.

Previously recorded in none in County Recorder's Office.  
(book, page, document number, etc.)

(Show reason for preparing this certificate, the evidence and detailed procedures used in establishing the corner positions and monumentation found or placed.)

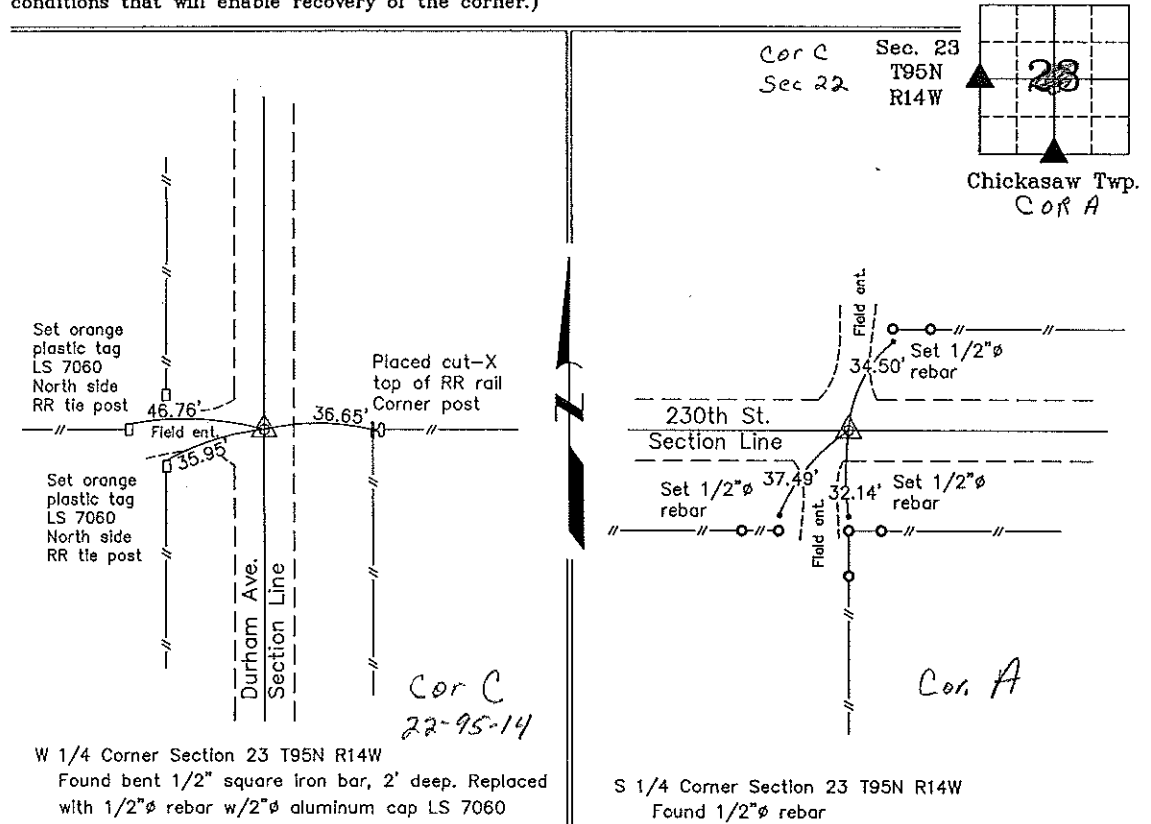
Monument Description and Remarks: W 1/4 Corner Section 23 T95N R14W: Found bent 1/2" square iron bar, 2' deep, on the extension of a quarter section line fence to the centerline of Durham Ave. Replaced iron bar with 1/2"Ø rebar w/2"Ø aluminum cap LS 7060.

S 1/4 Corner Section 23 T95N R14W: Found 1/2"Ø rebar with information obtained from the Chickasaw County Engineer's Office in the Field Book for Chickasaw Twp. Corner Ties, Corner 'A', Section 23.

PLAN - VIEW

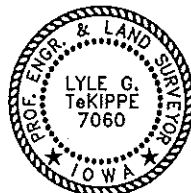
Project Number 00125.LS  
 FB 46G PG. 70-74

(Show a minimum of three reference ties to durable physical objects, relevant monuments and physical conditions that will enable recovery of the corner.)



W 1/4 Corner Section 23 T95N R14W  
 Found bent 1/2" square iron bar, 2' deep. Replaced with 1/2"Ø rebar w/2"Ø aluminum cap LS 7060

S 1/4 Corner Section 23 T95N R14W  
 Found 1/2"Ø rebar



I hereby certify that this land surveying document was prepared and the related survey work was performed by me or under my direct personal supervision and that I am a duly licensed Land Surveyor under the laws of the State of Iowa.

*Lyle G. TeKippe* 7-25-00  
 Lyle G. TeKippe Date  
 License number 7060  
 My license renewal date is December 31, 2000.  
 Sheets covered by this seal: Individual

List Corners to be Indexed			
Corners	Section	Twp.	Range
W 1/4	23	95N	14W
S 1/4	23	95N	14W

Filed 7-27-00

2000-1291

County Engineer's Copy