

OF

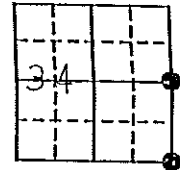
Land Survey Monuments situated in Section 34, Township 95N, Range 17W, of the Fifth Principal Meridian, Chickasaw County, Iowa. Previously recorded in does not apply in County Recorder's Office.

(Show reason for preparing this certificate, the evidence and detailed procedures used in establishing the corner positions and monumentation found or placed.)

Monument Description and Remarks: See below

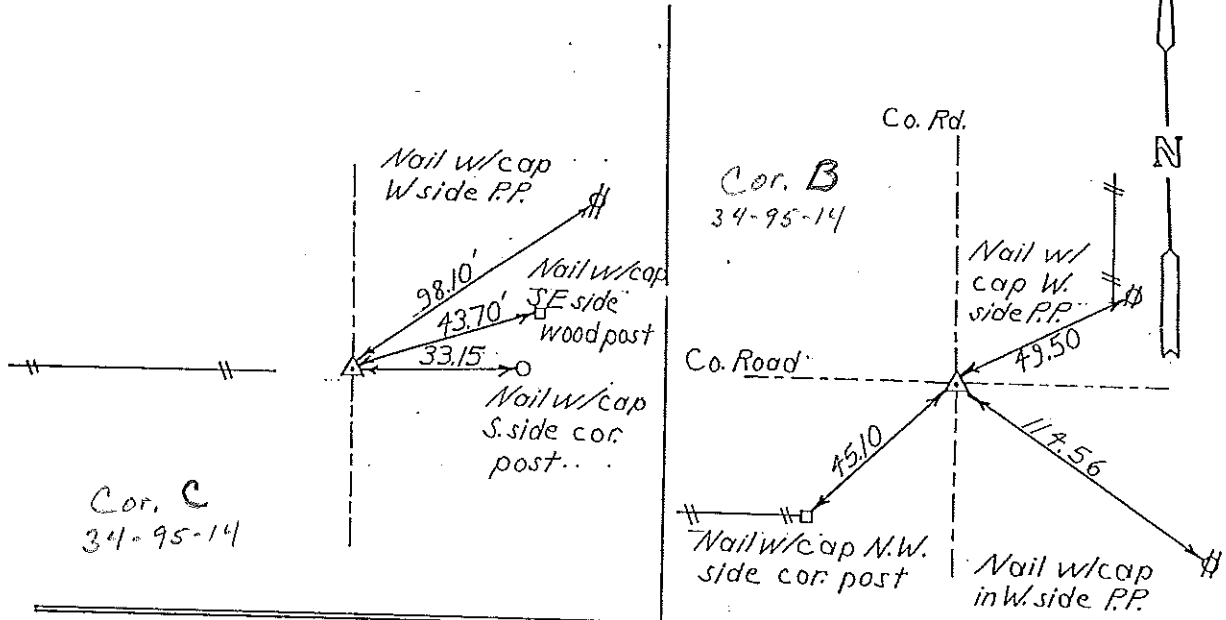
PLAN - VIEW

(Show a minimum of three reference ties to durable physical objects, relevant monuments and physical conditions that will enable recovery of the corner.)



E 1/4 cor. Set 1/2" bar w/cap

SE cor. set 1/2" bar w/cap



I hereby certify that the survey work was completed and this certificate was prepared by me or under my direct personal supervision and that I am a duly registered land surveyor under the laws of the state of Iowa.

Signature: Lindsay Erdman  
Name typed or printed: Lindsay Erdman

Date: 6-1-94 Reg. No. 11442

Corners	List Corners to be Indexed Section	Twp	Range
E 1/4	34	95	17
SE	34	95	17

SEAL



DOCUMENT No. 01166 FILED FOR RECORD THE 6th DAY OF January 1995 AT 9:39 O'CLOCK A.M. BOOK 150 PAGE 462 STATE OF IOWA, CHICKASAW COUNTY. By Leitha N. Ross Recorder. #94025 Voshman Deputy