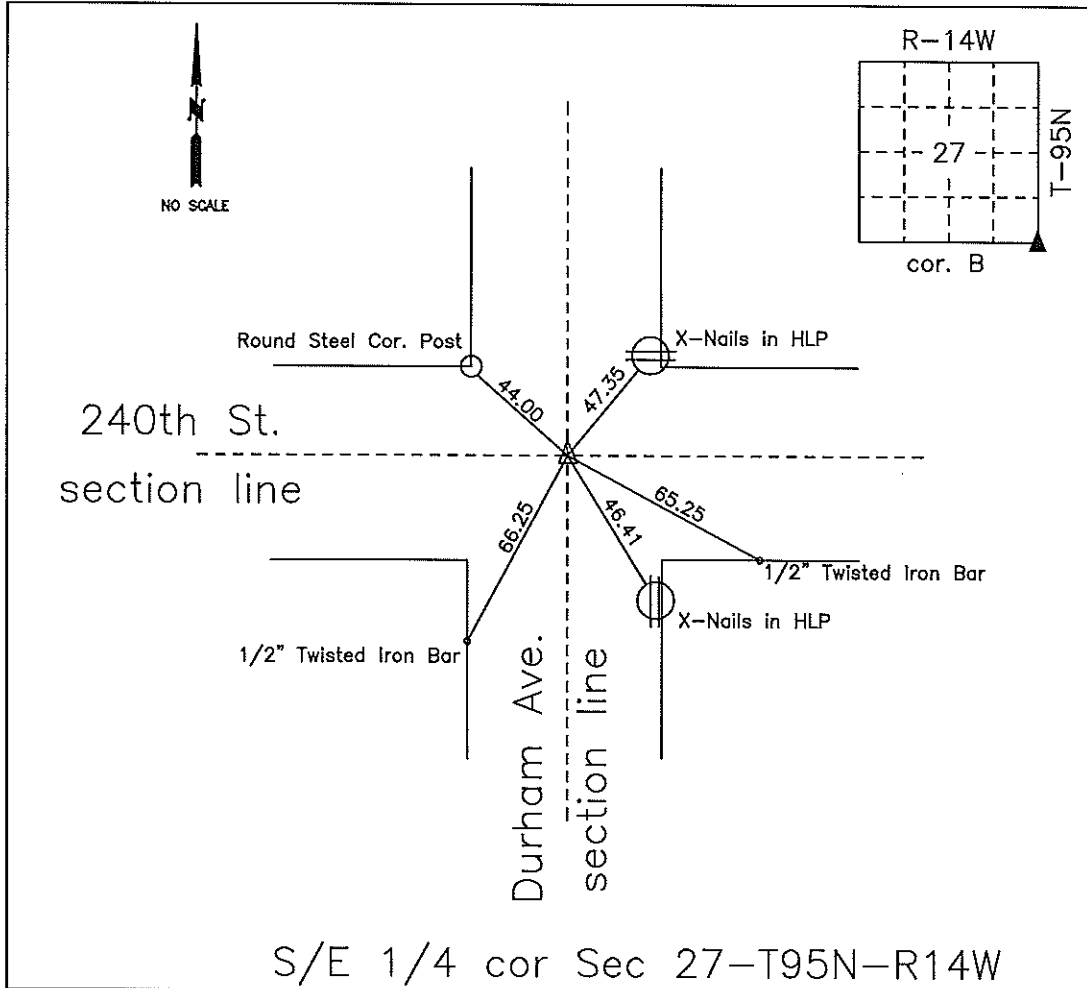


COUNTY ENGINEER'S SECTION CORNER PRESERVATION RECORD

LAND SURVEY MONUMENT LOCATED IN SECTION 27, TOWNSHIP 95 N
NORTH, RANGE 14 W, OF THE 5TH P.M. Chickasaw COUNTY, IOWA
PREVIOUSLY RECORDED 4/30/1991



MONUMENT DESCRIPTION AND NARRATIVE Found 5/8" dia. iron pin in center of intersection.

Set new X-Nails in HLP on NE side of intersection. Unable to locate 1/2" iron pin on NW side of intersection.

Retied using round steel corner post. Retied both 1/2" twisted bars on SW and SE sides of intersection.

I AM NOT A REGISTERED LAND SURVEYOR UNDER THE LAWS OF THE STATE OF IOWA

ROMAN LENSING CHICKASAW CO. DATE: 08/13/2014

UNITED STATES PUBLIC LAND SURVEY CORNER CERTIFICATE

OF 27

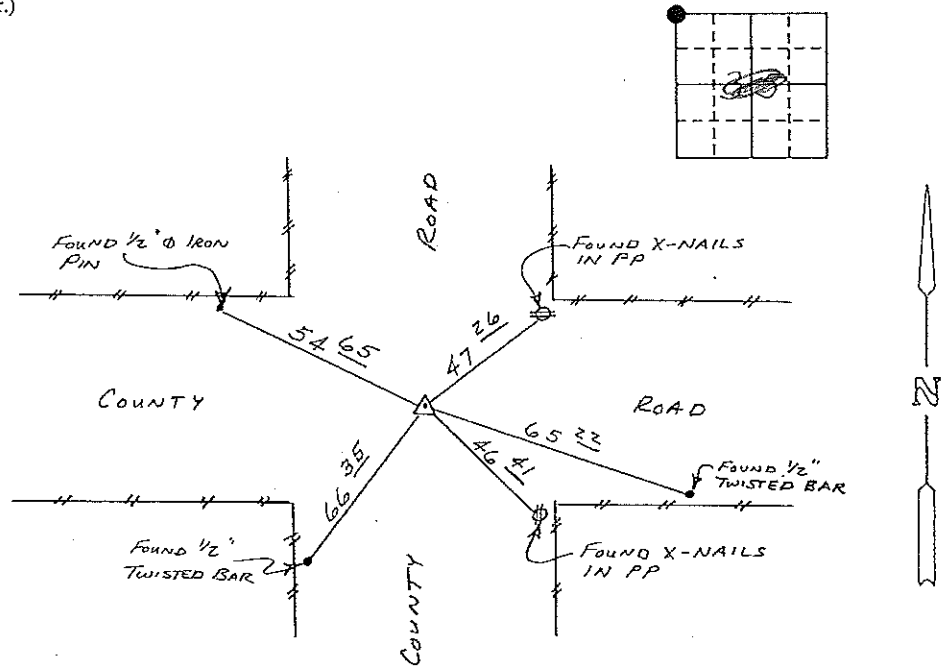
Land Survey Monuments situated in Section 35, Township 95N, Range 14W, of the Fifth Principal Meridian, CHICKASAW County, Iowa: Previously recorded in (NONE) in County Recorder's Office.

(Show reason for preparing this certificate, the evidence and detailed procedures used in establishing the corner positions and monumentation found or placed.)
Monument Description and Remarks: FOUND 5/8" Ø IRON PIN.

PLAN - VIEW

(Show a minimum of three reference ties to durable physical objects, relevant monuments and physical conditions that will enable recovery of the corner.)

Section 27-95-14
As referred to in
Engr. Tie Book



COR B
27-95-14

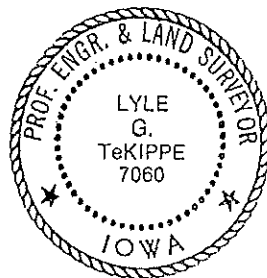
NW CORNER SECTION 35-T95N-R14W

I hereby certify that the survey work was completed and this certificate was prepared by me or under my direct personal supervision and that I am a duly registered land surveyor under the laws of the state of Iowa.

Signature: Lyle G. TeKippe
Name typed or printed: Lyle G. TeKippe
Date: 4-30-91 Reg. No. 7060

Corners	List Corners to be Indexed		
	Section	Twp	Range
NW	35	95N	14W

SEAL



147-135

"County Engineer's Copy"