

# UNITED STATES PUBLIC LAND SURVEY CORNER CERTIFICATE

OF

Land Survey Monuments situated in Section 35<sup>26</sup>, Township 95N, Range 14W, of the Fifth Principal Meridian, CHICKASAW County, Iowa. Previously recorded in (None) in County Recorder's Office.

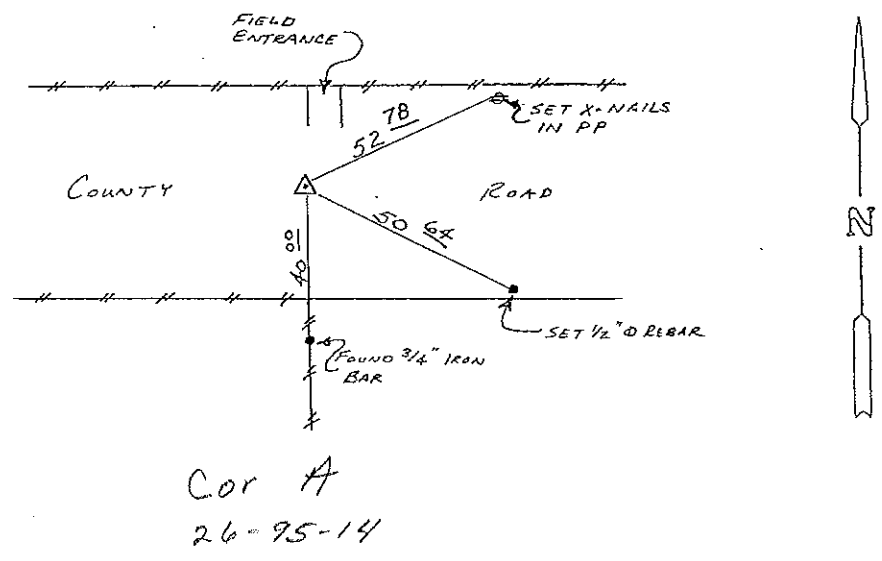
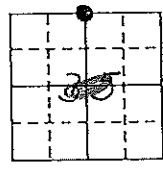
(Show reason for preparing this certificate, the evidence and detailed procedures used in establishing the corner positions and monumentation found or placed.)  
Monument Description and Remarks: SET 1/2" Ø REBAR WITH REG. CAP USING

CHICKASAW COUNTY ENGINEER REFERENCE TIES.

## PLAN - VIEW

(Show a minimum of three reference ties to durable physical objects, relevant monuments and physical conditions that will enable recovery of the corner.)

Section 26-95-14  
As referred to in  
Engr. Tie Book



*Cor A*  
*26-95-14*  
N 1/4 CORNER SECTION 35-T95N-R14W

I hereby certify that the survey work was completed and this certificate was prepared by me or under my direct personal supervision and that I am a duly registered land surveyor under the laws of the state of Iowa.

Signature: Lyle G. TeKippe  
Name typed or printed: Lyle G. TeKippe  
Date: 4-30-91 Reg. No. 7060

Corners	List Corners to be Indexed		
	Section	Twp	Range
N 1/4	35	95N	14W

SEAL

