



Prepared by: Erdman Engineering, P.C., 708 Commerce Drive, P.O. Box 246, Decorah, Iowa, (563)382-4194

UNITED STATES PUBLIC LAND SURVEY CORNER CERTIFICATE
 OF

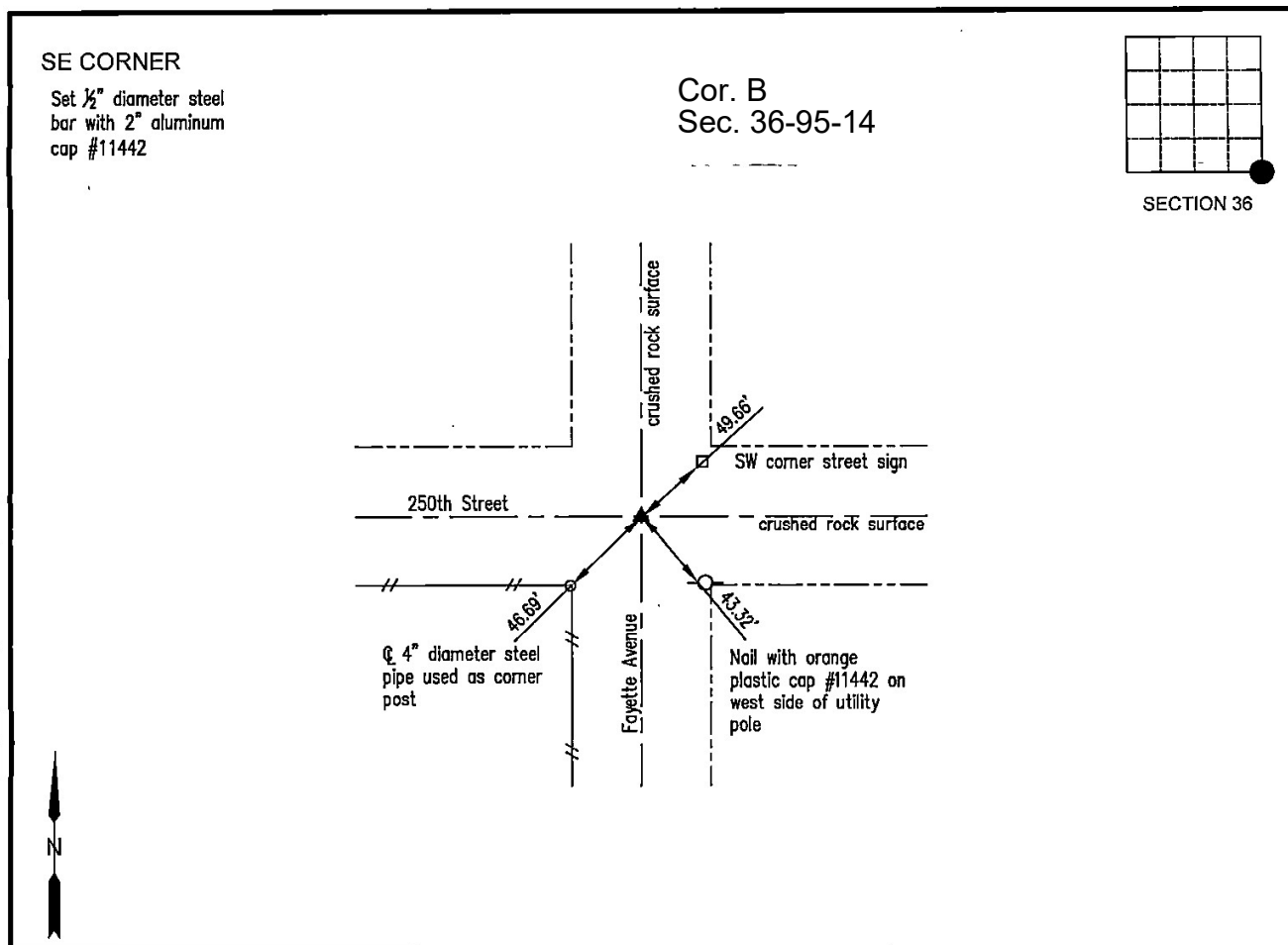
Land Survey Monuments situated in Section 36, Township 95 North, Range 14 West, of
 the Fifth Principal Meridian, Chickasaw County, Iowa, Previously recorded in does not apply in the
 County Recorder's Office.

Monument Description and Remarks:

This certificate is prepared in accordance with Section 355.11 of the Code of Iowa. No previous certificates have been filed for these corner locations.

SE Corner: Chickasaw County Engineer's Reference Ties show that a gas pipe was found in 1935 at the SE Corner of Section 36. We searched for the tie markers that had been set previously. We did not find any as they appear to have been removed. We made a magnetic locator search of a ±25' diameter area near the approximate centerline-centerline intersection of the county roads. We did not find a monument as it appears to have been removed. We set a ½" diameter steel bar with 2" aluminum cap #11442 33' north of the south right-of-way line of 250th Street and 33' east of the west right-of-way line of Fayette Avenue as the SE Corner of Section 36, Township 95 North, Range 14 West. The monument location is at the approximate centerline-centerline intersection of the county roads.

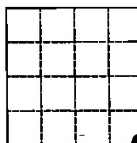
PLAN-VIEW
 (NOT TO SCALE)



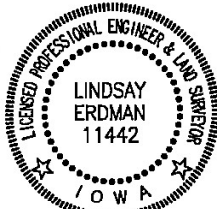
SE CORNER

Set ½" diameter steel
 bar with 2" aluminum
 cap #11442

Cor. B
 Sec. 36-95-14



SECTION 36



I hereby certify that this land surveying document was prepared and the related survey work was performed by me or under my direct personal supervision and that I am a duly licensed Land Surveyor under the laws of the State of Iowa.

Lindsay Erdman 2/1/24
 Date

Lindsay Erdman, P.E. & P.L.S.
 Licensed Professional Land Surveyor
 Iowa License Number 11442
 My License renewal date is December 31, 2024
 Pages or sheets covered by this seal: THIS SHEET ONLY

List Corner(s) to be Indexed

Corner(s)	Section	Township	Range
SE	36	95N	14W

ERDMAN
ENGINEERING, P.C.
 CIVIL ENGINEERING & LAND SURVEYING
 Decorah, Iowa