

**UNITED STATES PUBLIC LAND  
SURVEY CORNER CERTIFICATE OF**

Land Survey Monuments situated in Section 3,  
Township 95N, Range 14W of the 5th Principal Meridian,  
Chickasaw County, Iowa.  
Previously recorded in Book (Drawer) N/A, Page  
(Document) N/A, in association with a survey for:  
Karen Weqner

Chickasaw Co. Recorder  
Cindy Messersmith  
**Fee Book 2017-0568**  
04/24/2017 @1005AM  
SCC SEC COR CERT  
Book: Page: # Pages: 1  
Total Fees: \$7.00

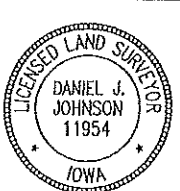
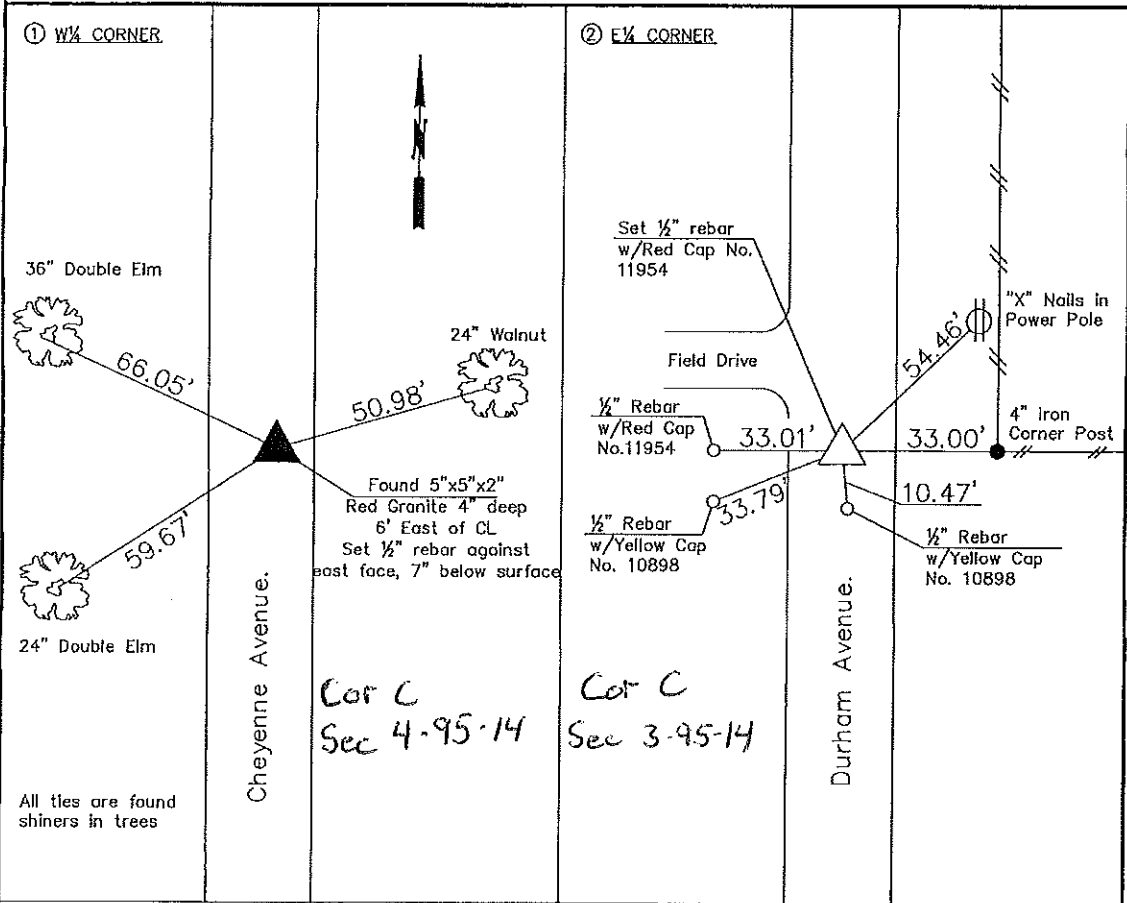
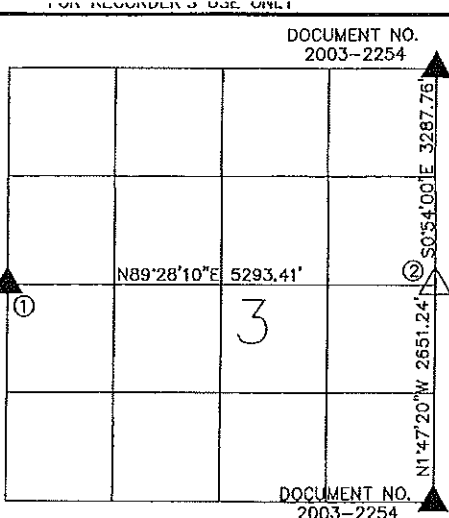
Reason for preparing Certificate:

- There is no Certificate for the corner on file with the County Recorder.
- Corner position differs from that previously recorded.
- The corner monument has been replaced or modified.
- The existing Certificate reference ties are incorrect or changed.

Monument Description and Remarks:

①  $\frac{1}{4}$ " CORNER - Found 5" x 5" x 2" Red Granite, position matches existing occupation. Set  $\frac{1}{2}$ " rebar against east face of stone.

②  $\frac{1}{4}$ " Corner - Set  $\frac{1}{2}$ " rebar w/Red Cap No. 11954 from County Engineer's ties.



Certification:  
I hereby certify that this land surveying document was prepared and the related survey work was performed by me or under my direct personal supervision and that I am a duly licensed Land Surveyor under the laws of the State of Iowa  
*Daniel J. Johnson* Date 4-21-17  
Daniel J. Johnson License number 11954  
My current license renewal date is December 31, 2018

**JOHNSON LAND SURVEYING**  
3703 165th Street, Blue Grass, IA 52726  
Ph: (563) 506-9954

Corner Certificate Prepared By:  
Daniel J. Johnson, L.S. #11954

FILED 2003-2254  
 RECORDER'S OFFICE  
 CHICKASAW COUNTY, IOWA  
 2003 JUL 18 AM 9 00  
 CINDY MESSERSMITH  
 COUNTY RECORDER

PREPARED BY KENNETH D. STARK 1622 SOUTH TAFT AVENUE, MASON CITY, IOWA, 50401 641-423-7947

UNITED STATES PUBLIC LAND SURVEY CORNER CERTIFICATE

NA OF

Land Survey Monuments situated in Section 3, Township 95N, Range 14W  
 of the Fifth Principal Meridian, CHICKASAW County, Iowa.

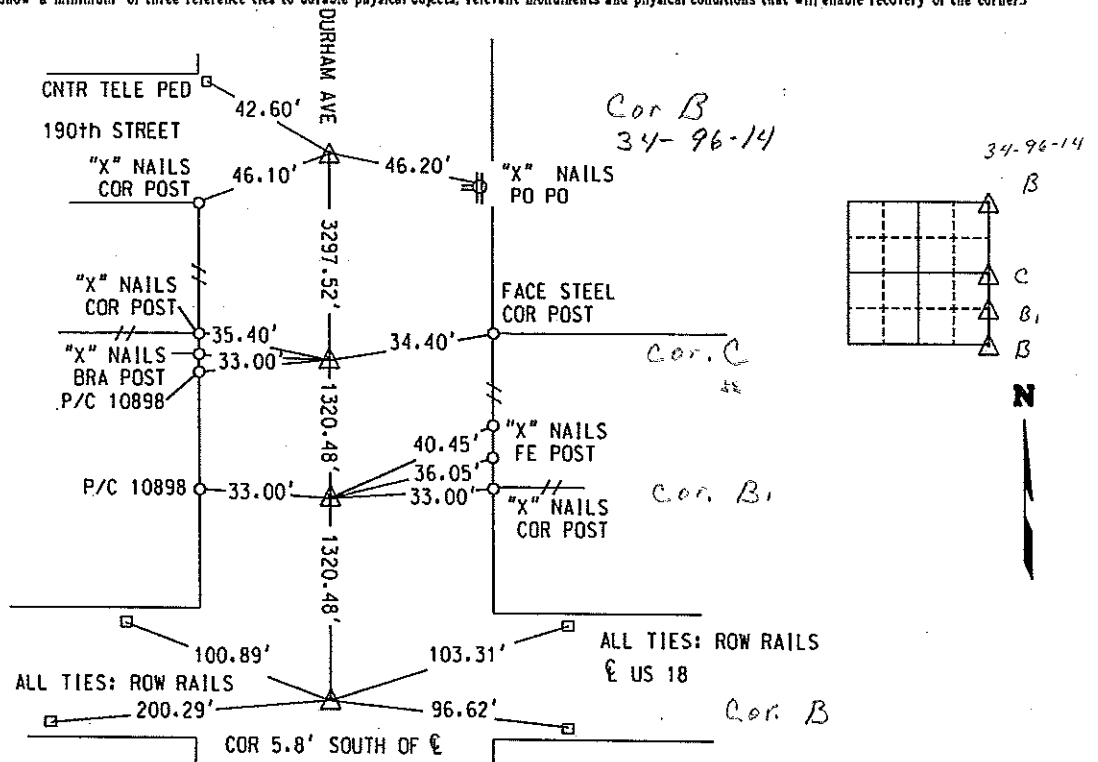
Previously recorded in NA in County Recorder's Office.  
(book, page, document number, etc.)

(Show reason for preparing this certificate, the evidence and detailed procedures used in establishing the corner positions and monumentation found or placed.)

Monument Description and Remarks:

- NE COR = FOUND PIN INSIDE PIPE
- E<sup>1</sup>/<sub>4</sub> COR = SET PIN CAP PROPORTIONATELY DISTANCED FROM SE COR TO NE COR AND SPLIT DISTANCE BETWEEN CORNER POSTS FOR LINE
- NE COR SE<sup>1</sup>/<sub>4</sub> SE<sup>1</sup>/<sub>4</sub> = SET PIN/CAP MID POINT ON LINE BETWEEN SE COR & E<sup>1</sup>/<sub>4</sub> COR
- SE COR = FOUND ALUMINUM DISK FROM DOT TIES

Show a minimum of three reference ties to durable physical objects, relevant monuments and physical conditions that will enable recovery of the corner.



**LICENSED LAND SURVEYOR**  
 KENNETH D. STARK  
 10898  
 IOWA

I hereby certify that this land surveying document was prepared and the related survey work was performed by me or under my personal supervision and that I am a duly licensed Land Surveyor under the laws of the state of Iowa.  
 Kenneth D. Stark Date 07-15-03  
 License number 10898  
 My license renewal date is December 31, 2003  
 Pages or sheets covered by this sect. 1

List Corners to be Indexed			
Corner	Section	Township	Range
NE	3	95	14
E <sup>1</sup> / <sub>4</sub>	3	95	14
NE COR			
SE <sup>1</sup> / <sub>4</sub> SE <sup>1</sup> / <sub>4</sub>	3	95	14
SE	3	95	14

Filed 8-15-03