

2006-235/
11/15/2006

Section 34-96-14
As referred to in
Eng. T.C. Book

TeKIPPE ENGINEERING, P.C., 128 South Vine Street, West Union, Iowa 52175 Phone (563) 422-5131

UNITED STATES PUBLIC LAND SURVEY CORNER CERTIFICATE

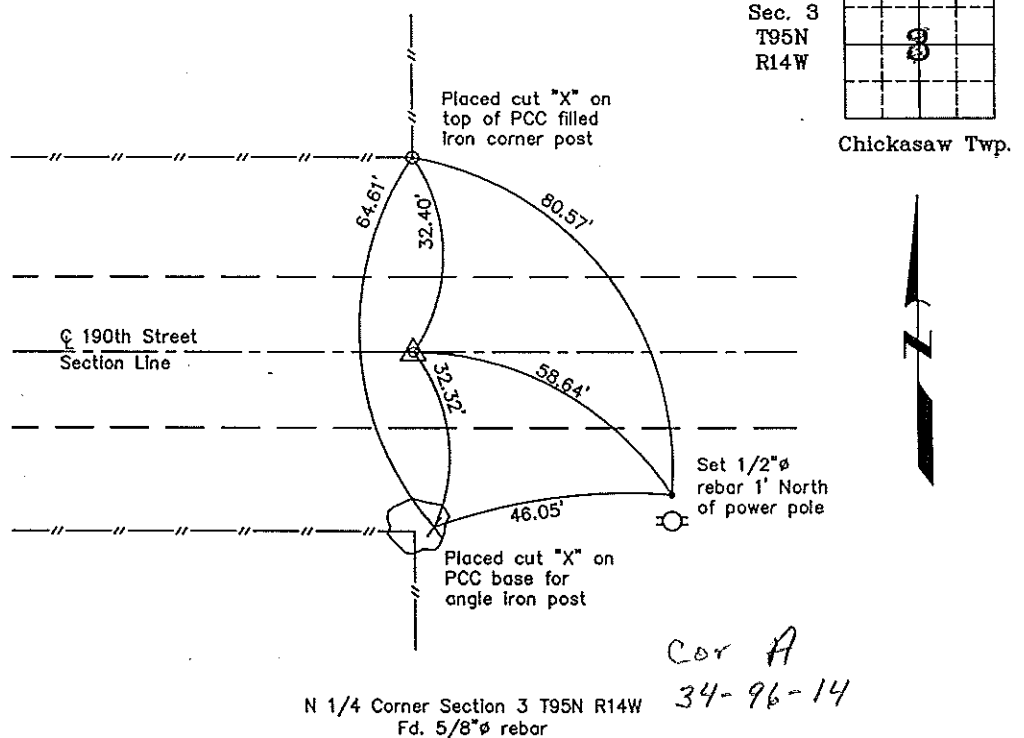
Land Survey Monuments situated in Section 34 , Township 96 North, Range 14 West of the Fifth Principal Meridian, Chickasaw County, Iowa.
Previously recorded in none in County Recorder's Office.
(book, page, document number, etc.)

(Show reason for preparing this certificate, the evidence and detailed procedures used in establishing the corner positions and monumentation found or placed.)

Monument Description and Remarks: N 1/4 Corner Section 3 T95N R14W: Found 5/8"φ rebar with information obtained from the County Engineer's office, Deerfield Section Ties, Section 34, Corner "A".

PLAN - VIEW

(Show a minimum of three reference ties to durable physical objects, relevant monuments and physical conditions that will enable recovery of the corner.)



I hereby certify that this land surveying document was prepared and the related survey work was performed by me or under my direct personal supervision and that I am a duly licensed Land Surveyor under the laws of the State of Iowa.
Michael J. Shimak November 14, 2006
Michael Shimak Date
License number 16961
My license renewal date is December 31, 2007.
Sheets covered by this seal: Individual

List Corners to be Indexed			
Corners	Section	Twp.	Range
N 1/4	3	95N	14W

Project Number 06307.LS
FD. 46M. PGS. 27-28
X:\Section Corners\Sec. 0313-95-14c.dwg