

Section 5-95-14
 As referred to in
 Engr. Tic Book

FILED 2002 - 1456
 RECORDER'S OFFICE
 CHICKASAW COUNTY, IOWA
 2002 JUN 7 AM 9 05
 CINDY MESSERSMITH
 COUNTY RECORDER

TeKIPPE ENGINEERING, P.C., 128 South Vine Street, West Union, Iowa 52175 Phone (563) 422-5131

UNITED STATES PUBLIC LAND SURVEY CORNER CERTIFICATE

OF ⁵
 Land Survey Monuments situated in Section 4, Township 95 North, Range 14 West of the Fifth Principal Meridian, CHICKASAW County, Iowa.
 Previously recorded in none in County Recorder's Office.
(book, page, document number, etc.)

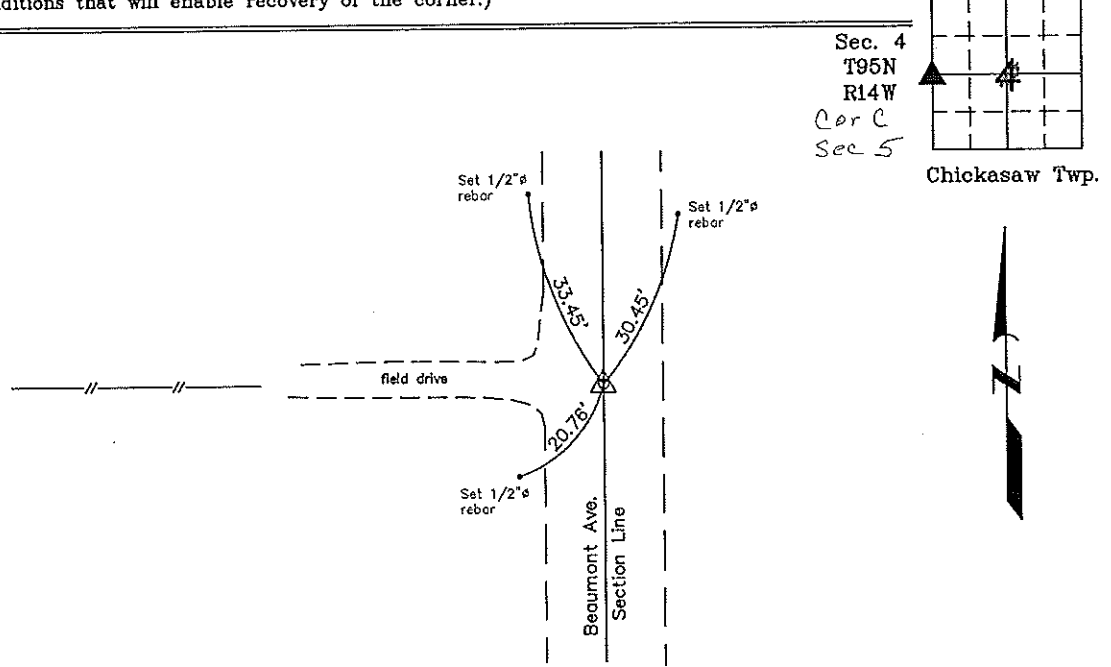
(Show reason for preparing this certificate, the evidence and detailed procedures used in establishing the corner positions and monumentation found or placed.)

Monument Description and Remarks: W 1/4 Corner Section 4 T95N R14W: Found 5/8"Ø rebar, 8" deep, with information obtained from a Survey and Plat made by Terry VanLaningham recorded in the Chickasaw County Recorder's Office January 20, 1995 in Deeds Book 157, Pages 10-11, and from information obtained from the County Engineers office in Field Book, Chickasaw Twp. Corner Ties, Corner C, Section 5.

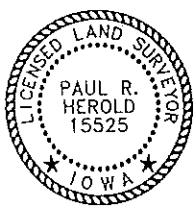
PLAN - VIEW

Project Number 02121.LS
 FB. 46J PG. 17-19

(Show a minimum of three reference ties to durable physical objects, relevant monuments and physical conditions that will enable recovery of the corner.)



Cor. C
 Sec. 5-95-14
 W 1/4 Corner Section 4 T95N R14W
 Found 5/8"Ø rebar, 8" deep



I hereby certify that this land surveying document was prepared and the related survey work was performed by me or under my direct personal supervision and that I am a duly licensed Land Surveyor under the laws of the State of Iowa.
Paul R. Herold 6-6-02
 Paul R. Herold Date
 License number 15525
 My license renewal date is December 31, 2002.
 Sheets covered by this seal: Individual

List Corners to be Indexed			
Corners	Section	Twp.	Range
W 1/4	4	95N	14W

X:\Section Corners\Sec. 04\49514k.dwg

County Engineers Copy