

Prepared by & Return to: Herold - Reicks Surveying, 10 East Main Street, New Hampton, IA 50659, Ph. 641-394-2725

UNITED STATES PUBLIC LAND SURVEY CORNER CERTIFICATE

Land Survey Monuments situated in Section 5, Township 95 North, Range 14 West of the Fifth Principal Meridian, Chickasaw County, Iowa. Previously not recorded in the County Recorder's office.

This certificate is being prepared in compliance with Iowa Code Chapter 355.11 because:

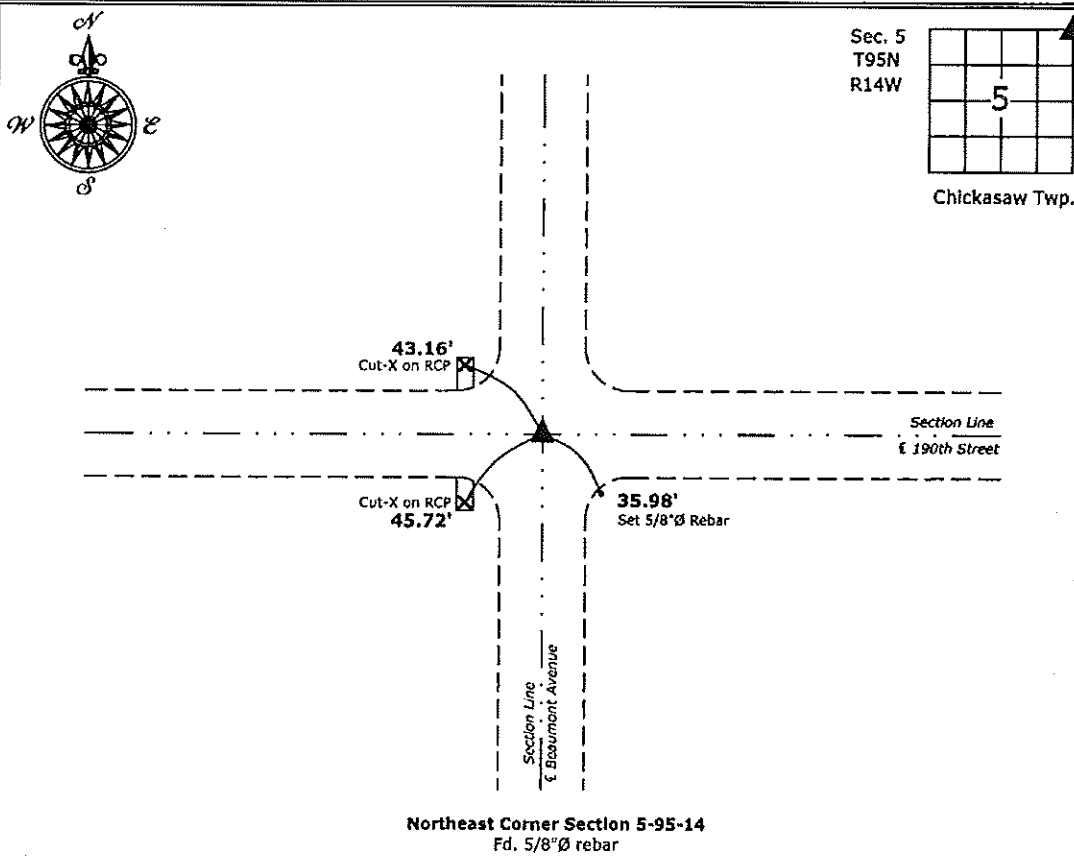
- There is no certificate on file for this corner.
- There are no longer three valid ties of record.
- There are changes to reference ties of record.
- There is change of monumentation of record.
- To clarify description of record monument (ties).

Monument Description and Remarks:

Northeast Corner: Found 5/8"Ø rebar with information obtained from a Survey and Plat made by Terry VanLaningham, recorded on March 4, 2011 as Document #2011-0353 on file in the Chickasaw County Recorder's office.

PLAN - VIEW

(Show a minimum of three reference ties to durable physical objects, relevant monuments and physical conditions that will enable recovery of the corner.)



Northeast Corner Section 5-95-14
 Fd. 5/8"Ø rebar



I hereby certify that this land surveying document was prepared and the related survey work was performed by me or under my direct personal supervision and that I am a duly licensed Land Surveyor under the laws of the State of Iowa.

Kirk D. Reicks 8-6-14
 Kirk D. Reicks Date:
 License number 19211
 My license renewal date is December 31, 2014.
 Sheets covered by this seal: Individual sheet only

List Corners to be Indexed			
Corners	Section	Twp.	Range
NE	5	95	14
Project Number: 2014-116			
FB: Chickasaw 6, Pgs. 43-44			

UNITED STATES PUBLIC LAND SURVEY CORNER CERTIFICATE

SECTION 8⁵, TOWNSHIP 95, RANGE 14 OF THE 5TH. P.M.
 IN CHICKASAW COUNTY, IOWA

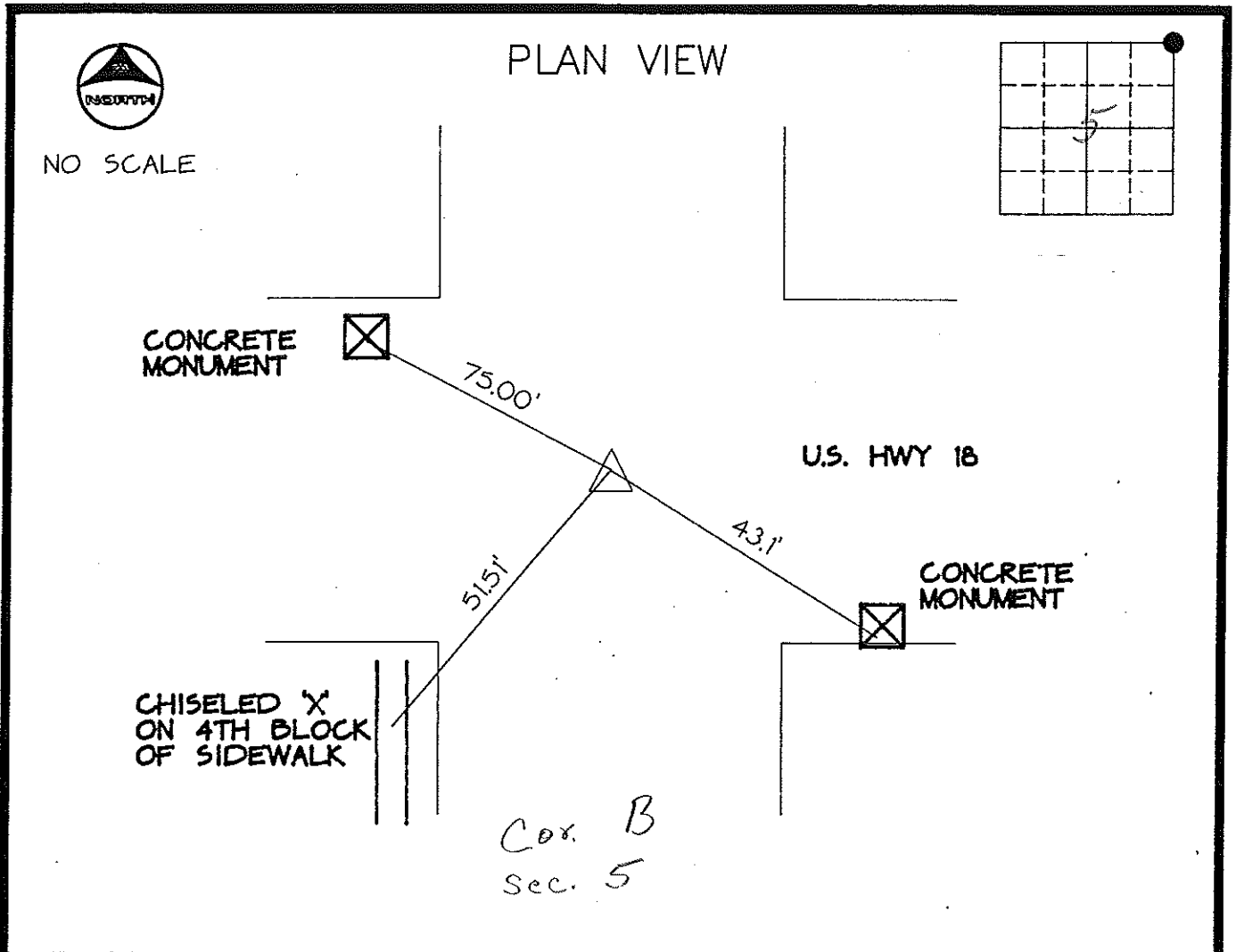
CORNER: NE COR NE1/4

DESCRIPTION AND REMARKS: *Found* ALUMINUM MONUMENT
 CENTERLINE HWY 18

*Place in tie Book
 4/91 JFM*

*Section 5-95-14
 As referred to in
 Eng. Tie Book*

PREVIOUSLY RECORDED IN BOOK _____, PAGE _____



CERTIFICATION:
 I HEREBY CERTIFY THAT THIS MAP, PLAT, OR SURVEY WAS MADE BY ME OR UNDER MY DIRECT PERSONAL SUPERVISION AND THAT I AM A DULY REGISTERED LAND SURVEYOR UNDER THE LAWS OF THE STATE OF IOWA.

Thomas V. Craft
 THOMAS V. CRAFT REG. L.S. NO. 7549 DATE: *4/17/91*

MCN/213840



INDEXING ALTERNATIVES

CORNER	SECTION	TWP	RANGE
SE	5	95	14
SW	4	95	14
NW	9	95	14

147-115