

Prepared by & Return to: Herold - Reicks Surveying, 10 East Main Street, New Hampton, IA 50659, Ph. 641-394-2725

United States Public Land Survey Corner Certificate

Land Survey Monument situated in
 Section 6, Township 95 North, Range 14 West of the Fifth Principal Meridian, Chickasaw County, Iowa.
 On file in Document #2016-0905 in the County Recorder's office.

This certificate is being prepared in compliance with Iowa Code Chapter 355.11 because:

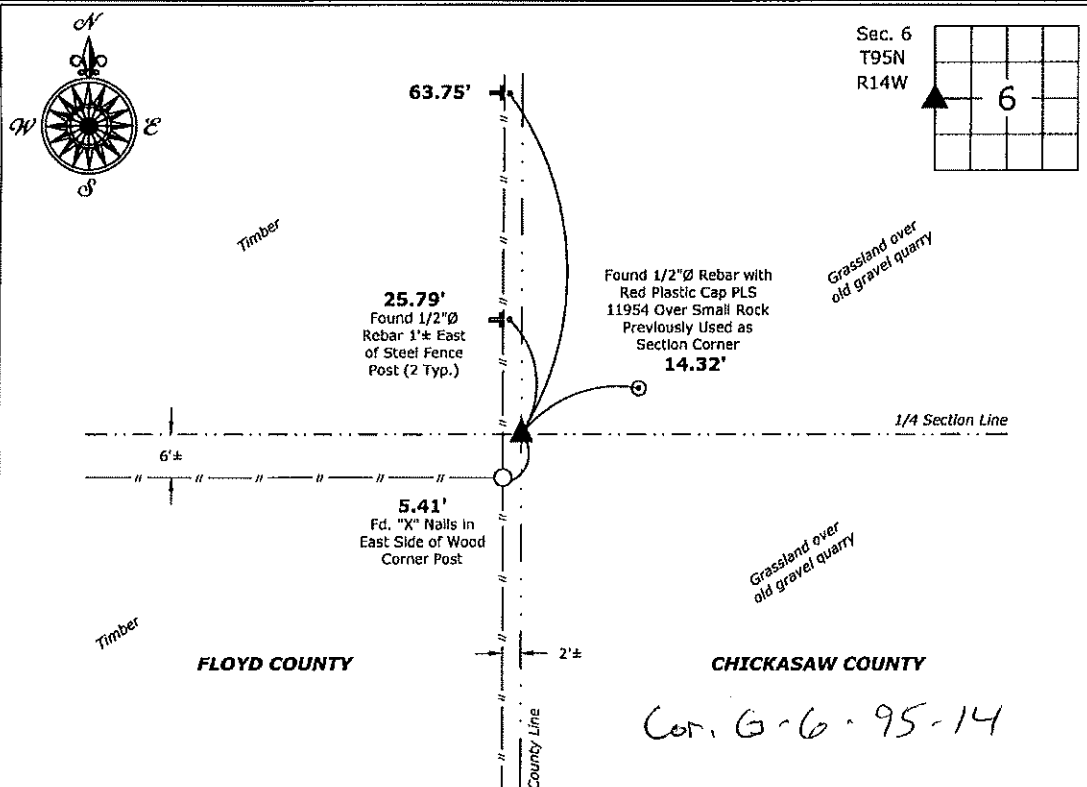
- There is no certificate on file for this corner.
- There are no longer three valid ties of record.
- There are changes to reference ties of record.
- There is change of monumentation of record.
- To clarify description of record monument (ties).

Monument Description and Remarks:

West 1/4 Corner: Previous Section Corner Monument and associated Certificate does not match local field evidence or existing County records. Chickasaw County Engineer's ties make reference to Corner "G" (West 1/4 Corner). This record indicates Found Stone, Set #5 rebar 0.15' North of High point of Stone, 6' North of Fence, Consulting Engineer 6-1981. A Survey was performed in Floyd County in Section 1, T95N-R15W by Dan Johnson, Recorded as Doc. #2018-0934. This survey indicated that a stone was found with a disturbed 5/8"Ø Rebar over the stone. However, in the process of locating said stone, I staked the reference tie set by Paul R. Herold in 2016. The position of Herold's reference tie was within 1.3' of the stone located by Johnson. It appears that Johnson assumed Herold's reference tie to be the original tie from 1981. I excavated the stone accepted by Johnson and found that the stone is native to the area and basically a field rock. I did not accept the rock located by Johnson. I perused to locate the stone per Chickasaw County Engineer's records. Established a straight line from the West 1/4 Corner of 1-95-15 through and across the Center of Section 1-95-15 and staked a straight mile. Probed 4' deep in a 10' square grid pattern on the straight mile line and found a 3"x7"x9" Rectangular Pointed Blue Granite Stone on End, 12" Deep, approximately 6' North of an ancient Fence. Accepted this stone and set a 5/8"Ø Rebar w/2"Ø Aluminum Cap PLS 19211 0.22' East of Stone for magnetic detection.

Plan View

(Show a minimum of three reference ties to durable physical objects, relevant monuments and physical conditions that will enable recovery of the corner.)



West 1/4 Corner of Section 6-95-14

Found 3"x7"x9" Rectangular Pointed Blue Granite Stone on End, 12" Deep
 Set 5/8"Ø Rebar w/2"Ø Alum. Cap 19211 0.22' East of Stone for magnetic detection



I hereby certify that this land surveying document was prepared and the related survey work was performed by me or under my direct personal supervision and that I am a duly licensed Land Surveyor under the laws of the State of Iowa.
Kirk D. Reicks 6-26-19
 Kirk D. Reicks Date:
 License number 19211
 My license renewal date is December 31, 2020.
 Sheets covered by this seal: Individual sheet only

List Corner to be Indexed			
Corner	Section	Twp.	Range
W 1/4	6	95	14
Project Number: 2019-033			
FB: Chickasaw 9, Pgs. 42-43			

File: S:\Projects - NHO\County Control Systems - NHO\CHICKASAW\CHICK-25\dwg, 6/26/2019 10:21:23 AM

Prepared by & Return to: Herold - Reicks Surveying, 10 East Main Street, New Hampton, IA 50659, Ph. 641-394-2725

UNITED STATES PUBLIC LAND SURVEY CORNER CERTIFICATE

Land Survey Monuments situated in Section **6**, Township **95** North, Range **14** West of the Fifth Principal Meridian, **Chickasaw** County, Iowa. Not previously recorded in the County Recorder's office.

This certificate is being prepared in compliance with Iowa Code Chapter 355.11 because:

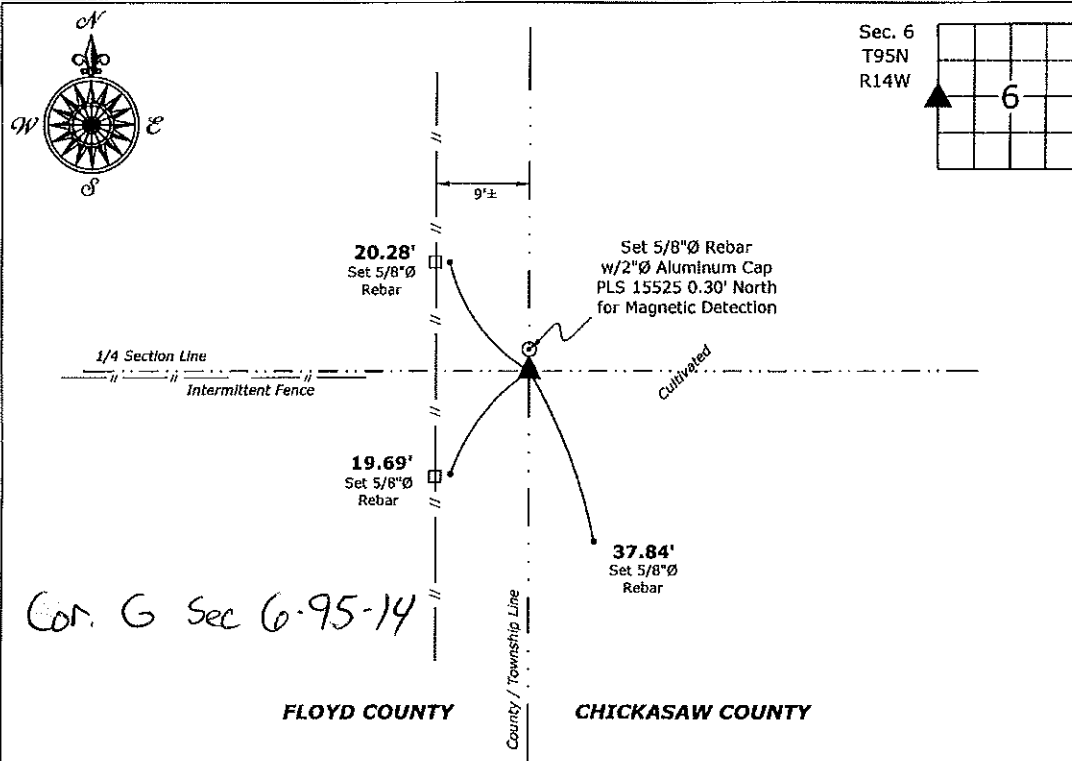
- There is no certificate on file for this corner.
- There are no longer three valid ties of record.
- There are changes to reference ties of record.
- There is change of monumentation of record.
- To clarify description of record monument (ties).

Monument Description and Remarks:

W 1/4 Corner: Fd. 7" X 9" Granite Stone, set 5/8"Ø Rebar w/2"Ø Alum. Cap PLS 15525 0.30' North of Stone for magnetic detection, Corner recovered from information obtained from the Chickasaw County Engineer's Office in Field Book Chickasaw Township Corner Ties, Corner "G"

PLAN - VIEW

(Show a minimum of three reference ties to durable physical objects, relevant monuments and physical conditions that will enable recovery of the corner.)



Cor. G Sec 6-95-14

FLOYD COUNTY

CHICKASAW COUNTY

W 1/4 Corner Section 6-95-14

Fd. 7" X 9" Granite Stone

Set 5/8"Ø Rebar w/2"Ø Aluminum Cap PLS 15525, 0.30' North of Stone for Magnetic Detection



I hereby certify that this land surveying document was prepared and the related survey work was performed by me or under my direct personal supervision and that I am a duly licensed Land Surveyor under the laws of the State of Iowa.

Paul R. Herold 7-12-16
 Paul R. Herold Date:

License number 15525
 My license renewal date is December 31, 2016.
 Sheets covered by this seal: Individual sheet only

List Corners to be Indexed

Corners	Section	Twp.	Range
W 1/4	6	95	14

Project Number: 2016-061

FB: Chickasaw County 3, Pgs. 36-38