

Section 6-95-14  
 As referred to in  
 Eng. Tie Book

FILED 2005-0317  
 RECORDER'S OFFICE  
 CHICKASAW COUNTY, IOWA  
*Fee \$7.00*  
 2005 FEB 24 AM 9 14  
 CINDY MESSERSMITH  
 COUNTY RECORDER

PREPARED BY KENNETH D. STARK STARK SURVEYING 1622 So. Tall Ave. MADON CITY, IOWA 50401 641-423-7917

UNITED STATES PUBLIC LAND SURVEY CORNER CERTIFICATE

OF

Land Survey Monuments situated in Section 56, Township 95N, Range 14W  
 of the Fifth Principal Meridian, CHICKASAW County, Iowa.

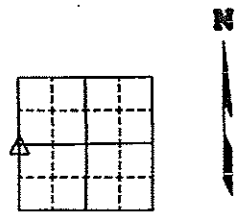
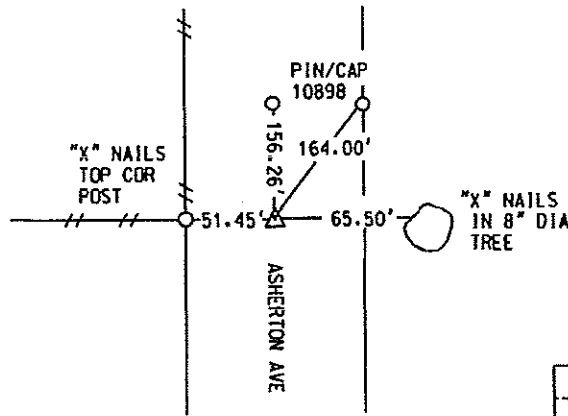
Previously recorded in NA in County Recorder's Office.  
(book, page, document number, etc.)

(Show reason for preparing this certificate, the evidence and detailed procedures used in establishing the corner positions and monumentation found or placed.)

Monument Description and Remarks: \_\_\_\_\_

W 1/4 COR = FOUND IRON PIN FROM DOT TIES

Show a minimum of three reference ties to durable physical objects, relevant monuments and physical conditions that will enable recovery of the corner.



Cor. C  
 sec 6-95-14

LICENSED LAND SURVEYOR  
 KENNETH D. STARK  
 10898  
 IOWA

I hereby certify that this land surveying document was prepared by me or under my personal supervision and that I am a duly Licensed Land Surveyor under the laws of the state of Iowa.  
*Kenneth D. Stark* Date 02-22-05  
 Kenneth D. Stark  
 License number 10898  
 My license renewal date is December 31, 2005 /  
 Pages or sheets covered by this doc. \_\_\_\_\_

List Corners to be Indexed			
Corner	Section	Township	Range
W 1/4	5	95	14