

2004 NOV 8 AM 9 05

CINDY MESSERSMITH
 COUNTY RECORDER

PREPARED BY KENNETH D. STARK 1622 SOUTH TAFT AVENUE, MASON CITY, IOWA, 50401 641-423-7847

UNITED STATES PUBLIC LAND SURVEY CORNER CERTIFICATE
 NA OF

Land Survey Monuments situated in Section 6, Township 95N, Range 14W
 of the Fifth Principal Meridian, CHICKASAW County, Iowa.

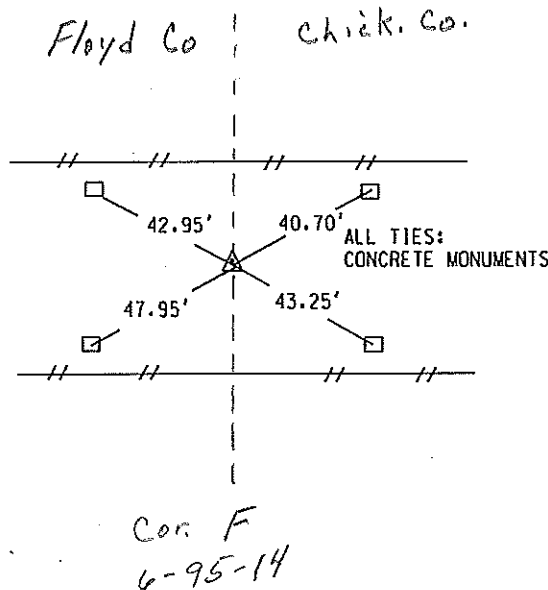
Previously recorded in NA in County Recorder's Office.
(book, page, document number, etc.)

(Show reason for preparing this certificate, the evidence and detailed procedures used in establishing the corner positions and monumentation found or placed.)

Monument Description and Remarks: _____

 NW COR = FOUND PIPE PER COUNTY TIES

(Show a minimum of three reference ties to durable physical objects, relevant monuments and physical conditions that will enable recovery of the corner.)



List Corners to be Indexed			
Corner	Section	Township	Range
NW COR	6	95	14

	I hereby certify that this land surveying document was prepared and the related survey work was performed by me or under my personal supervision and that I am a duly licensed Land Surveyor under the laws of the state of Iowa. <i>Kenneth D. Stark</i> 11/05/04 Kenneth D. Stark Date License number 10898 My License renewal date is December 31, 2005 Pages or sheets covered by this seal: <u>1</u>