

Herold - Reicks Surveying, 25 1/2 East Main Street, Suite 204, New Hampton, IA 50759, Ph. 741-394-2125

UNITED STATES PUBLIC LAND SURVEY CORNER CERTIFICATE

Land Survey Monuments situated in Section 7, Township 95 North, Range 14 West of the Fifth Principal Meridian, Chickasaw County, Iowa. Previously not recorded in the County Recorder's office.

This certificate is being prepared in compliance with Iowa Code Chapter 355.11 because:

- There are no certificates on file for these corners.
- There are no longer three valid ties of record.
- There are changes to reference ties of record.
- There is change of monumentation of record.
- To clarify description of record monument (ties).

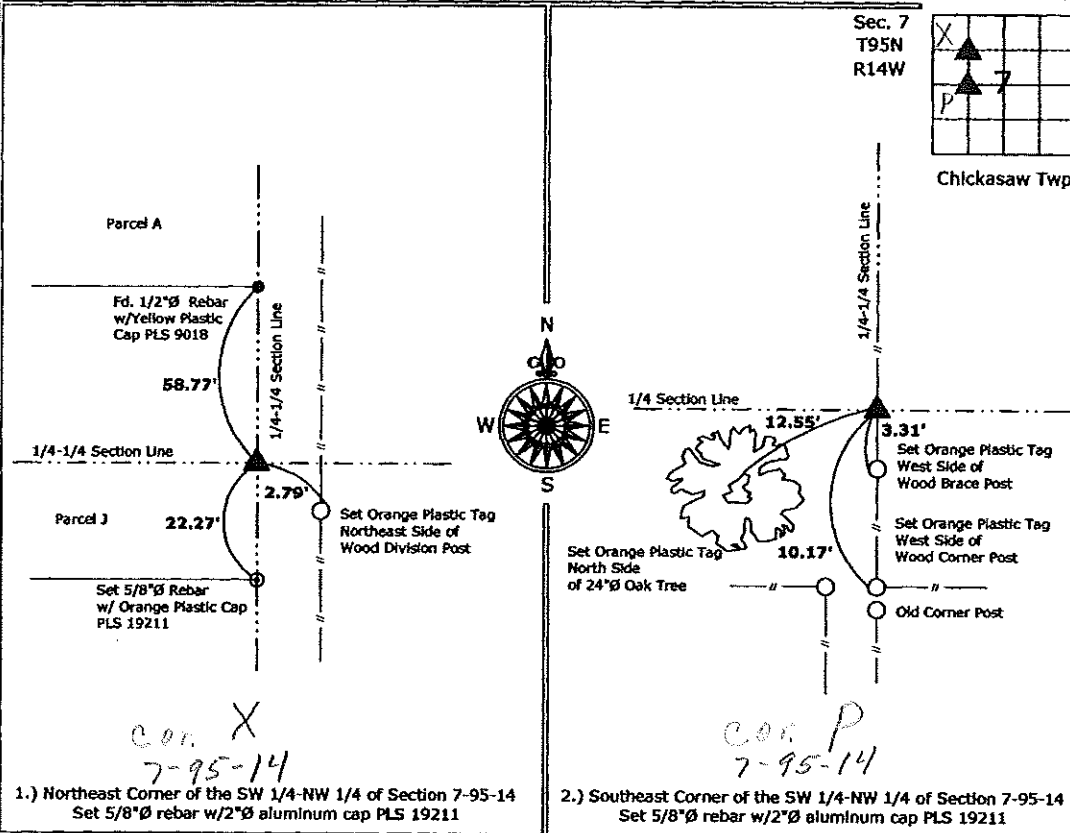
Monument Description and Remarks:

1.) **Northeast Corner of the SW 1/4-NW 1/4:** Set 5/8"Ø rebar w/ 2"Ø aluminum cap PLS 19211 at the Southerly extension of the East Line of Parcel "A" and the West Line of Parcel "I" in the NW 1/4 intersecting the East-West Quarter-Quarter Section Line, utilizing the previously monumented 1/4-1/4 Section lines.

2.) **Southeast Corner of the SW 1/4-NW 1/4:** Set 5/8"Ø rebar w/ 2"Ø aluminum cap PLS 19211 at the intersection of the East-West 1/4 Section Line and a possession line fence.

PLAN - VIEW

(Show a minimum of three reference ties to durable physical objects, relevant monuments and physical conditions that will enable recovery of the corner.)



1.) Northeast Corner of the SW 1/4-NW 1/4 of Section 7-95-14
 Set 5/8"Ø rebar w/2"Ø aluminum cap PLS 19211

2.) Southeast Corner of the SW 1/4-NW 1/4 of Section 7-95-14
 Set 5/8"Ø rebar w/2"Ø aluminum cap PLS 19211



I hereby certify that this land surveying document was prepared and the related survey work was performed by me or under my direct personal supervision and that I am a duly licensed Land Surveyor under the laws of the State of Iowa.

Kirk D. Reicks 9-9-09
 Kirk D. Reicks Date:

License number 19211
 My license renewal date is December 31, 2010.
 Sheets covered by this seal: Individual sheet only

List Corners to be Indexed			
Corners	Section	Twp.	Range
NE-SW-NW	7	95	14
SE-SW-NW	7	95	14

Project Number: 2009-102

FB: Chickasaw County 1, Pgs. 41,43