

Chickasaw Co. Recorder
 Cindy Messersmith
Fee Book 2008-0047
 01/08/2008 80841AM
 SCC SEC COR CERT
 Book: Page: # Pages: 1
 Total Fees: \$7.00

Section 7-95-14
 As referred to in
 Engr. Tie Book

UNITED STATES PUBLIC LAND SURVEY CORNER CERTIFICATE

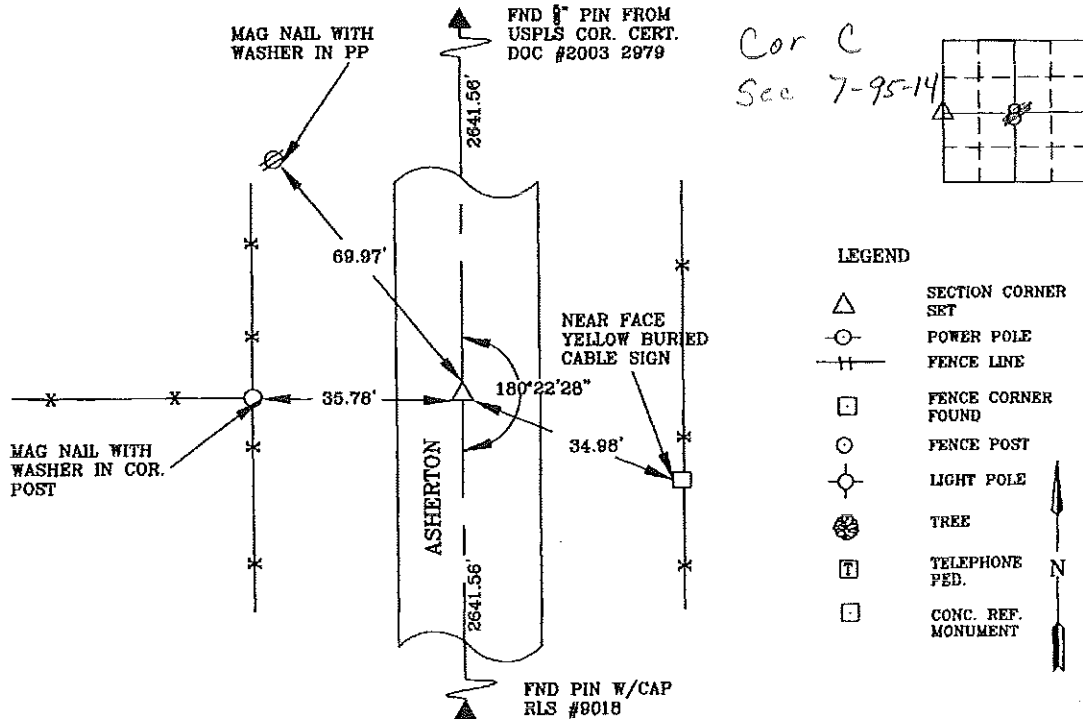
Land Survey Monuments situated in Section 8 ^{OF 7}, Township 95 N, Range 14 W, of the Fifth Principal Meridian, CHICKASAW County, Iowa
 Previously recorded in Book _____, Page _____

Show reason for preparing this certificate, the evidence and detailed procedures used in establishing the corner positions and monumentation found or placed.)

Monument Description and Remarks: WEST QUARTER CORNER 8-95N-14W
NO COUNTY ENG. TIES. PROBED AREA & SEARCHED WITH MAGNETIC LOCATOR. NO MONUMENT FOUND.
SET 5/8" X 24" REBAR, W/ALUM CAP #12088 AT MIDPOINT DISTANCE BETWEEN NW CORNER AND SW CORNER
IN CENTERLINE OF ROAD AS DEFINED BY R.O.W. FENCES. CORNER LINES UP WITH FENCE TO THE WEST.

PLAN - VIEW

(Show a minimum of three reference ties to durable physical objects, relevant monuments and physical conditions recovery of the corner.)



I hereby certify that this land surveying document was prepared and the related survey work was performed by me or under my direct personal supervision and that I am a duly licensed Land Surveyor under the laws of the State of Iowa.



Wendell J. Lupkes 1-4-08
WENDELL J. LUPKES, L.S. DATE
 License number 12088
 My license renewal date is December 31, 2008
 Pages or sheets covered by this seal: 1

List Corner to be Indexed			
Corner	Section	Twp	Range
W QTR. COR	8	95	14



VJ Engineering
 1501 Technology Parkway
 Cedar Falls, Iowa - 319-266-5829

**SECTION CORNER
 REFERENCE TIES**

scale None
 drawn by MJK
 date 12/20/07