

*Herold - Reicks Surveying, 25 1/2 East Main Street, Suite 204, New Hampton, IA 50759, Ph. 74-394-2725*

### UNITED STATES PUBLIC LAND SURVEY CORNER CERTIFICATE

Land Survey Monuments situated in Section 7, Township 95 North, Range 14 West of the Fifth Principal Meridian, Chickasaw County, Iowa. Not previously recorded in the Chickasaw County Recorder's office.

This certificate is being prepared in compliance with Iowa Code Chapter 355.11 because:

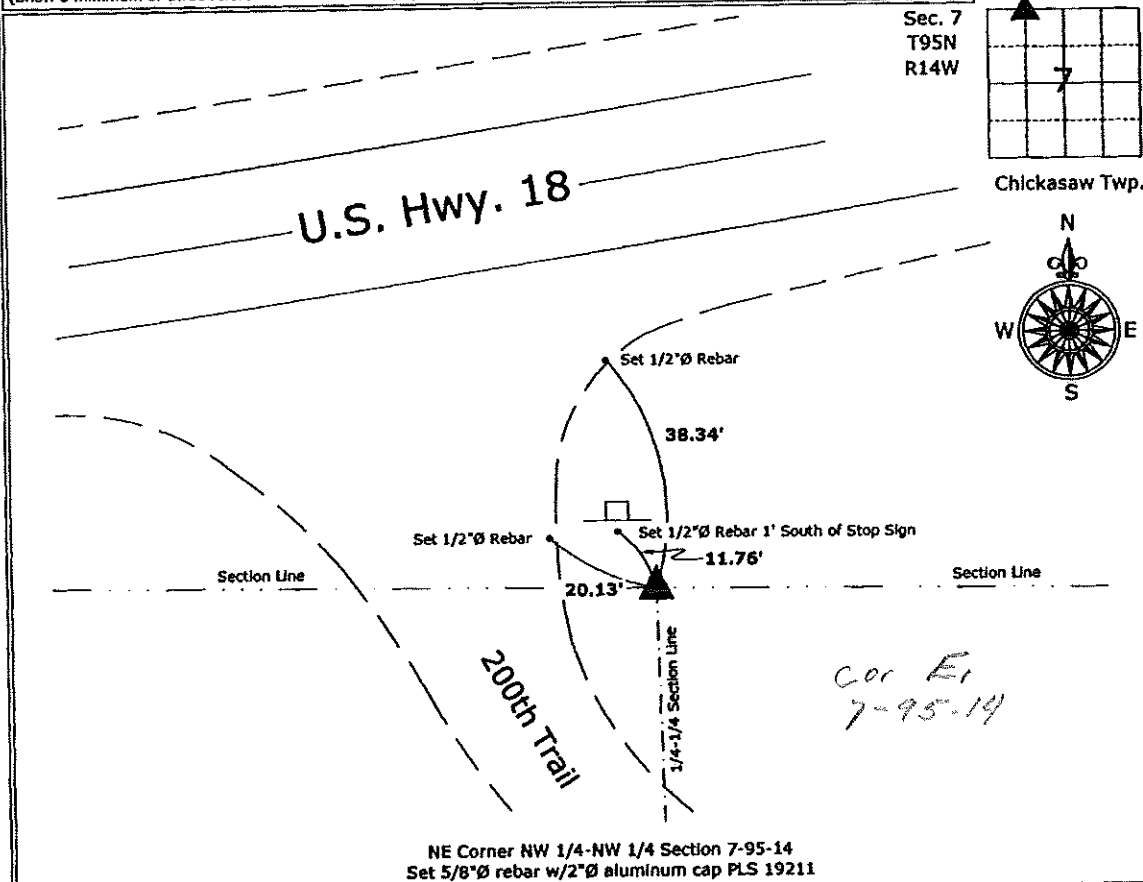
- There is no certificate on file for this corner.
- There are no longer three valid ties of record.
- There are changes to reference ties of record.
- There is change of monumentation of record.
- To clarify description of record monument (ties).

Monument Description and Remarks:

**NE Corner NW 1/4-NW 1/4:** Set 5/8"Ø rebar w/2"Ø aluminum cap PLS 19211 by extending the monumented East Line of the Northwest Quarter of the Northwest Quarter to the North Line of the Northwest Quarter.

#### PLAN - VIEW

(Show a minimum of three reference ties to durable physical objects, relevant monuments and physical conditions that will enable recovery of the corner.)



NE Corner NW 1/4-NW 1/4 Section 7-95-14  
 Set 5/8"Ø rebar w/2"Ø aluminum cap PLS 19211

*Cor E1  
7-95-14*



I hereby certify that this land surveying document was prepared and the related survey work was performed by me or under my direct personal supervision and that I am a duly licensed Land Surveyor under the laws of the State of Iowa.  
*Kirk D. Reicks 10-7-09*  
 Kirk D. Reicks Date:  
 License number 19211  
 My license renewal date is December 31, 2010.  
 Sheets covered by this seal: Individual sheet only

List Corners to be Indexed			
Corners	Section	Twp.	Range
NE-NW-NW	7	95	14
Project Number: 2009-102			
FB: Chickasaw County 1, Pgs. 41,43			