

Section 6-95-14
As referred to in
Engr. Tie Book

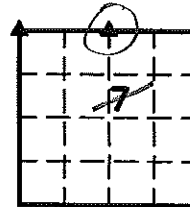
Chickasaw Co. Recorder
Cindy Messersmith
Fee Book 2008-1265
06/26/2008 @0937AM
SCC SEC COR CERT
Book: Page: # Pages: 2
Total Fees: \$12.00

Scott A. Steinfadt LS, Ryken Engineering, 711 Park Avenue, Ackley, Iowa 50801 - Ph. 641-847-3273 - Fax 641-847-2303

UNITED STATES PUBLIC LAND SURVEY CORNER CERTIFICATE

OF 6

Land Survey Monuments situated in Section 7, Township 95 North, Range 14 West, of the Fifth Principal Meridian, Chickasaw County, Iowa, Previously recorded in (see below) in County Recorder's Office
NW Cor and NW Cor - Not Applicable



These corners were used for a survey in this section for Lawrence and Vera Bunston.

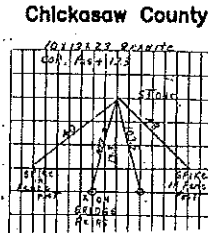
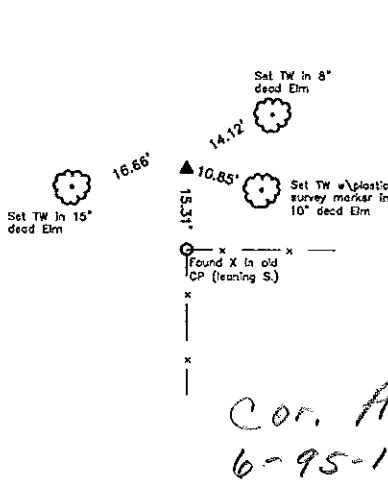
Legend

- BC = Nail with Bottle Cap
- BP = Bronze Post
- CP = Corner Post
- CMP = Corrugated Metal Pipe
- CM = 4" Sq Concrete Monument with 1/2" Iron rod in center (tie to rod)
- CX = Cut 'X'
- GP = Gate Post
- ID = Inside Diameter
- OD = Outside Diameter
- PP = Power Pole
- PW = Nail with Plastic Washer
- RCP = Reinforced Concrete Pipe
- RCB = Reinforced Concrete Box Culvert
- ROW = Right of Way
- RW = Nail with Reflective Round Washer
- R/W = Iron ROW Rail
- SFP = Steel 'T' Post
- SW = Nail with Square Metal Washer
- TP = Telephone Pedestal
- TW = Nail with Round Metal Washer
- WFP = Wood Fence Post
- X = X Nails

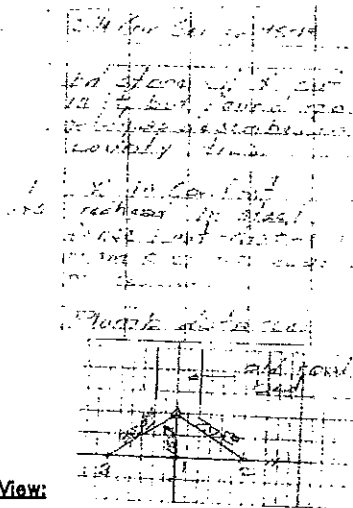


NW Corner

RECORD TIES



Iowa D.O.T.



Monument Description, Remarks, and Plan View:

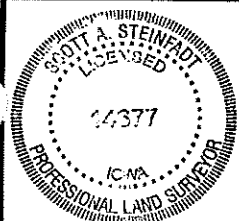
NW Cor. - History of Corner =
1935 - "Stone" per Iowa State Highway Commission Proj. 160 Improvement Plans, Sheet 7.
1989, 7-25 - "Fd. stone w/ 'X' cut in it, but found no plugs described in county ties" per Iowa D.O.T. Field Book, page 13 obtained from the Iowa D.O.T. District 2 Mason City Office with ties as shown above.
Co Engr's records indicate that corner is monumented "Plug" and "10 x 13 x 23 granite" with ties as shown above.
Corner Recovery = Searched area with metal detector and excavated a 1.0' N-S x 0.5' E-W x 2.0' deep hole on E. side of a found 10" x 13" x 23" granite stone with cut X in dome top, 0.3' exposed, matching one remaining Iowa D.O.T. tie and County Engineer's record of size of stone. Also found pieces of clay tile, 1.0'± deep on E. side of stone. Placed pink plastic cased magnet on E. side of stone below dome top for locating purposes only and placed tile pieces on top of magnet. Monument found is in apparent centerline of abandoned road bed N-S, 460.0'± S. of centerline joint of Highway 18 NE-SW, in-line with fence line S. and 15.0'± N. of fence line E. Location of monument found matches that of record, monument found matches that of record and record ties are within reason. Therefore, used cut X in stone, 0.3' exposed as the correct corner. All ties are plumb distance.

This certificate is being prepared because there are no certificates on file for this corner.

P:\BOB\CHICKASAW\CO\S79514\BUNSTON4666\dwg\4666ccrcert.dwg

List Corners to be Indexed

Corners	Section	Twp	Range
NW Cor.	7	T95N	R14W
NW Cor.	7	T95N	R14W



I hereby certify that this land surveying document was prepared and the related survey work was performed by me or under my direct personal supervision and that I am a duly licensed Land Surveyor under the laws of the State of Iowa.
Scott A. Steinfadt PLS
SCOTT A. STEINFADT, LS
Date: 06/24/2008 license number: 14677
My license renewal date is December 31, 2008
Pages or sheets covered by this seal: 1 & 2