

Section 6-95-14
As referred to in
Engr. Tie Book

FILED 2003-2979
RECORDER'S OFFICE
CHICKASAW COUNTY, IOWA
2003 SEP 23 AM 9 07
CIRDY MESSERSMITH
COUNTY RECORDER

TEKIPPE ENGINEERING, P.C., 128 South Vine Street, West Union, Iowa 52175 Phone (563) 422-5131

UNITED STATES PUBLIC LAND SURVEY CORNER CERTIFICATE

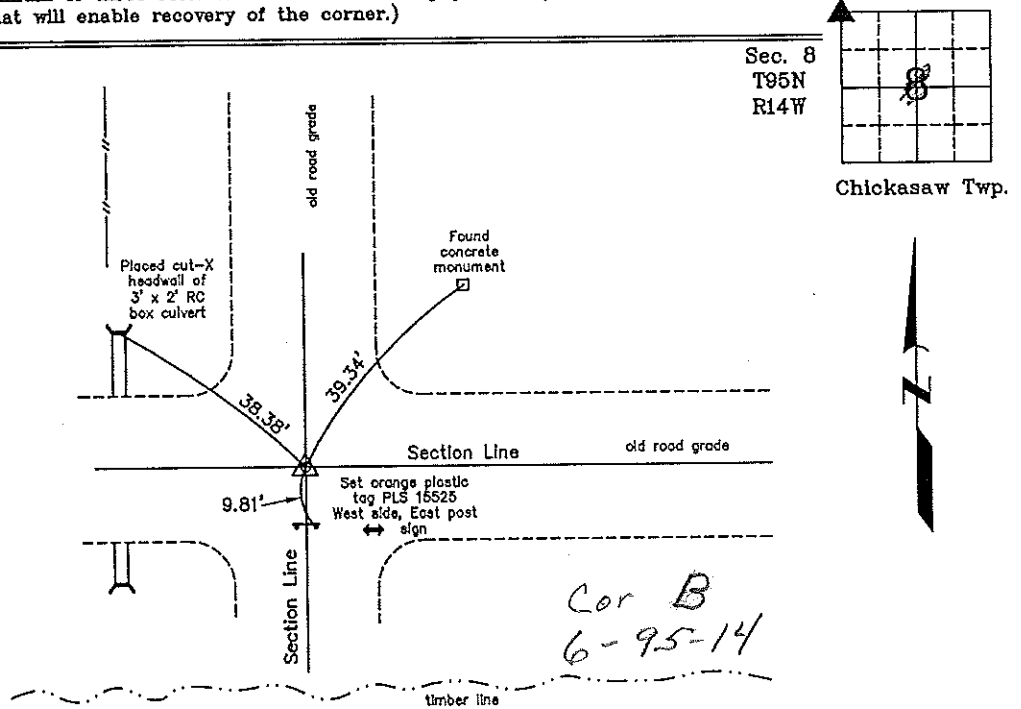
OF
Land Survey Monuments situated in Section 6, Township 95 North, Range
14 West of the Fifth Principal Meridian, CHICKASAW County, Iowa.
Previously recorded in none in County Recorder's Office.
(book, page, document number, etc.)

(Show reason for preparing this certificate, the evidence and detailed procedures used in establishing the corner positions and monumentation found or placed.)

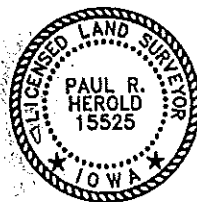
Monument Description and Remarks: NW Corner Section 8 T95N R14W: Found 5/8"Ø iron pin with information obtained from the as-built plans for U.S. Highway 18.

PLAN - VIEW

(Show a minimum of three reference ties to durable physical objects, relevant monuments and physical conditions that will enable recovery of the corner.)



NW Corner Section 8 T95N R14W
Found 5/8"Ø Iron pin



I hereby certify that this land surveying document was prepared and the related survey work was performed by me or under my direct personal supervision and that I am a duly licensed Land Surveyor under the laws of the State of Iowa.

Paul R. Herold 9-19-03
Paul R. Herold Date
License number 15525
My license renewal date is December 31, 2004.
Sheets covered by this seal: Individual

List Corners to be Indexed			
Corners	Section	Twp.	Range
NW	8	95N	14W

Filed 9-30-03

X:\Section Corners\Sec. 08\8-95-14a.dwg