

UNITED STATES PUBLIC LAND SURVEY CORNER CERTIFICATE

OF

Land Survey Monuments situated in Section 8, Township 95 North, Range 14 West of the Fifth Principal Meridian, CHICKASAW County, Iowa. Previously recorded in Book 147, Page 117 in County Recorder's Office.

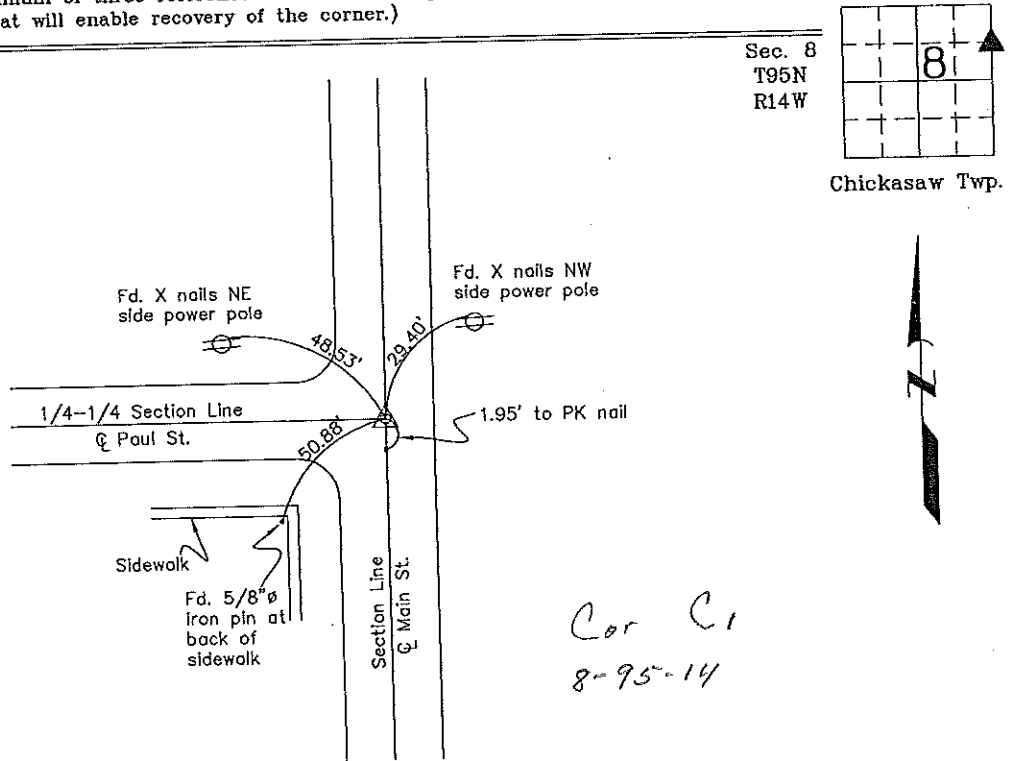
(Show reason for preparing this certificate, the evidence and detailed procedures used in establishing the corner positions and monumentation found or placed.)

Monument Description and Remarks: SE Corner NE 1/4-NE 1/4 Section 8 T95N R14W. Set MAG nail with stainless steel washer LS 7060 midway and on line between the NE Corner and the N 1/4 Corner of Section 8 as indicated on original plat of the City of Bassett after comparing with field evidence in the City. Did not use previously recorded PK nail because it did not match original information.

PLAN - VIEW

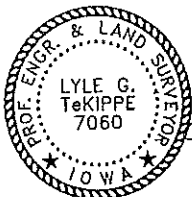
Project Number 00240.1S  
PB. 481 PG. 6-8

(Show a minimum of three reference ties to durable physical objects, relevant monuments and physical conditions that will enable recovery of the corner.)



Cor C1  
8-95-14

SE Corner NE 1/4-NE 1/4 Section 8 T95N R14W  
Set MAG nail with stainless steel washer LS 7060



I hereby certify that this land surveying document was prepared and the related survey work was performed by me or under my direct personal supervision and that I am a duly licensed Land Surveyor under the laws of the State of Iowa.

*Lyle G. TeKippe* 12-14-00  
Lyle G. TeKippe Date  
License number 7060  
My license renewal date is December 31, 2000.  
Sheets covered by this seal: Individual

List Corners to be Indexed			
Corners	Section	Twp.	Range
SE-NE-NE C1	8	95	14

Filed 3-20-01

# UNITED STATES PUBLIC LAND SURVEY CORNER CERTIFICATE

SECTION 8 , TOWNSHIP 95 , RANGE 14 OF THE 5TH. P.M.  
 IN CHICKASAW COUNTY, IOWA

CORNER: SE COR NE1/4 NE1/4

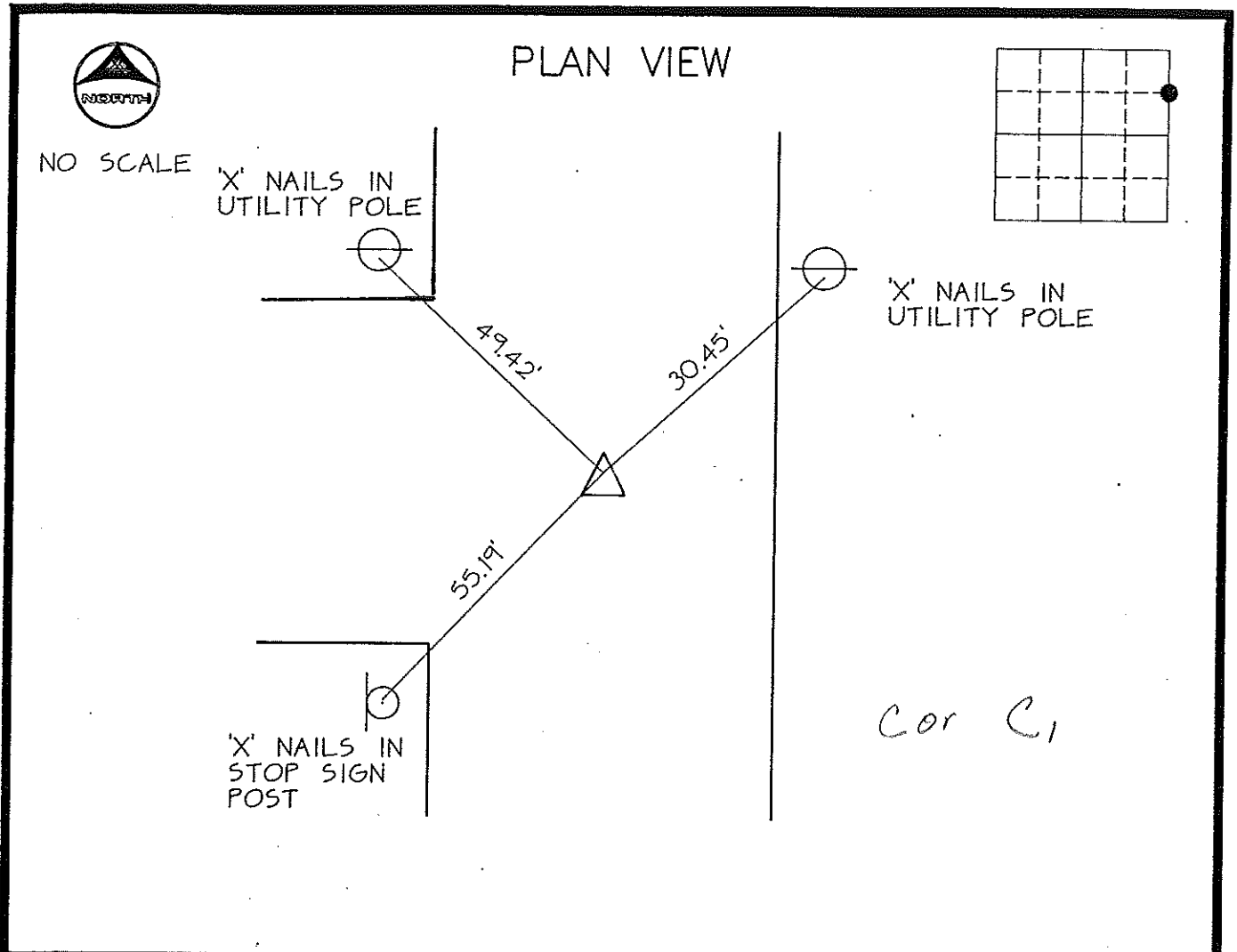
DESCRIPTION AND REMARKS:

**SET** P.K. NAIL

*Place in  
 Tee Book 4/91  
 JFM*

*See File  
 2000-2236*

PREVIOUSLY RECORDED IN BOOK \_\_\_\_\_, PAGE \_\_\_\_\_



CERTIFICATION:  
 I HEREBY CERTIFY THAT THIS MAP, PLAT, OR SURVEY WAS MADE BY ME OR UNDER MY DIRECT PERSONAL SUPERVISION AND THAT I AM A DULY REGISTERED LAND SURVEYOR UNDER THE LAWS OF THE STATE OF IOWA.

*Thomas V. Craft*  
 THOMAS V. CRAFT REG. L.S. NO. 7549

DATE: *4/12/91*



MCN/213840

INDEXING ALTERNATIVES  
 CORNER SECTION TWP RANGE

*147-117*