

Chickasaw Co. Recorder  
 Cindy Messersmith  
**Fee Book 2008-0048**  
 01/08/2008 @0843AM  
 SCC SEC COR CERT  
 Book: Page: # Pages: 1  
 Total Fees: \$7.00

**UNITED STATES PUBLIC LAND SURVEY CORNER CERTIFICATE**

OF

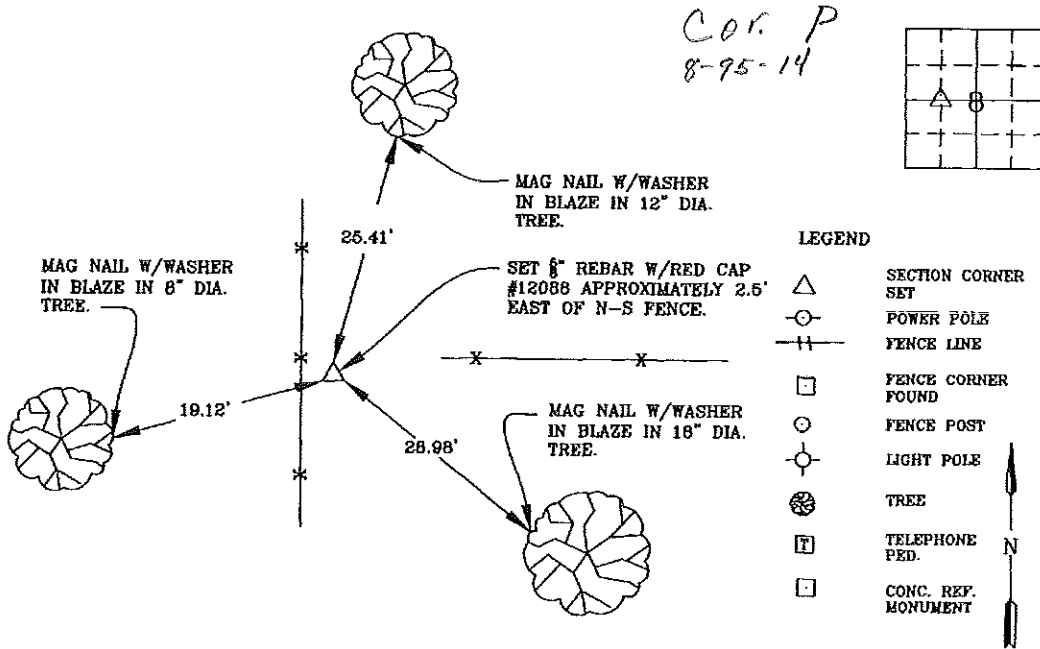
Land Survey Monuments situated in Section 8, Township 95 N, Range 14 W, of the Fifth Principal Meridian, CHICKASAW County, Iowa  
 Previously recorded in Book \_\_\_\_\_, Page \_\_\_\_\_

Show reason for preparing this certificate, the evidence and detailed procedures used in establishing the corner positions and monumentation found or placed.)

Monument Description and Remarks: NW CORNER OF THE NE QTR. OF THE SW QTR.  
SET 5/8" X 24" REBAR, W/RED CAP #12088.

**PLAN - VIEW**

(Show a minimum of three reference ties to durable physical objects, relevant monuments and physical conditions recovery of the corner.)



I hereby certify that this land surveying document was prepared and the related survey work was performed by me or under my direct personal supervision and that I am a duly licensed Land Surveyor under the laws of the State of Iowa.



*Wendell J. Lupkes 1-4-08*  
**WENDELL J. LUPKES, L.S.** DATE  
 License number 12088  
 My license renewal date is December 31, 2008  
 Pages or sheets covered by this seal: 1

List Corner to be Indexed

Corner	Section	Twp	Range
NW COR	8	95	14
NE QTR.			
SW QTR.			



VJ Engineering  
 1501 Technology Parkway  
 Cedar Falls, Iowa - 319-266-5829

SECTION CORNER  
 REFERENCE TIES

scale  
 None  
 drawn by  
 MAX  
 date  
 12/20/07