

# UNITED STATES PUBLIC LAND SURVEY CORNER CERTIFICATE

SECTION 8 , TOWNSHIP 95 , RANGE 14 OF THE 5TH. P.M.  
 IN CHICKASAW COUNTY, IOWA

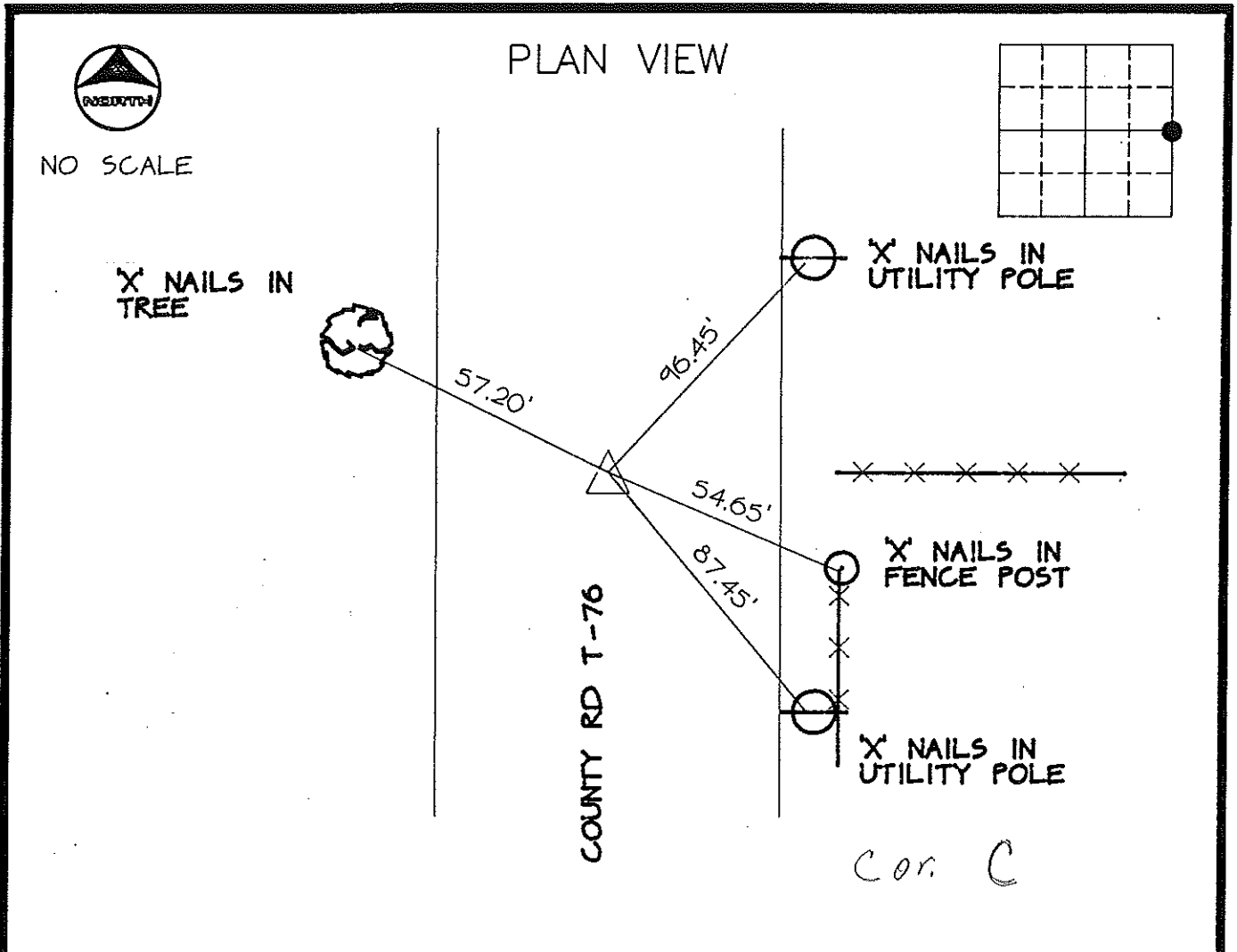
CORNER: SE COR NE1/4, AKA E1/4

DESCRIPTION AND REMARKS:

*Found* P.K. NAIL  
 CENTERLINE T-76

*Placed in tie  
 Book 4/91  
 JFM*

PREVIOUSLY RECORDED IN BOOK \_\_\_\_\_, PAGE \_\_\_\_\_



CERTIFICATION:  
 I HEREBY CERTIFY THAT THIS MAP, PLAT, OR SURVEY WAS MADE BY  
 ME OR UNDER MY DIRECT PERSONAL SUPERVISION AND THAT I AM A  
 DULY REGISTERED LAND SURVEYOR UNDER THE LAWS OF THE STATE  
 OF IOWA.

*Thomas V. Craft*  
 THOMAS V. CRAFT REG. L.S. NO. 7549

DATE: *4/17/91*



MCN/213840

## INDEXING ALTERNATIVES

CORNER	SECTION	TWP	RANGE
W1/4	9	95	14

*147-116*