

UNITED STATES PUBLIC LAND SURVEY CORNER CERTIFICATE
 OF

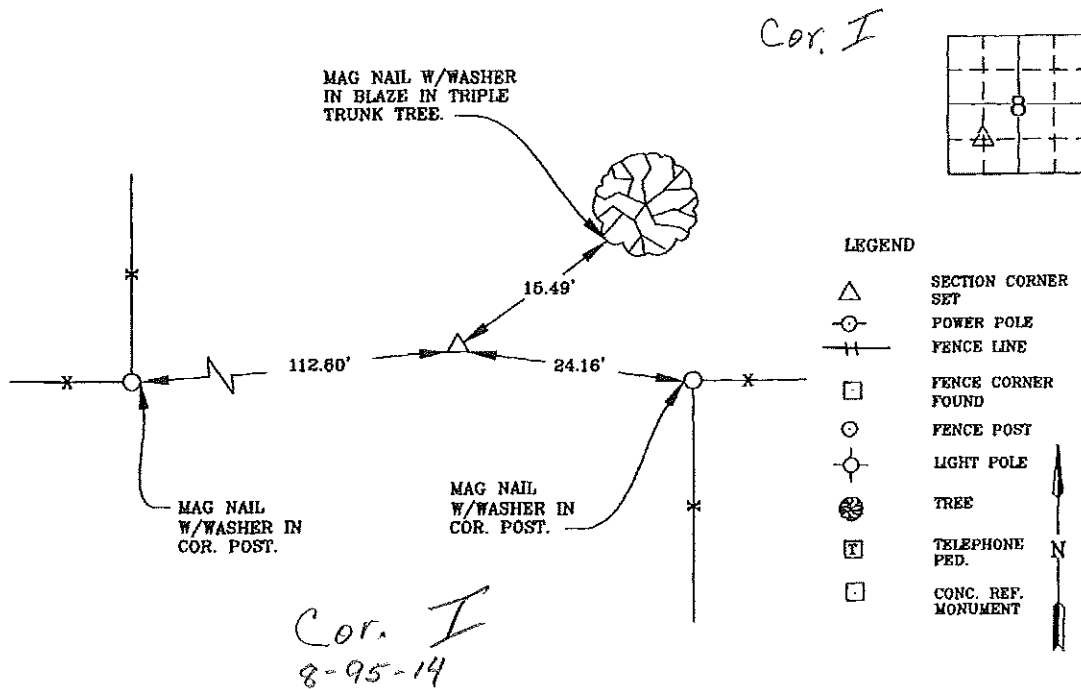
Land Survey Monuments situated in Section 8, Township 95 N, Range 14 W, of the Fifth Principal Meridian, CHICKASAW County, Iowa
 Previously recorded in Book _____ Page _____

Show reason for preparing this certificate, the evidence and detailed procedures used in establishing the corner positions and monumentation found or placed.)

Monument Description and Remarks: SW CORNER OF THE NE QTR. OF THE SW QTR.
SET 5/8" X 24" REBAR. W/RED CAP #12088.

PLAN - VIEW

(Show a minimum of three reference ties to durable physical objects, relevant monuments and physical conditions recovery of the corner.)



I hereby certify that this land surveying document was prepared and the related survey work was performed by me or under my direct personal supervision and that I am a duly licensed Land Surveyor under the laws of the State of Iowa.

List Corner to be Indexed

Corner	Section	Twp	Range
SW COR	B	95	14
NE QTR.			
SW QTR.			



Wendell J. Lupkes 1-4-08
WENDELL J. LUPKES, L.S. DATE
 License number 12088
 My license renewal date is December 31, 2008
 Pages or sheets covered by this seal: 1



VJ Engineering
 1501 Technology Parkway
 Cedar Falls, Iowa - 319-266-5829

**SECTION CORNER
 REFERENCE TIES**

Scale
 Name
 drawn by
 date
 12/20/07