

Chickasaw Co. Recorder  
 Cindy Messersmith  
**Fee Book 2016-0350**  
 03/16/2016 @0944AM  
 SCC SEC COR CERT # Pages: 1  
 Book: Page: Total Fees: \$7.00

PREPARED BY / RETURN TO: KENNETH D. STARK IOWA DEPARTMENT OF TRANSPORTATION 426 43rd ST. SW MASON CITY, IA 50401 841-423-7584

**UNITED STATES PUBLIC LAND SURVEY CORNER CERTIFICATE**

OF

Land Survey Monuments situated in Section 08<sup>5</sup>, Township 95N, Range 14W  
 of the Fifth Principal Meridian, CHICKASAW County, Iowa.

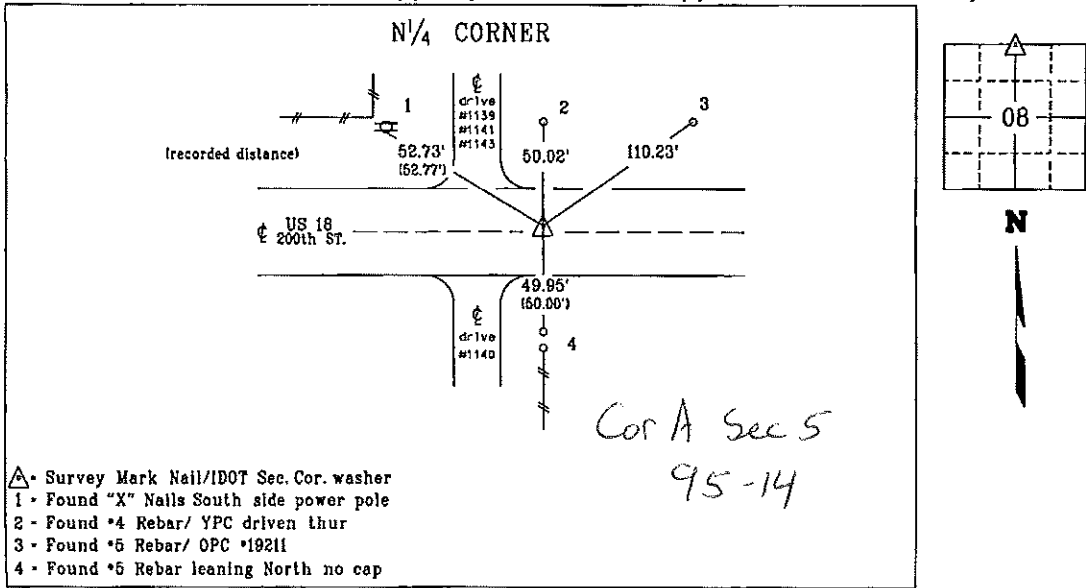
Previously recorded in Fee Book 2009-1116 in County Recorder's Office.  
(book, page, document number, etc.)

(Show reason for preparing this certificate, the evidence and detailed procedures used in establishing the corner positions and monumentation found or placed.)

Monument Description and Remarks: N<sup>1</sup>/<sub>4</sub> CORNER: Replaced previously found Nail Stem with a Survey Mark Nail/IDOT Sec. Cor. washer, 1.5' +/- North of US 18 per previous cert of record Fee Book 2009-1116 after HMA resurfacing project MP-018-2(707)220--76-19.  
 Reason for cert: Monumentation and ties have changed.

**PLAN - VIEW**

(Show a minimum of three reference ties to durable physical objects, relevant monuments and physical conditions that will enable recovery of the corner.)



Cor A Sec 5  
 95-14

- ▲ Survey Mark Nail/IDOT Sec. Cor. washer
- 1 - Found "X" Nails South side power pole
- 2 - Found \*4 Rebar/ YPC driven thur
- 3 - Found \*5 Rebar/ OPC \*19211
- 4 - Found \*5 Rebar leaning North no cap

List Corners to be Indexed

Corner	Section	Township	Range
N <sup>1</sup> / <sub>4</sub> CORNER	08	95N	14W

YPC - Yellow Plastic Cap  
 OPC - Orange Plastic Cap

drawn by: cts 02/16



I hereby certify that this land surveying document was prepared and the related survey work was performed by me or under my personal supervision and that I am duly Licensed Land Surveyor under the laws of the state of Iowa.  
 Kenneth D. Stark Date 03-14-16  
 License number 10898  
 My License renewal date is December 31, 2017 1  
 Pages or sheets covered by this seal. \_\_\_\_\_

19-08-95-14

filed by: me. cs  
 right-of-way

Chickasaw Co. Recorder  
 Cindy Messersmith  
**Fee Book 2009-1116**  
 06/02/2009 @0140PM  
 SCC SEC COR CERT  
 Book: Page: # Pages: 1  
 Total Fees: \$7.00

*Sec. 5-95-14  
 As referred to  
 in Engr. Tie Book*

*Herold - Recks Surveying, 25 1/2 East Main Street, Suite 204, New Hampton, IA 50658, Ph. 641-394-2725*

**CORRECTIVE UNITED STATES PUBLIC LAND SURVEY CORNER CERTIFICATE**

Land Survey Monuments situated in:

Section 8, Township 95 North, Range 14 West of the Fifth Principal Meridian,  
Chickasaw County, Iowa. Previously recorded in 2008-0086, 2008-0705  
 In County Recorder's Office. (book, page, document number, etc.)

(Show reason for preparing this certificate, the evidence and detailed procedures used in establishing the corner positions and monumentation found or placed.)

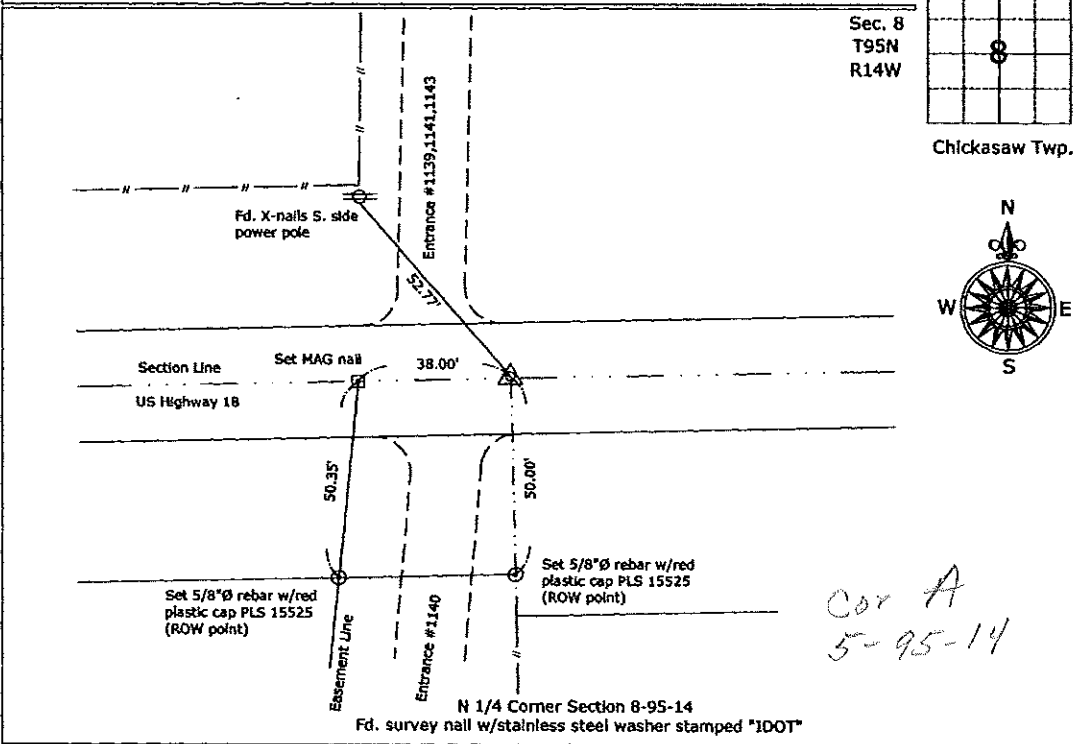
Monument Description and Remarks:

N 1/4 Corner Section 8-95-14: Fd. survey nail w/stainless steel washer stamped "IDOT".

Note: This Corrective section Corner Certificate is to supersede the one recorded January 11, 2008, in order to correct the Range Number on the index of the previous Certificate.

**PLAN - VIEW**

(Show a minimum of three reference ties to durable physical objects, relevant monuments and physical conditions that will enable recovery of the corner.)



I hereby certify that this land surveying document was prepared and the related survey work was performed by me or under my direct personal supervision and that I am a duly licensed Land Surveyor under the laws of the State of Iowa.  
*Paul R. Herold 5-26-09*  
 Paul R. Herold Date:  
 License number 15525  
 My license renewal date is December 31, 2010.  
 Sheets covered by this seal: Individual sheet only

List Corners to be Indexed			
Corners	Section	Twp.	Range
N 1/4	8	95	14
Project Number: 2007-123			
FB: Chickasaw County 1, Pgs. 51-52			

Chickasaw Co. Recorder  
 Cindy Messersmith  
**Fee Book 2008-0705**  
 04/18/2008 @0901AM  
 SCC: SEC COR CERT  
 Book: Page: # Pages: 1  
 Total Fees: \$7.00

## UNITED STATES PUBLIC LAND SURVEY CORNER CERTIFICATE OF

LAND SURVEY MONUMENTS SITUATED IN SECTION NO. 5, TOWNSHIP NO. 95 NORTH, RANGE NO. 14 WEST OF THE FIFTH PRINCIPAL MERIDIAN, CHICKASAW COUNTY, IOWA.

PREVIOUSLY RECORDED IN N/A

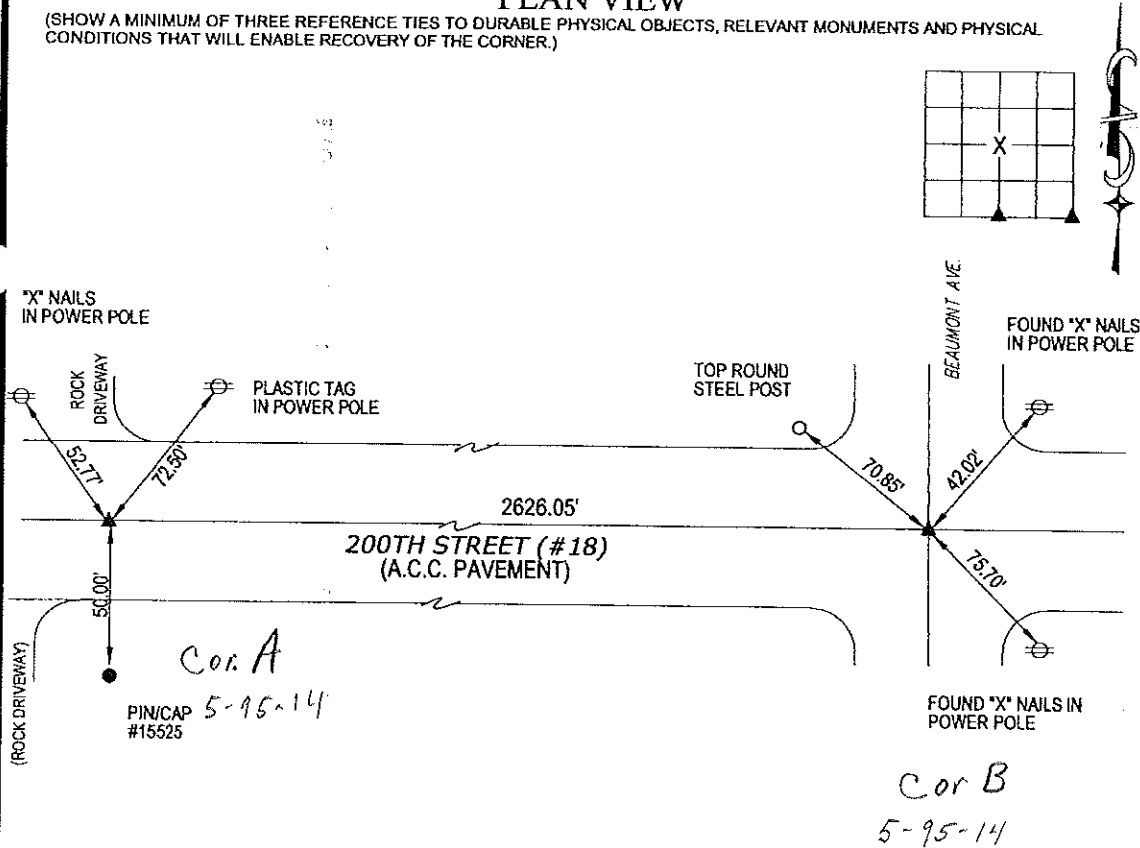
(SHOW REASON FOR PREPARING THIS CERTIFICATE, THE EVIDENCE AND DETAILED PROCEDURES USED IN ESTABLISHING THE CORNER POSITIONS AND MONUMENTATION FOUND OR PLACED.)

MONUMENT DESCRIPTION AND REMARKS:

FOUND NO CERTIFICATE ON FILE FOR SOUTH 1/4 COR. AT TIME OF SURVEY. FOUND CERTIFICATE FOR SE COR. BUT FOUND NONE OF THE RECORDED TIES. SEARCHED AREA AT EACH CORNER AND FOUND I.D.O.T. NAIL WITH WASHER LABELED SECTION CORNER AT EACH OF THE CORNERS. USED NAIL AND WASHER AS CORNER. USED EACH CORNER FOR SURVEY IN SECTION 5 FOR MIKE LINK.

### PLAN VIEW

(SHOW A MINIMUM OF THREE REFERENCE TIES TO DURABLE PHYSICAL OBJECTS, RELEVANT MONUMENTS AND PHYSICAL CONDITIONS THAT WILL ENABLE RECOVERY OF THE CORNER.)



I HEREBY CERTIFY THAT THIS LAND SURVEYING DOCUMENT WAS PREPARED AND THE RELATED SURVEY WORK WAS PERFORMED BY ME OR UNDER MY DIRECT PERSONAL SUPERVISION AND THAT I AM A DULY LICENSED LAND SURVEYOR UNDER THE LAWS OF THE STATE OF IOWA.

*Steve Busse*  
 STEVE BUSSE  
 LICENSE NUMBER 9018  
 MY LICENSE RENEWAL DATE IS DECEMBER 31, 2008  
 PAGES OR SHEETS COVERED BY THIS SEAL 1

4/16/08  
 DATE

G.P. = 2" GAS PIPE  
 CONC MONU = CONCRETE MONUMENT W/ PIN & ALUM CAP  
 OPT = PLASTIC TAG (O=ORANGE, Y=YELLOW)  
 (00) RECORDED AS

LIST CORNERS TO BE INDEXED			
CORNER	SECTION	TOWNSHIP	RANGE
SOUTH 1/4 COR.	5	95	14
SOUTHEAST COR.	5	95	14

