

Chickasaw Co. Recorder  
 Cindy Messersmith  
**Fee Book 2016-0349**  
 03/16/2016 @0940AM  
 SCC SEC COR CERT  
 Book Page: # Pages: 1  
 Total Fees: \$7.00

PREPARED BY / RETURN TO: KENNETH D. STARK IOWA DEPARTMENT OF TRANSPORTATION 428 43rd ST. SW MASON CITY, IA 50401 641-423-7584

**UNITED STATES PUBLIC LAND SURVEY CORNER CERTIFICATE**

OF

Land Survey Monuments situated in Section 09<sup>S</sup>, Township 95N, Range 14W  
 of the Fifth Principal Meridian, CHICKASAW County, Iowa.

Previously recorded in Fee Book 2008-0705 in County Recorder's Office.  
(book, page, document number, etc.)

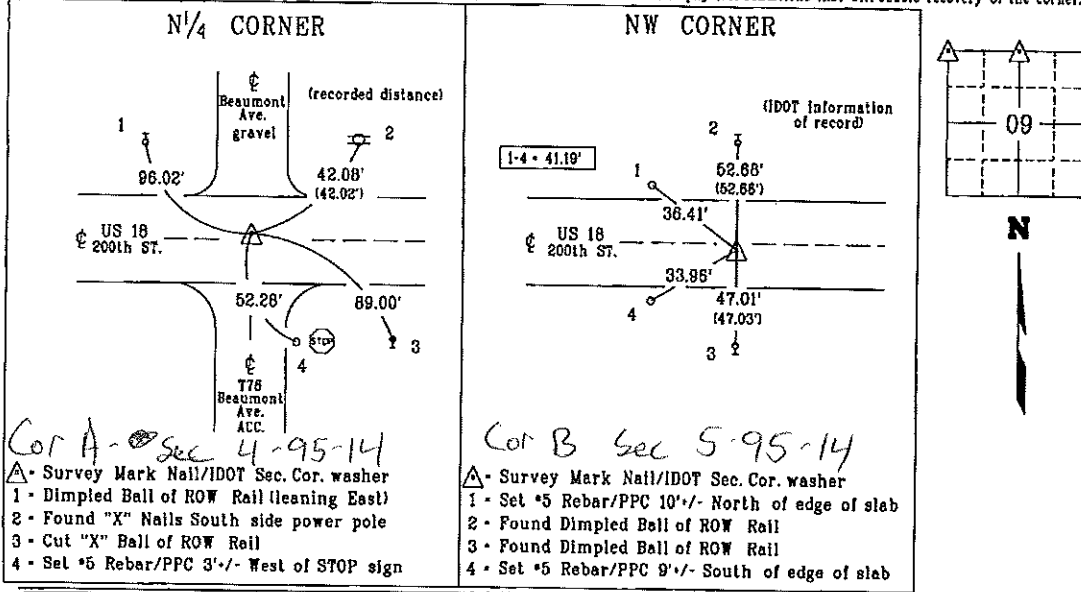
(Show reason for preparing this certificate, the evidence and detailed procedures used in establishing the corner positions and monumentation found or placed.)

Monument Description and Remarks: NW CORNER: Replaced previously found Survey Mark Nail/  
IDOT Sec. Cor. washer with a Survey Mark Nail/IDOT Sec. Cor. washer, 0.5' +/- North of US 18 per  
previous cert of record Fee Book 2008-0705 after HMA resurfacing project MP-018-2(707)220--76-19.  
 Reason for cert: Monumentation and ties have changed.

N/4 CORNER: Replaced previously found Survey Mark Nail/IDOT Sec. Cor. washer with a Survey  
Mark Nail/IDOT Sec. Cor. washer, 2.25' +/- South of US 18 per IDOT information of record supplied  
by New Hampton Office after HMA resurfacing project MP-018-2(707)220--76-19.  
 Reason for cert: Monumentation and ties have changed.

**PLAN - VIEW**

(Show a minimum of three reference ties to durable physical objects, relevant monuments and physical conditions that will enable recovery of the corner.)



I hereby certify that this land surveying document was prepared and the related survey work was performed by me or under my personal supervision and that I am duly licensed Land Surveyor under the laws of the state of Iowa.  
 Kenneth D. Stark Date 03-14-16  
 License number 10888  
 My License renewal date is December 31, 2017  
 Pages or sheets covered by this seal. 1

List Corners to be Indexed

Corner	Section	Township	Range
--------	---------	----------	-------

NW CORNER	09	95N	14W
N/4 CORNER	09	95N	14W

PPC - Pink Plastic Cap (reference point)

# UNITED STATES PUBLIC LAND SURVEY CORNER CERTIFICATE

OF

Land Survey Monuments situated in Section 09<sup>4</sup>, Township 95N, Range 14W  
of the Fifth Principal Meridian, CHICKASAW County, Iowa.

Previously recorded in Fee Book 2008-0705 in County Recorder's Office.  
(book, page, document number, etc.)

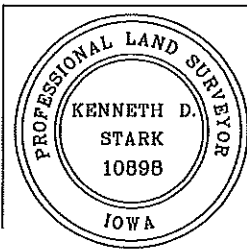
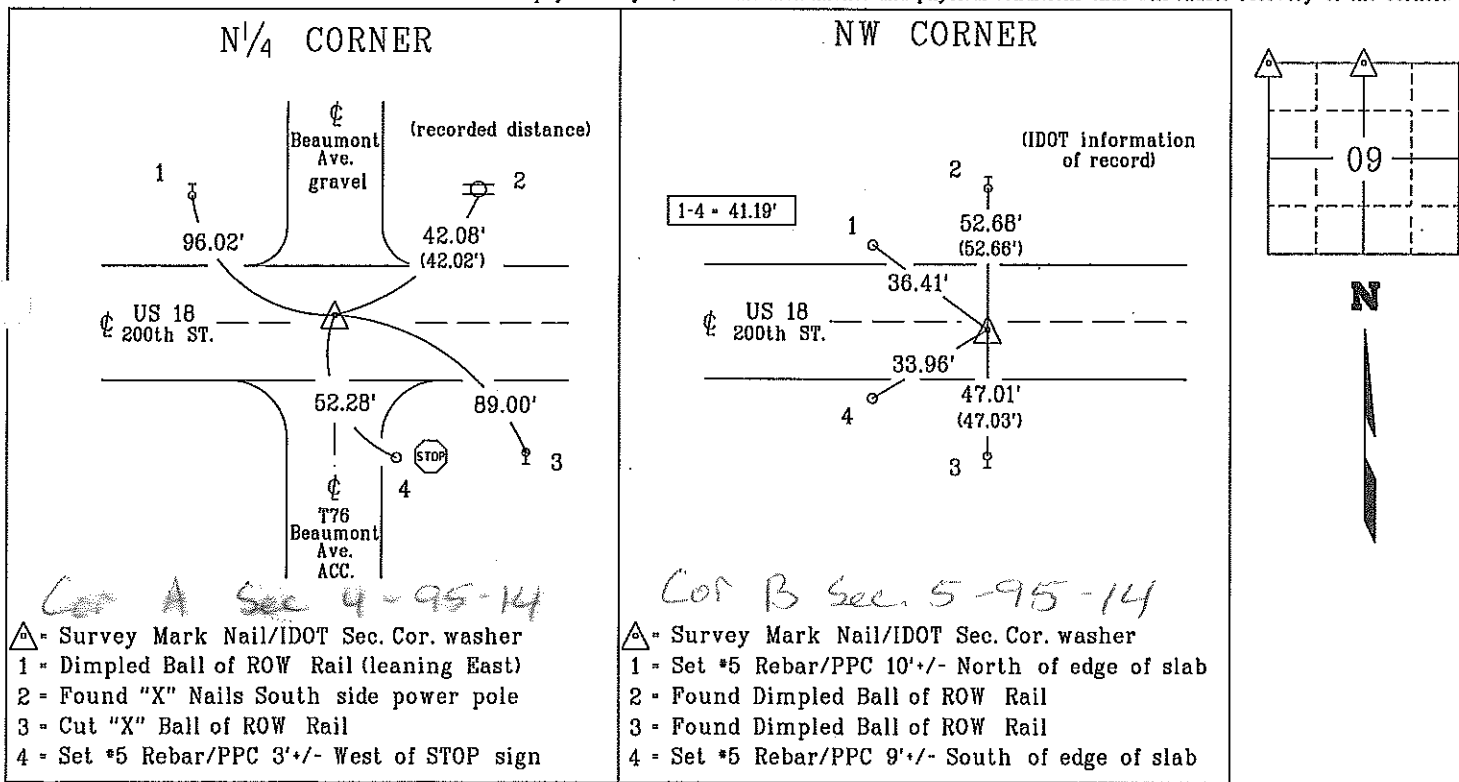
(Show reason for preparing this certificate, the evidence and detailed procedures used in establishing the corner positions and monumentation found or placed.)

Monument Description and Remarks: NW CORNER: Replaced previously found Survey Mark Nail/IDOT Sec. Cor. washer with a Survey Mark Nail/IDOT Sec. Cor. washer, 0.5'+/- North of US 18 per previous cert of record Fee Book 2008-0705 after HMA resurfacing project MP-018-2(707)220--76-19.  
Reason for cert: Monumentation and ties have changed.

N<sup>1</sup>/<sub>4</sub> CORNER: Replaced previously found Survey Mark Nail/IDOT Sec. Cor. washer with a Survey Mark Nail/IDOT Sec. Cor. washer, 2.25'+/- South of US 18 per IDOT information of record supplied by New Hampton Office after HMA resurfacing project MP-018-2(707)220--76-19.  
Reason for cert: Monumentation and ties have changed.

## PLAN - VIEW

(Show a minimum of three reference ties to durable physical objects, relevant monuments and physical conditions that will enable recovery of the corner.)



I hereby certify that this land surveying document was prepared and the related survey work was performed by me or under my personal supervision and that I am duly licensed Land Surveyor under the laws of the state of Iowa.

*Kenneth D. Stark* Date 03-14-16  
Kenneth D. Stark  
License number 10898  
My License renewal date is December 31, 2017  
Pages or sheets covered by this seal. 1

drawn by: cjs 02/16

19-09-95-14

filed by: me, cs  
right-of-way

Chickasaw Co. Recorder  
 Cindy Messersmith  
**Fee Book 2008-0705**  
 04/18/2008 @0901AM  
 SCC: SEC COR CERT  
 Book: Page: # Pages: 1  
 Total Fees: \$7.00

## UNITED STATES PUBLIC LAND SURVEY CORNER CERTIFICATE OF

LAND SURVEY MONUMENTS SITUATED IN SECTION NO. 5, TOWNSHIP NO. 95 NORTH, RANGE NO. 14 WEST OF THE FIFTH PRINCIPAL MERIDIAN, CHICKASAW COUNTY, IOWA.

PREVIOUSLY RECORDED IN N/A

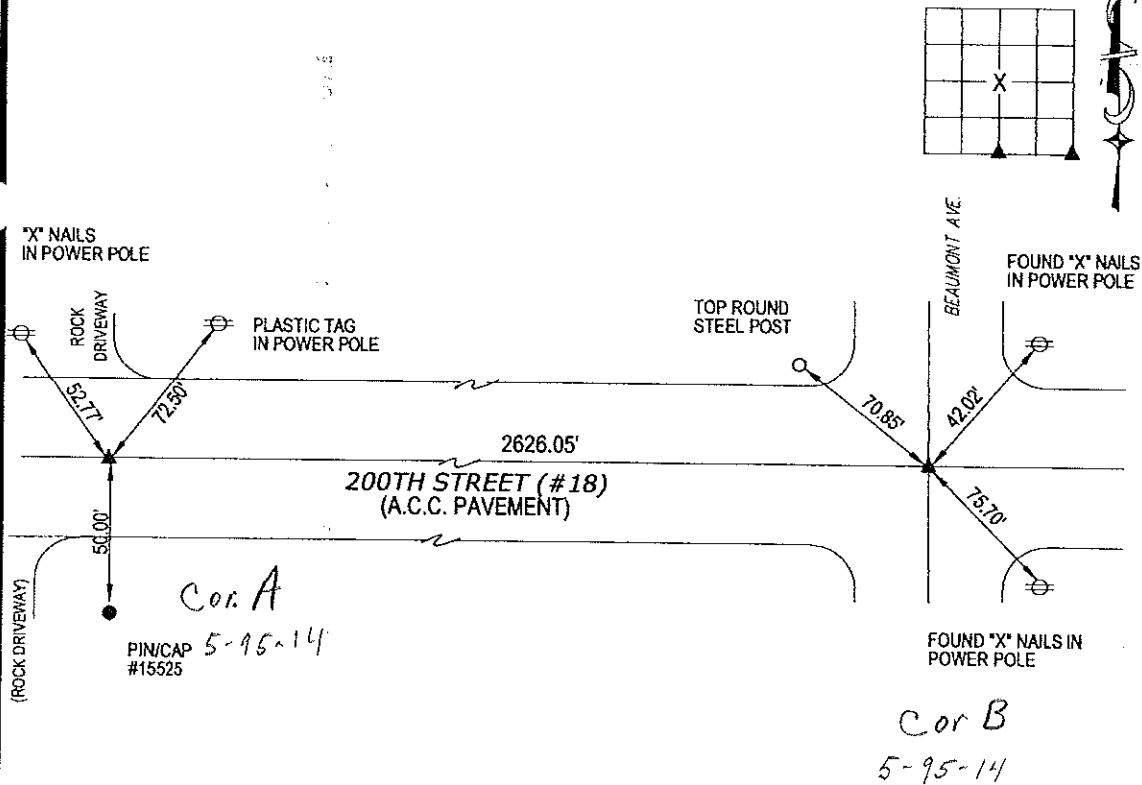
(SHOW REASON FOR PREPARING THIS CERTIFICATE, THE EVIDENCE AND DETAILED PROCEDURES USED IN ESTABLISHING THE CORNER POSITIONS AND MONUMENTATION FOUND OR PLACED.)

MONUMENT DESCRIPTION AND REMARKS:

FOUND NO CERTIFICATE ON FILE FOR SOUTH 1/4 COR. AT TIME OF SURVEY. FOUND CERTIFICATE FOR SE COR. BUT FOUND NONE OF THE RECORDED TIES. SEARCHED AREA AT EACH CORNER AND FOUND I.D.O.T. NAIL WITH WASHER LABELED SECTION CORNER AT EACH OF THE CORNERS. USED NAIL AND WASHER AS CORNER. USED EACH CORNER FOR SURVEY IN SECTION 5 FOR MIKE LINK.

### PLAN VIEW

(SHOW A MINIMUM OF THREE REFERENCE TIES TO DURABLE PHYSICAL OBJECTS, RELEVANT MONUMENTS AND PHYSICAL CONDITIONS THAT WILL ENABLE RECOVERY OF THE CORNER.)



I HEREBY CERTIFY THAT THIS LAND SURVEYING DOCUMENT WAS PREPARED AND THE RELATED SURVEY WORK WAS PERFORMED BY ME OR UNDER MY DIRECT PERSONAL SUPERVISION AND THAT I AM A DULY LICENSED LAND SURVEYOR UNDER THE LAWS OF THE STATE OF IOWA.

*Steve Busse*  
 STEVE BUSSE  
 LICENSE NUMBER 9018  
 MY LICENSE RENEWAL DATE IS DECEMBER 31, 2008  
 PAGES OR SHEETS COVERED BY THIS SEAL 1

G.P. = 2" GAS PIPE  
 CONC MONU = CONCRETE MONUMENT W/ PIN & ALUM CAP  
 OPT = PLASTIC TAG (O=ORANGE, Y=YELLOW)  
 (00) RECORDED AS

#### LIST CORNERS TO BE INDEXED

CORNER	SECTION	TOWNSHIP	RANGE
SOUTH 1/4 COR.	5	95	14
SOUTHEAST COR.	5	95	14