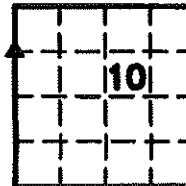


Scott A. Steinfadt PLS, Ryken Engineering, 711 Park Avenue, Aokley, Iowa 50801 - Ph. 641-847-3273 - Fax 641-847-2303

UNITED STATES PUBLIC LAND SURVEY CORNER CERTIFICATE

OF 9

Land Survey Monuments situated in Section 10, Township 95 North, Range 14 West, of the Fifth Principal Meridian, Chickasaw County, Iowa, Previously recorded in (see below) in County Recorder's Office NW Corner SW $\frac{1}{4}$ NW $\frac{1}{4}$ - Book 158 Page 477, Fee Book 2006-1889



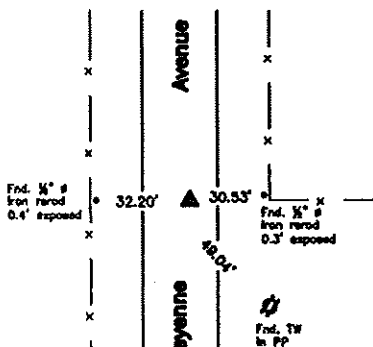
These corners were used for a survey in this section for Raleigh Hill, Inc.

Legend

- | | | |
|--|--|------------------------------------|
| BC = Nail with Bottle Cap | ID = Inside Diameter | R/W = Iron ROW Nail |
| BP = Brace Post | OD = Outside Diameter | SFP = Steel T Post |
| CP = Corner Post | PP = Power Pole | SW = Nail with Square Metal Washer |
| CMP = Corrugated Metal Pipe | FW = Nail with Plastic Washer | TP = Telephone Pedestal |
| CM = 4" Sq Concrete Monument with | RCP = Reinforced Concrete Pipe | TW = Nail with Round Metal Washer |
| 1/2" Iron rod in center (Use to rerod) | RH = Red Head (Nail in wire) | WFP = Wood Fence Post |
| CX = Cut X | ROW = Right of Way | X = X Nails |
| GP = Gate Post | RW = Nail with Reflective Round Washer | |



NW Corner SW $\frac{1}{4}$ NW $\frac{1}{4}$



Monument Description, Remarks, and Plan View:

NW Corner SW $\frac{1}{4}$ NW $\frac{1}{4}$ -

Corner Recovery = Searched area with metal detector and found a Survey Mark nail, flush in ACC patch. Monument is 3.0'± E of centerline of ACC road N-S and 3.8'± N of fence line remnants E. Location of monument found matches that of record, monument found matches that of record, record ties are within reason. Therefore, used Survey Mark nail as the correct corner. All ties are plumb distance.

This certificate is being prepared because there is a change to tie distance to TW in PP.



I hereby certify that this land surveying document was prepared and the related survey work was performed by me or under my direct personal supervision and that I am a duly licensed Land Surveyor under the laws of the State of Iowa.

Scott A. Steinfadt, PLS.
 SCOTT A. STEINFADT, PLS
 Date: 05/04/2011 license number: 14677
 My license renewal date is December 31, 2012

Pages or sheets covered by this seal 1

List Corners to be Indexed

Corners	Section	Twp	Range
NW Cor SW $\frac{1}{4}$ NW $\frac{1}{4}$	10	T95N	R14W

UNITED STATES PUBLIC LAND SURVEY CORNER CERTIFICATE

OF 9

Land Survey Monuments situated in Section 10, Township 95 North, Range 14 West, of the Fifth Principal Meridian, CHICKASAW County, Iowa.
 Previously recorded in NONE in County Recorder's Office.

(book, page, document number, etc.)

(Show reason for preparing this certificate, the evidence and detailed procedures used in establishing the corner positions and monumentation found or placed.)

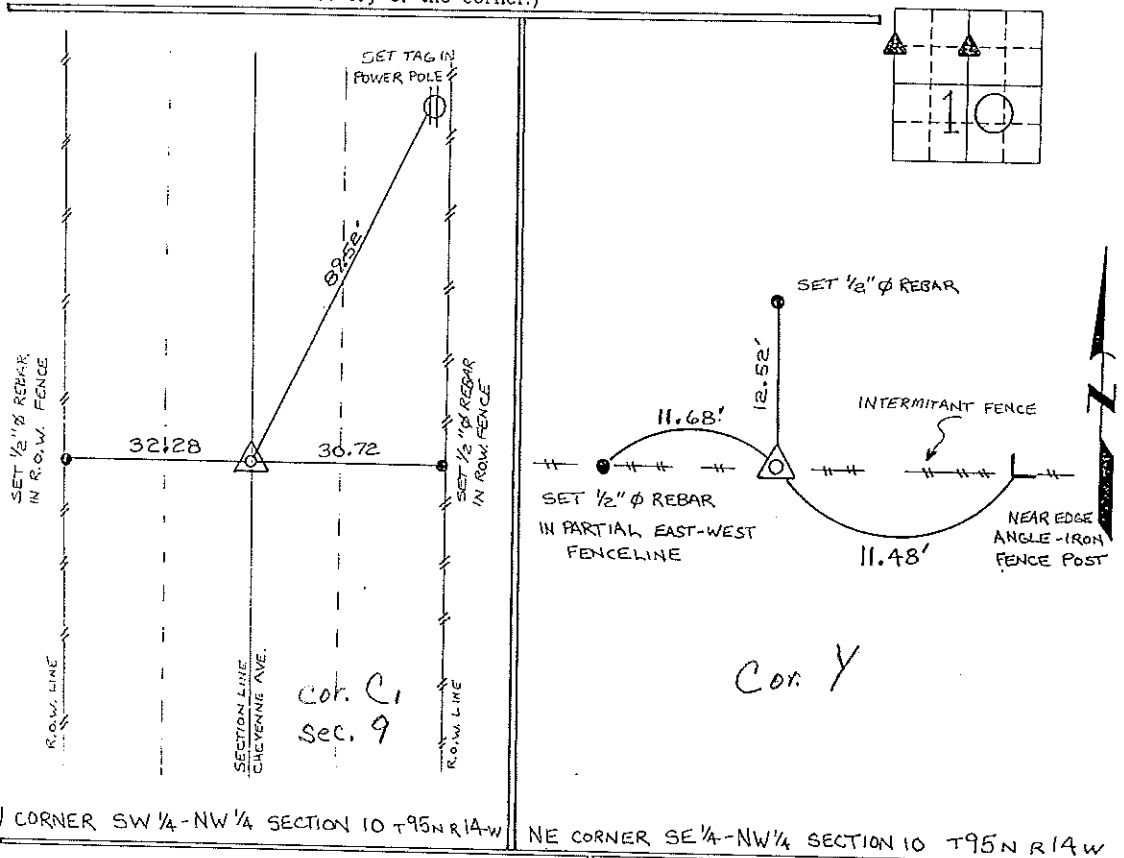
Monument Description and Remarks: NW CORNER SW 1/4 - NW 1/4 SECTION 10 T95N R14W: SET 1/2" Ø REBAR w/ CAP 7060, ON LINE AND EQUADISTANT BETWEEN THE NW CORNER AND THE W 1/4 CORNER.

NE CORNER SE 1/4 - NW 1/4 SECTION 10 T95N R 14W: SET 1/2" Ø REBAR w/ CAP 7060, ON LINE AND EQUADISTANT BETWEEN THE N 1/4 CORNER AND THE CALCULATED CENTER OF SECTION.

*Section 9-95-14
As referred to in
Engl Tie Book*

PLAN - VIEW

(Show a minimum of three reference ties to durable physical objects, relevant monuments and physical conditions that will enable recovery of the corner.)

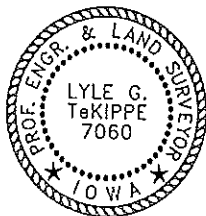


I hereby certify that the survey work was completed and this certificate was prepared by me or under my direct personal supervision and that I am a duly registered land surveyor under the laws of the state of Iowa.

Signature: Lyle G. TeKippe
 Lyle G. TeKippe

Date: 8-17-95 Reg. No. 7060
 My Registration Renewal Date is December 31, 1996

Seal



List Corners to be Indexed			
Corners	Section	Twp.	Range
NW SW 1/4 NW 1/4	10	95N	14W
<u>C, 9-95-14</u>			
NE SE 1/4 NW 1/4	10	95N	14W

X 10-95-14

*Placed in tie book
9/15/95*