

PREPARED BY: BRIAN J. DIEHL LS 13644 10 SUMAC MASON CITY, IOWA 50401 -- (641) 512-8004

SLSI 9-90

**UNITED STATES PUBLIC LAND SURVEY CORNER CERTIFICATE**

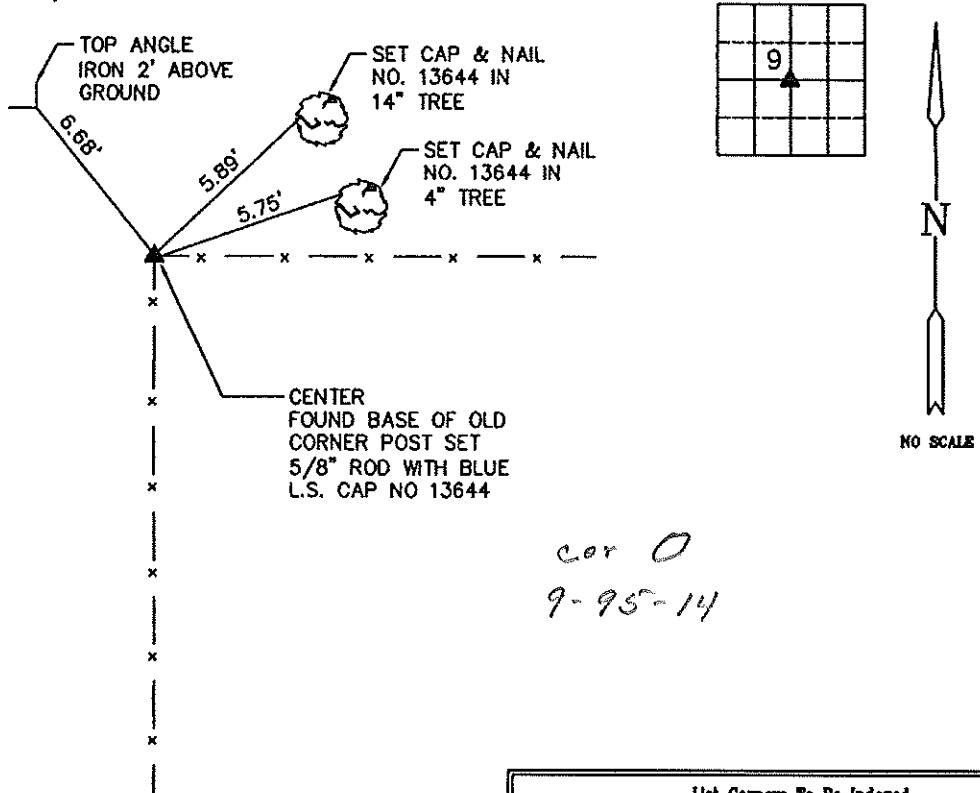
Land Survey Monuments Situated in Section 9, Township 95N, Range 14W, of the Fifth Principle Meridian, CHICKASAW County, Iowa  
 Previously Recorded in NO RECORD CERTIFICATE in County Recorder's Office  
(book, page, document number, etc.)

(Show reason for preparing this certificate, the evidence and detailed procedures used in establishing the corner positions and monumentation found or placed.)

Monument Description and Remarks: CENTER - FOUND BASE OF OLD CORNER POST SET 5/8" ROD WITH BLUE L.S. CAP NO. 13644 ON NORTH EDGE.

**PLAN-VIEW**

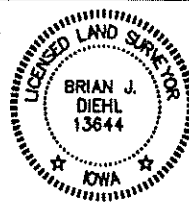
(Show a minimum of three reference ties to durable physical objects, relevant monuments and physical conditions that will enable recovery of the corner.)



Corners	List Corners To Be Indexed		
	Section	Twp	Range
CENTER	9	95	14



**BRIAN J. DIEHL, P.L.S.**  
 LAND SURVEYING SERVICES  
 10 SUMAC  
 MASON CITY, IA 50401  
 641-512-8004  
 bjdiehl@mchs.com



I hereby certify that this land surveying document was prepared and the related survey work was performed by me or under my direct personal supervision and that I am a duly licensed Land Surveyor under the laws of the State of Iowa.

*Brian J. Diehl*  
 Brian J. Diehl  
 License number 13644  
 My license renewal date is December 31, 2011  
 Sheets covered by this book: 3

*September 28, 2011*  
 Date