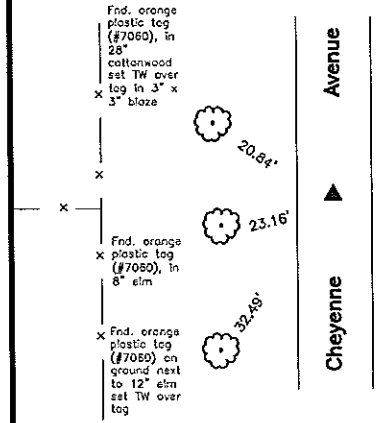


BK 2006-1889

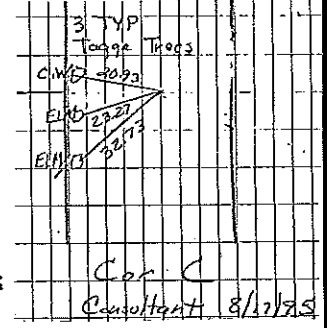
W $\frac{1}{4}$ Cor.

CO ENGR'S RECORD TIES



COR C	IRON PIN	1930	PIRCEC I P 33E OF TE COR. CORNER IT IN POST. IN CORNER
	Measured & dug 4' Down	Found Nothing	
	Set 60d Nail For Const Only		
			11-24-92

Cor C
9-95-14



Monument Description, Remarks, and Plan View:

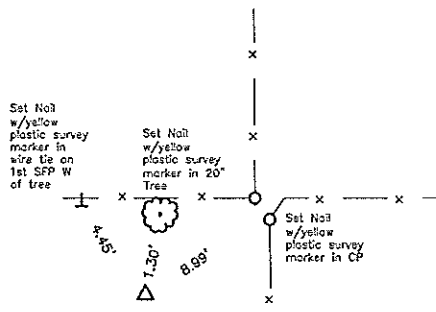
W $\frac{1}{4}$ Cor. - History of Corner =

- 1930 - 'IRON PIN' per Co Engr's ties for Sec 9-95-14.
 - 1989, Nov. 4 - 'Spike Found' per Co Rec's Bk 143 Deeds, Pg 433.
 - 1992, 11-24 - 'Measured & dug 4' Down Found Nothing, set 60d Nail For const only' per Co Engr's ties for Sec 9-95-14.
 - 1195, 8-17 - 'SET $\frac{1}{2}$ " ϕ REBAR W/CAP 7060' per Co Rec's Bk 158, Pg 475.
 - 1995, 11-8 - 'Set $\frac{1}{2}$ " ϕ Rebar w/Cap' per Co Rec's Bk 159, Pg 318.
 - 2002, 10-22 - 'Fd. $\frac{1}{2}$ " ϕ Rebar w/ Orange Plastic Cap LS 7060' per Co Rec's Doc. 2002-2560.
 - 2004, 03-30 - 'Fd. PIN/CAP' per Co Rec's Doc. 2004-0788.
- Co Engr's previous records indicate that corner was monumented with 'IRON PIN and 60d Nail'.
Co Engr's current records indicate that corner is monumented with 'IRON PIN' with ties as shown above.

Corner Recovery = Searched area with metal detector and excavated 0.5' x 0.5' x 0.5' deep hole at cross of ties and found a $\frac{1}{2}$ " ϕ Iron rerod with orange cap remnants, flush with top 0.3' bent S. Tied out rerod and removed, searched again with metal detector and found a bent 60d spike, S25 $^{\circ}$ 48'50"E, 0.61' from rerod, 0.1' deep. Tied out and removed spike and searched again with metal detector and found nothing. Since Co Engr's ties indicate 60d spike was set for construction only, used position of straight portion of rerod. Straightened rerod and replaced in original location 0.4' deep, and placed plastic cap remnants on top. Straightened and replaced 60d spike in it's original location and drove to 0.6' deep. Rerod is 3.0' \pm W of centerline of gravel road N-S and in-line with fence line W and 33' \pm E of fence N-S. Location of monument found matches that of record, monuments found match that of record, and record ties are within reason. Therefore, used rerod as the correct corner. All ties are plumb distance unless indicated otherwise.

This certificate is being prepared because there are no longer three valid ties of record, and there is a change to monumentation of record.

SE Cor. NE $\frac{1}{4}$ SW $\frac{1}{4}$



Cor. J sec 10-95-14

Monument Description, Remarks, and Plan View:

SE Cor. NE $\frac{1}{4}$ SW $\frac{1}{4}$ -

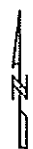
Co Engr's previous and current records do not indicate that corner is monumented.

Corner Recovery = Searched area with metal detector and excavated 1.0' x 1.0' x 0.5' deep hole at S side of old rotten CP and found orange flagging and a 16d nail laying flat. Probed all sides of old CP and hit rock pile around base, none of the rocks appeared to have been set as a corner monument. Therefore, since there is no available record of corner being monumented, set a 3/4" ϕ x 4.0' Alum capped (#14677) iron rerod stamped " $\frac{1}{4}$ $\frac{1}{4}$ Cor" to perpetuate monumentation on-line and equidistance from the S $\frac{1}{4}$ Cor and the Center of Section. Monument is 3.5' \pm S of fence line E-W and 8.5' \pm W of fence line N and 9.5' \pm W of fence line S. Rerod is flush. All ties are plumb distance unless indicated otherwise.

This certificate is being prepared because there are no certificates on file for this corner.

Legend

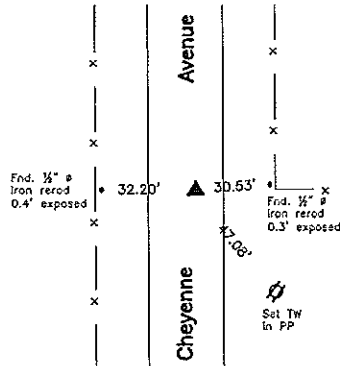
- | | | |
|-------------------------------------------------|----------------------------------------|------------------------------------|
| BC = Nail with Bottle Cap | ID = Inside Diameter | R/W = Iron ROW Nail |
| BP = Brace Post | OD = Outside Diameter | SFP = Steel 'T' Post |
| CP = Corner Post | FP = Power Pole | SW = Nail with Square Metal Washer |
| CMP = Corrugated Metal Pipe | FW = Nail with Plastic Washer | TP = Telephone Pedestal |
| CM = 4" Sq Concrete Monument with | RCP = Reinforced Concrete Pipe | TW = Nail with Round Metal Washer |
| 1/2" ϕ Iron rerod in center (tie to rerod) | RH = Red Head (Nail in wire) | WFP = Wood Fence Post |
| CX = Cut 'X' | ROW = Right of Way | X = X Nails |
| GP = Gate Post | RW = Nail with Reflective Round Washer | |



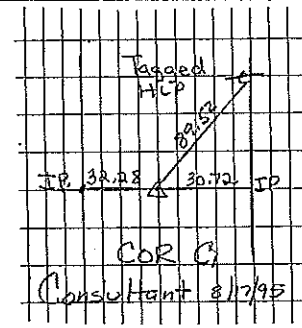
BK 2006-1889

NW Cor. SW $\frac{1}{4}$ NW $\frac{1}{4}$

CO ENGR'S RECORD TIES



Cor. C1
9-95-14



Cor C,	Consultant	Set	JP 1/2 way
	between	NE corner	and E 1/4 corner

Monument Description, Remarks, and Plan View:

NW Cor. SW $\frac{1}{4}$ NW $\frac{1}{4}$ -- History of Corner =

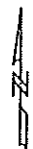
Co Engr's previous records do not indicate that corner was monumented.
Co Engr's current records indicate that corner is monumented with 'Consultant Set 1/2 IP w Cap' with ties as shown above.

Corner Recovery = Searched area with metal detector and excavated 0.5' x 0.5' x 0.6' deep hole at magnetic reading and near cross of two remaining ties and found a 1/2" ø orange capped (#7060) iron rod, 0.5' deep in ACC road. Monument is 3.0'± E of centerline of ACC road N-S and 3.8'± N of fence line remnants E. Location of monument found matches that of record, monument found matches that of record, record ties are within reason and corner was established using accepted PLSS methods. Therefore, filled in hole in ACC and set survey mark nail over rod to raise up monumentation and used as the correct corner. Survey mark nail is flush in ACC. All ties are plumb distance unless indicated otherwise.

This certificate is being prepared because there are no longer three valid ties of record and there is a change to monumentation of record.

Legend

- | | | |
|----------------------------------------|----------------------------------------|------------------------------------|
| BC = Nail with Bottle Cap | ID = Inside Diameter | R/W = Iron ROW Rail |
| BP = Brace Post | OD = Outside Diameter | SFP = Steel 'I' Post |
| CP = Corner Post | PP = Power Pole | SW = Nail with Square Metal Washer |
| CMP = Corrugated Metal Pipe | PW = Nail with Plastic Washer | TP = Telephone Pedestal |
| CH = 4" Sq Concrete Monument with | RCP = Reinforced Concrete Pipe | TW = Nail with Round Metal Washer |
| 1/2" ø Iron rod in center (tie to rod) | RH = Red Head (Nail in wire) | WFP = Wood Fence Post |
| CX = Cut 'x' | RW = Right of Way | X = X Nails |
| GP = Gate Post | RW = Nail with Reflective Round Washer | |



UNITED STATES PUBLIC LAND SURVEY CORNER CERTIFICATE

OF 4

Land Survey Monuments situated in Section 10, Township 95 North, Range 14 West, of the Fifth Principal Meridian, CHICKASAW County, Iowa.
 Previously recorded in NONE in County Recorder's Office.
(book, page, document number, etc.)

(Show reason for preparing this certificate, the evidence and detailed procedures used in establishing the corner positions and monumentation found or placed.)

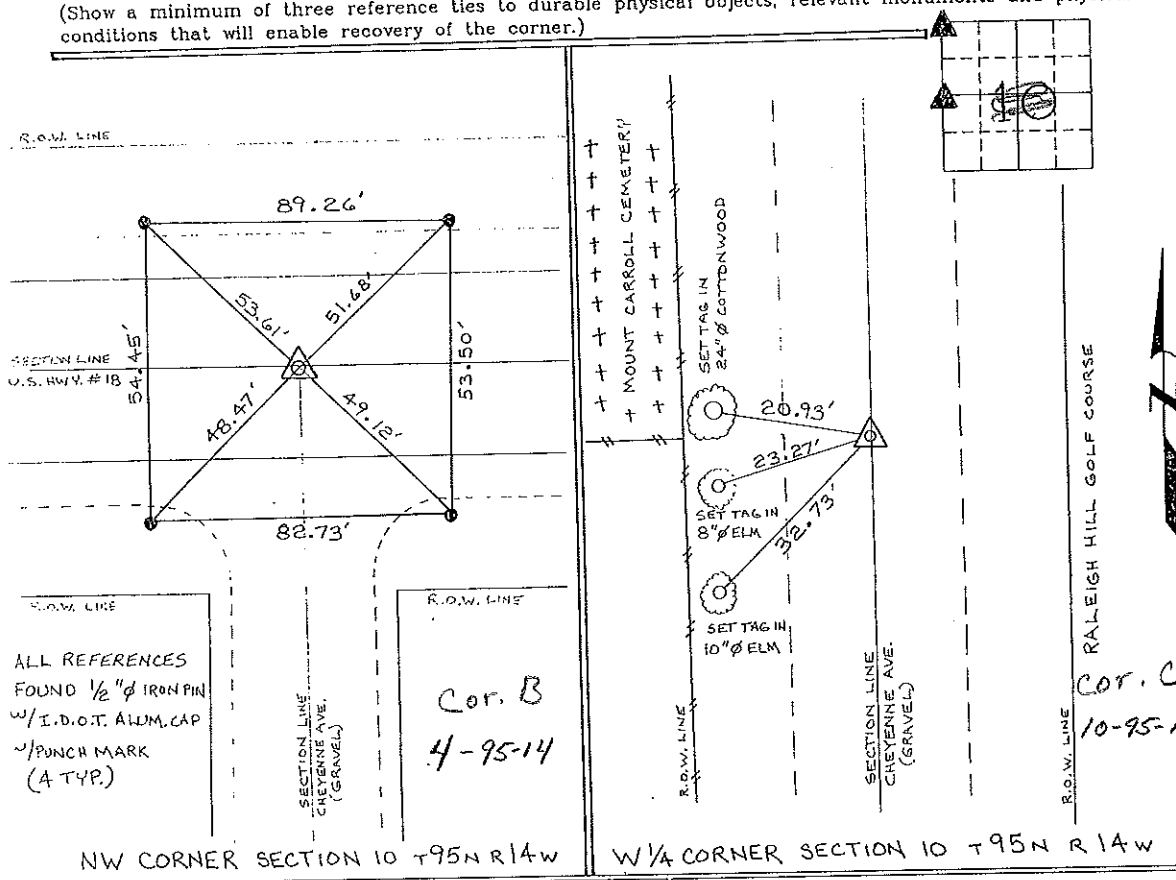
Monument Description and Remarks: NW CORNER SECTION 10 T95N R14W:
FOUND I.D.O.T. ALUMINUM MONUMENT @ JUNCTION OF U.S. HWY. 18 & CHEYENNE AVE.

W 1/4 CORNER SECTION 10 T95N R14W: SET 1/2" Ø REBAR W/CAP 7060 33 FT. EAST OF R.O.W. & EAST-WEST CORNER POST, INFORMATION AS TO PREVIOUS LOCATION FROM COUNTY ENGINEER'S RECORDS & PREVIOUS SURVEY.

*Section 4-95-14
 As referred to in
 Engr. Tie Book*

PLAN - VIEW

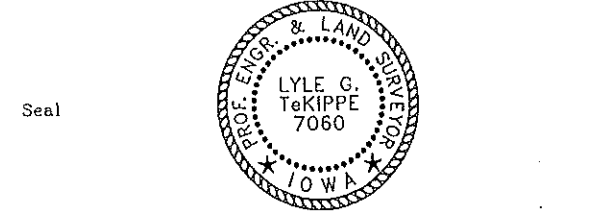
(Show a minimum of three reference ties to durable physical objects, relevant monuments and physical conditions that will enable recovery of the corner.)



ALL REFERENCES FOUND 1/2" Ø IRON PIN W/I.D.O.T. ALUM. CAP 1/4 PUNCH MARK (A TYP.)

I hereby certify that the survey work was completed and this certificate was prepared by me or under my direct personal supervision and that I am a duly registered land surveyor under the laws of the state of Iowa.

Signature: Lyle G. TeKippe
 Lyle G. TeKippe
 Date: 8-17-95 Reg. No. 7060
 My Registration Renewal Date is December 31, 1996



List Corners to be Indexed			
Corners	Section	Twp.	Range
W 1/4	10	95 N	14 W
C	9-95-14		
NW	10	95 N	14 W
B	4-95-14		

158-475

Placed Tie all
 County Engineers