

PREPARED BY: BRIAN J. DIEHL LS 13644 10 SUMAC MASON CITY, IOWA 50401 -- (641) 512-8004

SLST 9-90

**UNITED STATES PUBLIC LAND SURVEY CORNER CERTIFICATE**

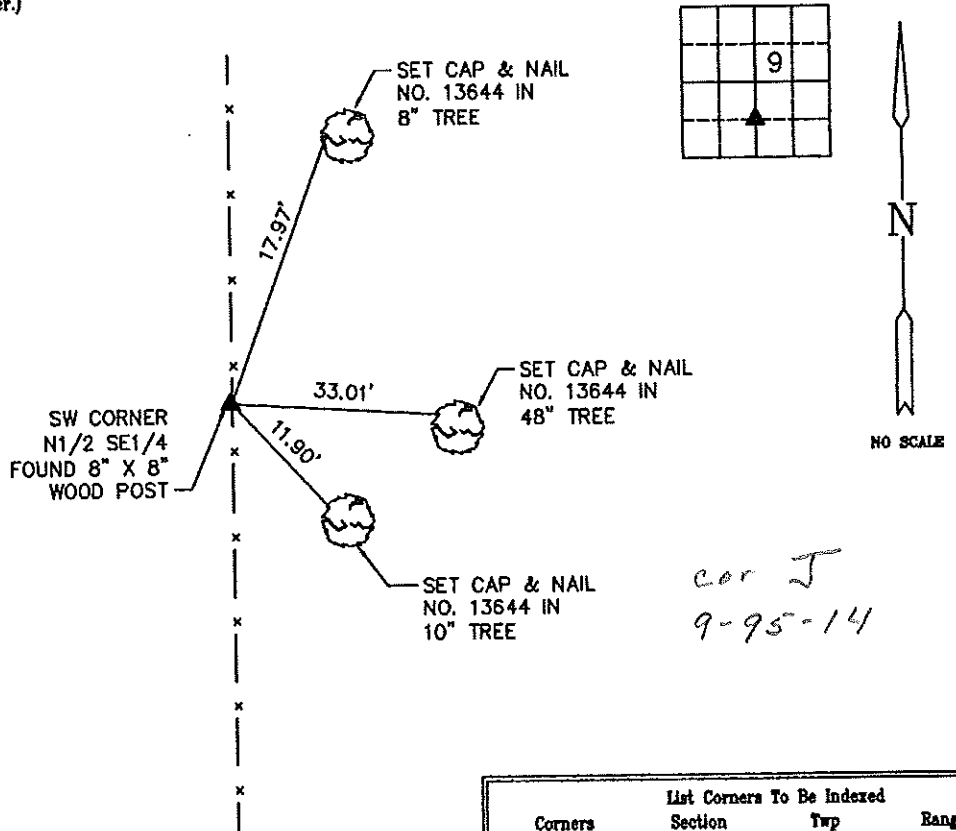
Land Survey Monuments Situated in Section 9, Township 95N, Range 14W, of the Fifth Principle Meridian, CHICKASAW County, Iowa  
 Previously Recorded in NO RECORD CERTIFICATE in County Recorder's Office  
(book, page, document number, etc.)

(Show reason for preparing this certificate, the evidence and detailed procedures used in establishing the corner positions and monumentation found or placed.)

Monument Description and Remarks: SW CORNER N1/2 SE1/4 - FOUND 8" X 8" WOOD POST 6" ABOVE GROUND ON LINE AND EQUI-DISTANT FROM S1/4 AND CENTER SECTION. SET CAP AND NAIL NO. 13644 ON TOP CENTER OF POST.

**PLAN--VIEW**

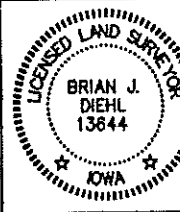
(Show a minimum of three reference ties to durable physical objects, relevant monuments and physical conditions that will enable recovery of the corner.)



Corners	Section	Twp	Range
SW CORNER N1/2 SE1/4	9	95	14



**BRIAN J. DIEHL, P.L.S.**  
 LAND SURVEYING SERVICES  
 10 SUMAC  
 MASON CITY, IA 50401  
 641-512-8004  
 bjdiehl@mchsl.com



I hereby certify that this land surveying document was prepared and the related survey work was performed by me or under my direct personal supervision and that I am a duly licensed Land Surveyor under the laws of the State of Iowa.

*[Signature]*  
 Brian J. Diehl  
 License number 13644  
 My license renewal date is December 31, 2011  
 Sheets covered by this seal: 3

Date: September 26, 2011