

Chickasaw Co. Recorder
 Cindy Messersmith
Fee Book 2016-0349
 03/16/2016 @0940AM
 SCC SEC COR CERT
 Book Page: # Pages: 1
 Total Fees: \$7.00

PREPARED BY / RETURN TO: KENNETH D. STARK IOWA DEPARTMENT OF TRANSPORTATION 428 43rd ST. SW MASON CITY, IA 50401 641-423-7584

UNITED STATES PUBLIC LAND SURVEY CORNER CERTIFICATE

OF

Land Survey Monuments situated in Section 09^S, Township 95N, Range 14W
 of the Fifth Principal Meridian, CHICKASAW County, Iowa.

Previously recorded in Fee Book 2008-0705 in County Recorder's Office.
(book, page, document number, etc.)

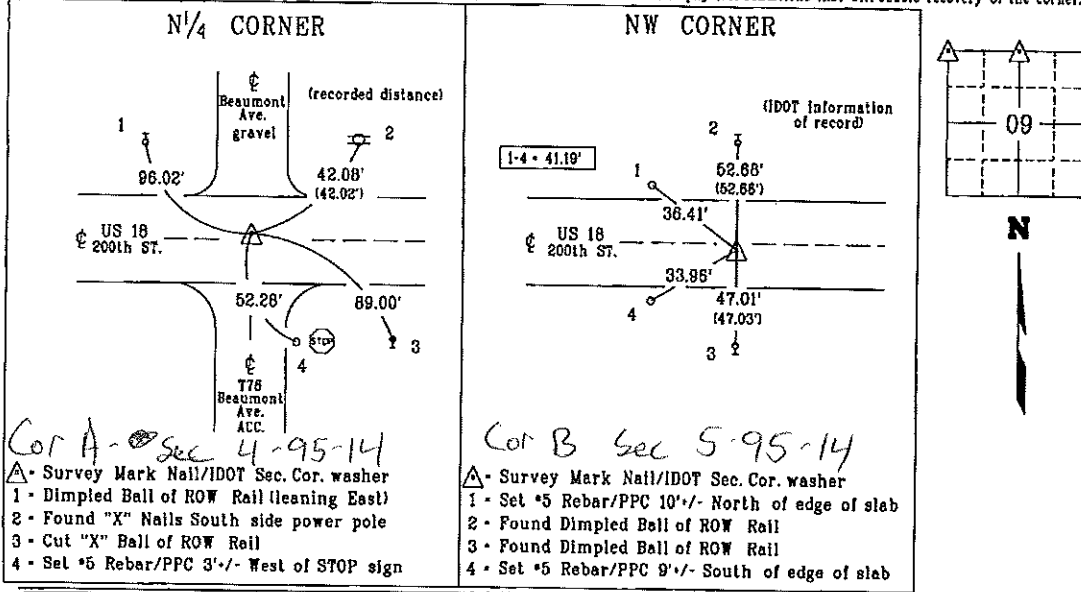
(Show reason for preparing this certificate, the evidence and detailed procedures used in establishing the corner positions and monumentation found or placed.)

Monument Description and Remarks: NW CORNER: Replaced previously found Survey Mark Nail/
IDOT Sec. Cor. washer with a Survey Mark Nail/IDOT Sec. Cor. washer, 0.5' +/- North of US 18 per
previous cert of record Fee Book 2008-0705 after HMA resurfacing project MP-018-2(707)220--76-19.
 Reason for cert: Monumentation and ties have changed.

N¹/₄ CORNER: Replaced previously found Survey Mark Nail/IDOT Sec. Cor. washer with a Survey
Mark Nail/IDOT Sec. Cor. washer, 2.25' +/- South of US 18 per IDOT information of record supplied
by New Hampton Office after HMA resurfacing project MP-018-2(707)220--76-19.
 Reason for cert: Monumentation and ties have changed.

PLAN - VIEW

(Show a minimum of three reference ties to durable physical objects, relevant monuments and physical conditions that will enable recovery of the corner.)



I hereby certify that this land surveying document was prepared and the related survey work was performed by me or under my personal supervision and that I am duly licensed Land Surveyor under the laws of the state of Iowa.

Kenneth D. Stark Date 03-14-16
 Kenneth D. Stark
 License number 10888
 My License renewal date is December 31, 2017
 Pages or sheets covered by this seal. 1

List Corners to be Indexed

Corner	Section	Township	Range
--------	---------	----------	-------

NW CORNER	09	95N	14W
N ¹ / ₄ CORNER	09	95N	14W

PPC - Pink Plastic Cap (reference point)

UNITED STATES PUBLIC LAND SURVEY CORNER CERTIFICATE

OF

Land Survey Monuments situated in Section 09⁴, Township 95N, Range 14W
of the Fifth Principal Meridian, CHICKASAW County, Iowa.

Previously recorded in Fee Book 2008-0705 in County Recorder's Office.
(book, page, document number, etc.)

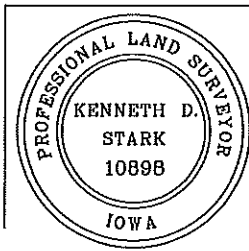
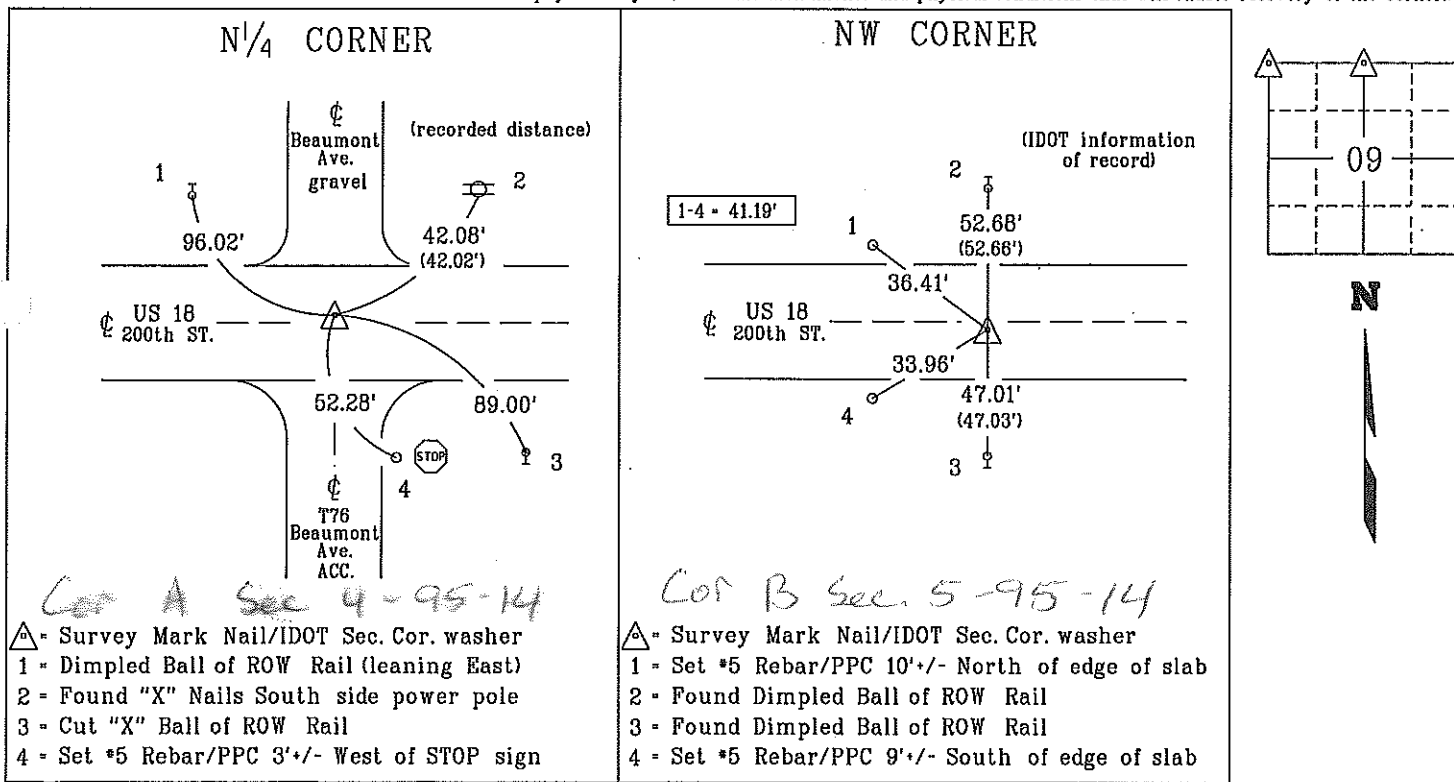
(Show reason for preparing this certificate, the evidence and detailed procedures used in establishing the corner positions and monumentation found or placed.)

Monument Description and Remarks: NW CORNER: Replaced previously found Survey Mark Nail/IDOT Sec. Cor. washer with a Survey Mark Nail/IDOT Sec. Cor. washer, 0.5'+/- North of US 18 per previous cert of record Fee Book 2008-0705 after HMA resurfacing project MP-018-2(707)220--76-19.
Reason for cert: Monumentation and ties have changed.

N¹/₄ CORNER: Replaced previously found Survey Mark Nail/IDOT Sec. Cor. washer with a Survey Mark Nail/IDOT Sec. Cor. washer, 2.25'+/- South of US 18 per IDOT information of record supplied by New Hampton Office after HMA resurfacing project MP-018-2(707)220--76-19.
Reason for cert: Monumentation and ties have changed.

PLAN - VIEW

(Show a minimum of three reference ties to durable physical objects, relevant monuments and physical conditions that will enable recovery of the corner.)



I hereby certify that this land surveying document was prepared and the related survey work was performed by me or under my personal supervision and that I am duly licensed Land Surveyor under the laws of the state of Iowa.

Kenneth D. Stark Date 03-14-16
Kenneth D. Stark
License number 10898
My License renewal date is December 31, 2017
Pages or sheets covered by this seal. 1

List Corners to be Indexed

Corner	Section	Township	Range
NW CORNER	09	95N	14W
N ¹ / ₄ CORNER	09	95N	14W

PPC = Pink Plastic Cap (reference point)

drawn by: cjs 02/16

19-09-95-14

filed by: me, cs
right-of-way