

UNITED STATES PUBLIC LAND SURVEY CORNER CERTIFICATE

OF

Land Survey Monuments situated in Section 10³, Township 95N, Range 14W
of the Fifth Principal Meridian, CHICKASAW County, Iowa.

Previously recorded in NA in County Recorder's Office.
(book, page, document number, etc.)

(Show reason for preparing this certificate, the evidence and detailed procedures used in establishing the corner positions and monumentation found or placed.)

Monument Description and Remarks: NW CORNER: Replaced previously found SMN/IDOT washer with a SMN/IDOT Sec. Cor. washer, 3.1'+/- North of US 18 per IDOT information of record supplied by New Hampton Office after HMA resurfacing project MP-018-2(707)220--76-19.

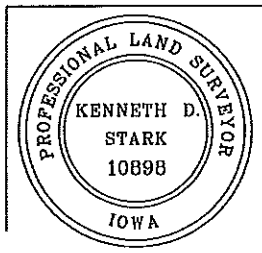
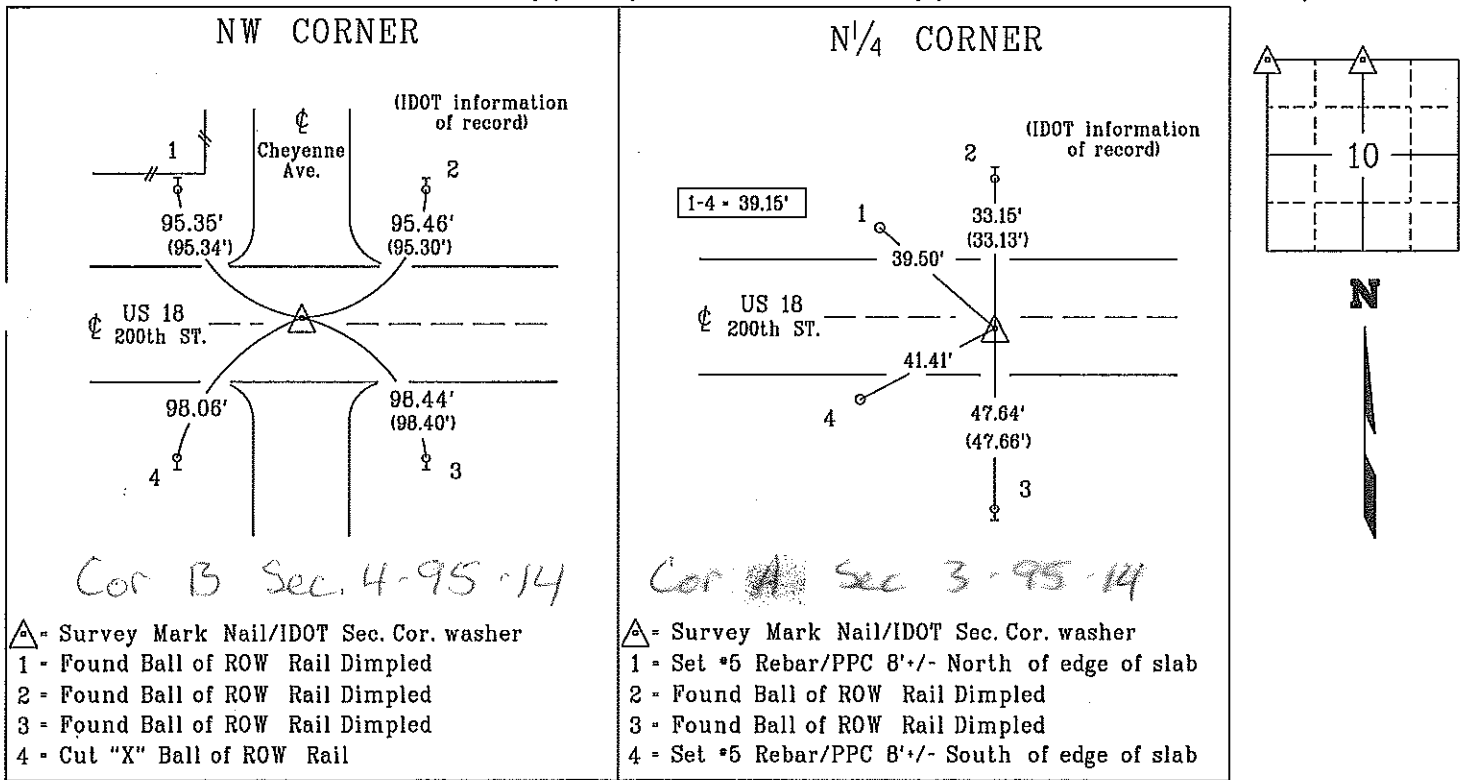
Reason for cert: Monumentation and ties have changed.

N¹/₄ CORNER: Replaced previously found SMN/IDOT washer with a SMN/IDOT Sec. Cor. washer, 1.2'+/- South of US 18 per IDOT information of record supplied by New Hampton Office after HMA resurfacing project MP-018-2(707)220--76-19.

Reason for cert: Monumentation and ties have changed.

PLAN - VIEW

(Show a minimum of three reference ties to durable physical objects, relevant monuments and physical conditions that will enable recovery of the corner.)



I hereby certify that this land surveying document was prepared and the related survey work was performed by me or under my personal supervision and that I am duly licensed Land Surveyor under the laws of the state of Iowa.

Kenneth D. Stark 03-14-16
Kenneth-D. Stark Date
License number 10898
My License renewal date is December 31, 2017
Pages or sheets covered by this seal. 1

List Corners to be Indexed			
Corner	Section	Township	Range
NW CORNER	10	95N	14W
N ¹ / ₄ CORNER	10	95N	14W
SMN - Survey Mark Nail			
PPC - Pink Plastic Cap			

drawn by: cts 02/16

19-10-95-14

filed by: me, cs
right-of-way

UNITED STATES PUBLIC LAND SURVEY CORNER CERTIFICATE

OF 4

Land Survey Monuments situated in Section 10, Township 95 North, Range 14 West, of the Fifth Principal Meridian, CHICKASAW County, Iowa.
 Previously recorded in NONE in County Recorder's Office.
(book, page, document number, etc.)

(Show reason for preparing this certificate, the evidence and detailed procedures used in establishing the corner positions and monumentation found or placed.)

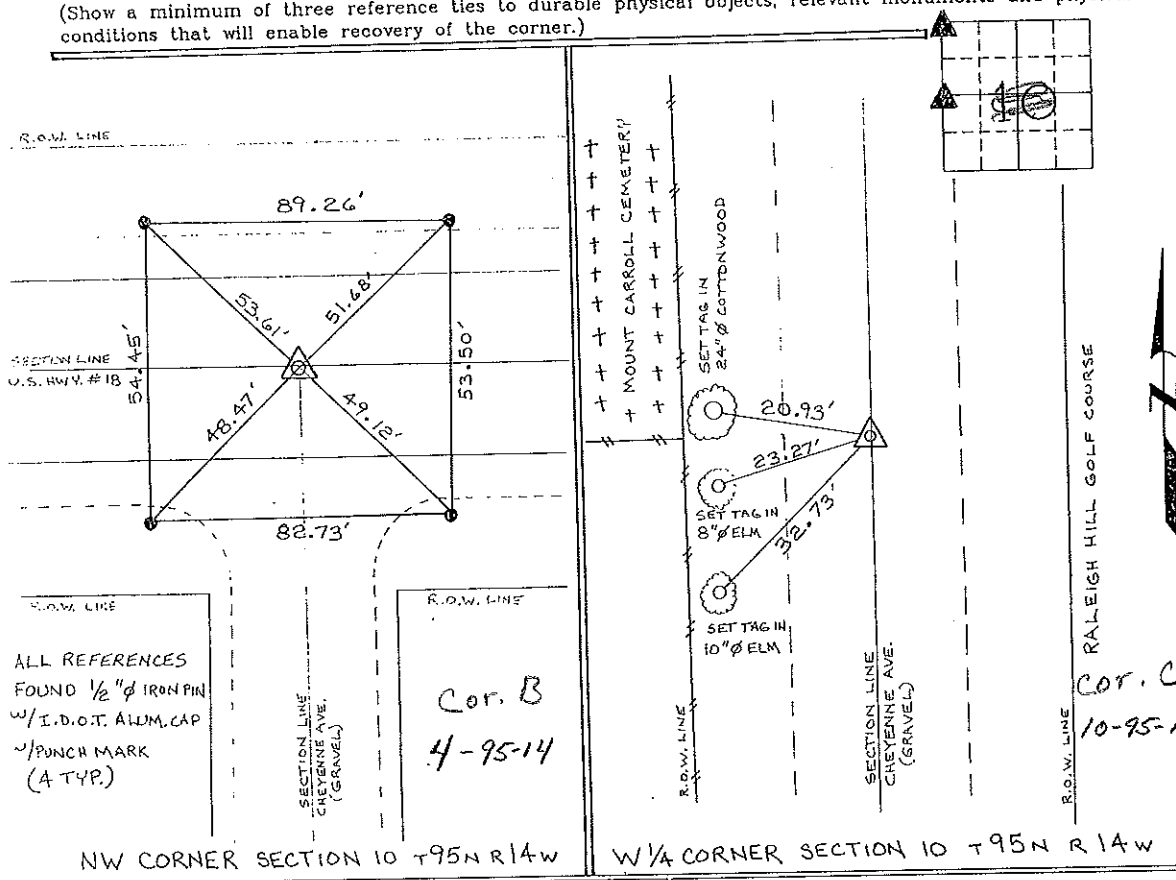
Monument Description and Remarks: NW CORNER SECTION 10 T95N R14W:
FOUND I.D.O.T. ALUMINUM MONUMENT @ JUNCTION OF U.S. HWY. 18 & CHEYENNE AVE.

W 1/4 CORNER SECTION 10 T95N R14W: SET 1/2" Ø REBAR W/CAP 7060 33 FT. EAST OF R.O.W. & EAST-WEST CORNER POST, INFORMATION AS TO PREVIOUS LOCATION FROM COUNTY ENGINEER'S RECORDS & PREVIOUS SURVEY.

*Section 4-95-14
 As referred to in
 Engr. Tie Book*

PLAN - VIEW

(Show a minimum of three reference ties to durable physical objects, relevant monuments and physical conditions that will enable recovery of the corner.)



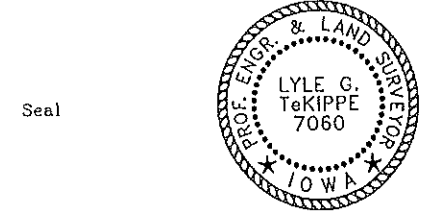
ALL REFERENCES FOUND 1/2" Ø IRON PIN W/ I.D.O.T. ALUM. CAP 1/4 PUNCH MARK (A TYP.)

Cor. B
 4-95-14

NW CORNER SECTION 10 T95N R14W W 1/4 CORNER SECTION 10 T95N R14W

I hereby certify that the survey work was completed and this certificate was prepared by me or under my direct personal supervision and that I am a duly registered land surveyor under the laws of the state of Iowa.

Signature: Lyle G. TeKippe
 Lyle G. TeKippe
 Date: 8-17-95 Reg. No. 7060
 My Registration Renewal Date is December 31, 1996



List Corners to be Indexed			
Corners	Section	Twp.	Range
W 1/4	10	95 N	14 W
C	9-95-14		
NW	10	95 N	14 W
B	4-95-14		

Placed Tie all

158-475

County Engineers