

UNITED STATES PUBLIC LAND SURVEY CORNER CERTIFICATE

OF

Land Survey Monuments situated in Section 10, Township 95 North, Range 13 West, of the Fifth Principal Meridian, CHICKASAW County, Iowa.
 Previously recorded in NONE in County Recorder's Office.
(book, page, document number, etc.)

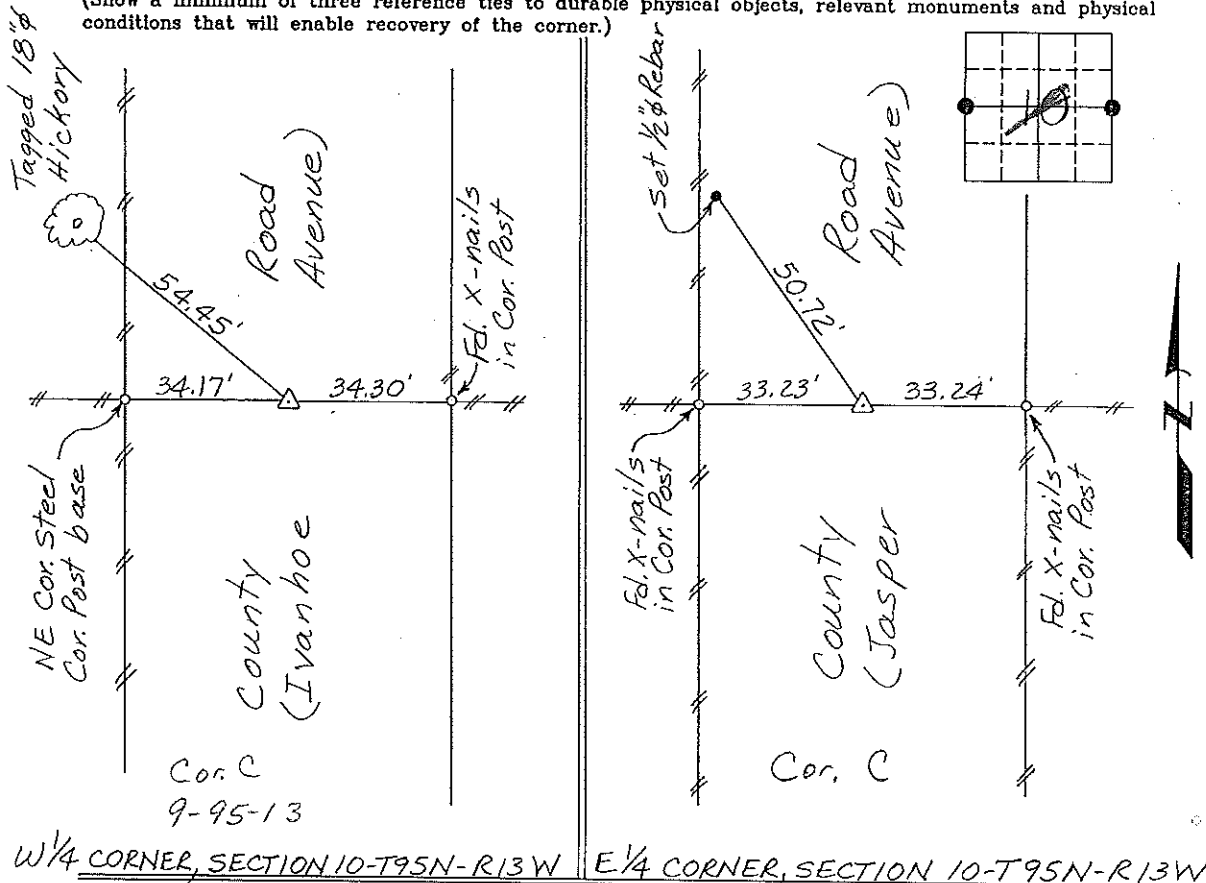
*Section 9-95-13
 As referred to in
 Engr Tie Book*

(Show reason for preparing this certificate, the evidence and detailed procedures used in establishing the corner positions and monumentation found or placed.)

Monument Description and Remarks: W 1/4 CORNER, SECTION 10-T95N-R13W:
Found 5/8" Rebar with cap # 7549.
E 1/4 CORNER, SECTION 10-T95N-R13W: Found 5/8" Rebar with
cap # 7549.

PLAN - VIEW

(Show a minimum of three reference ties to durable physical objects, relevant monuments and physical conditions that will enable recovery of the corner.)



W 1/4 CORNER, SECTION 10-T95N-R13W E 1/4 CORNER, SECTION 10-T95N-R13W

I hereby certify that the survey work was completed and this certificate was prepared by me or under my direct personal supervision and that I am a duly registered land surveyor under the laws of the state of Iowa.

Signature: Gary L. Casady
 Gary L. Casady

Date: 12-14-94 Reg. No. 12532
 My Registration Renewal Date is December 31, 1994

Seal



Corners	Section	Twp.	Range
W 1/4	10	95N	13W
	Corner C 9-95-13		
E 1/4	10	95N	13W
	Corner C 10-95-13		

*Placed in Tie Book
 1/18/95*