

Chickasaw Co. Recorder
 Cindy Messersmith
Fee Book 2014-0867
 07/08/2014 @1100AM
 SCC SEC COR CERT
 Book: Page: # Pages: 1
 Total Fees: \$7.00

Prepared by & Return to: Herold - Reicks Surveying, 10 East Main Street, New Hampton, IA 50659, Ph. 641-994-2725

UNITED STATES PUBLIC LAND SURVEY CORNER CERTIFICATE

Land Survey Monuments situated in Section 3, Township 95 North, Range 13 West of the Fifth Principal Meridian, Chickasaw County, Iowa. Previously recorded in Bk. 165, Pg. 17 in the County Recorder's office.

This certificate is being prepared in compliance with Iowa Code Chapter 355.11 because:

- There is no certificate on file for this corner.
- There are no longer three valid ties of record.
- There are changes to reference ties of record.
- There is change of monumentation of record.
- To clarify description of record monument (ties).

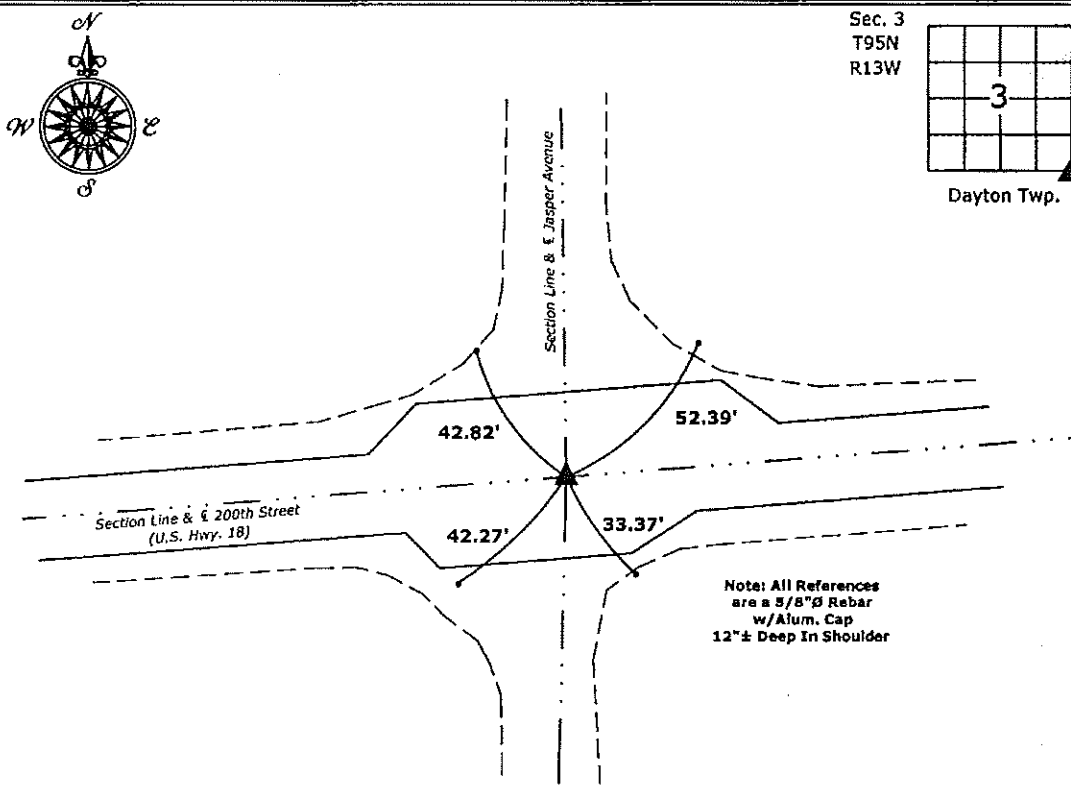
Monument Description and Remarks:

SE Corner: Set Survey Mark Nail w/Stainless Steel Washer PLS 15525, position established from ties obtained from the Iowa Department of Transportation, As-Built Plans Project No. FR-18-7(31)--26-19

The previous Monument was missing after an HMA Overlay Project.

PLAN - VIEW

(Show a minimum of three reference ties to durable physical objects, relevant monuments and physical conditions that will enable recovery of the corner.)



SE Corner Section 3-95-13
 Set Survey Mark Nail w/Stainless Steel Washer PLS 15525



I hereby certify that this land surveying document was prepared and the related survey work was performed by me or under my direct personal supervision and that I am a duly licensed Land Surveyor under the laws of the State of Iowa.

Paul R. Herold 6-26-14
 Paul R. Herold Date:
 License number 15525
 My license renewal date is December 31, 2014.
 Sheets covered by this seal: Individual sheet only

List Corners to be Indexed			
Corners	Section	Twp.	Range
SE	3	95	13

Project Number: 2014-045
 FB: Chickasaw County 6, Pgs. 31-34

File: S:_CSD Projects\County Control Systems\CHICKASAW\CHICK-27\CHICK-27.dwg, 6/26/2014 11:17:03 AM

Section 3-95-13
As referred to in
Engr. Trc Book

TEKIPPE ENGINEERING, P.C., 128 South Vine Street, West Union, Iowa 52175 Phone (319) 422-5131

UNITED STATES PUBLIC LAND SURVEY CORNER CERTIFICATE

OF

Land Survey Monuments situated in Section 2, Township 95 North, Range 13 West, of the Fifth Principal Meridian, CHICKASAW County, Iowa. Previously recorded in NONE in County Recorder's Office.

(book, page, document number, etc.)

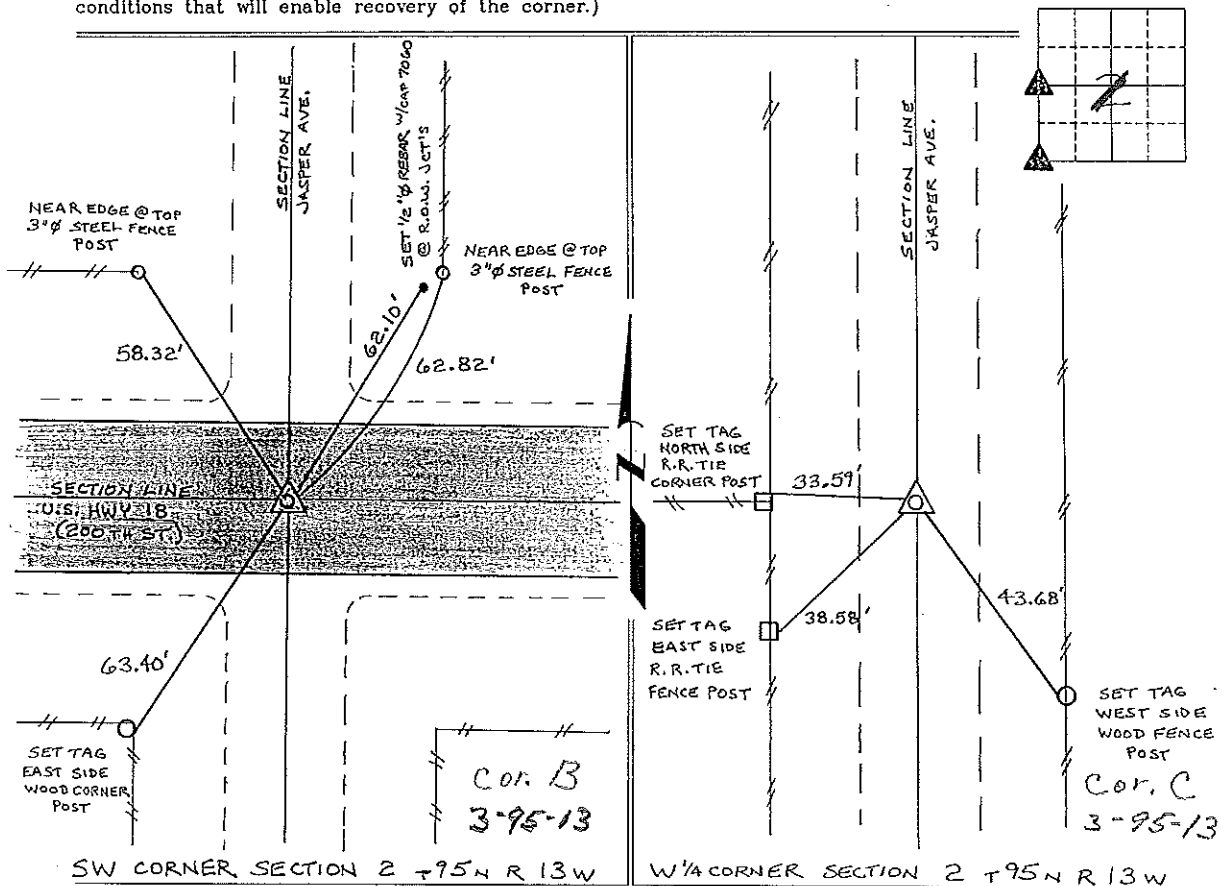
(Show reason for preparing this certificate, the evidence and detailed procedures used in establishing the corner positions and monumentation found or placed.)

Monument Description and Remarks: SW CORNER SECTION 2 T95N R13W: FOUND IOWA D.O.T. ALUMINUM MONUMENT.

W1/4 CORNER SECTION 2 T95N R13W: FOUND 5/8" Ø IRON PIN, FROM INFORMATION ON A SURVEY AND PLAT MADE BY ROGER D. HANSON, RECORDED MARCH 14, 1967, DEEDS BOOK 94, PAGE 377-378

PLAN - VIEW

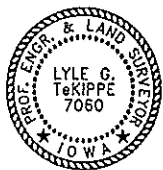
(Show a minimum of three reference ties to durable physical objects, relevant monuments and physical conditions that will enable recovery of the corner.)



SW CORNER SECTION 2 T95N R13W

W1/4 CORNER SECTION 2 T95N R13W

I hereby certify that this land surveying document was prepared and the related survey work was performed by me or under my direct personal supervision and that I am a duly licensed Land Surveyor under the laws of the State of Iowa.



Lyle G. Tekippe 7-14-97
Lyle G. Tekippe Date
License number 7060
My license renewal date is December 31, 1998.
Sheets covered by this seal: Individual

List Corners to be Indexed

Corners	Section	Twp.	Range
SW	2	95N	13W
Cor B	3-95-13	(DAYTON)	13W
W1/4	2	95N	13W
Cor C	3-95-13	(DAYTON)	

Placed in the book 8/12/97

"County Engineer's Copy"