

Section 1-95-13
As referred to in
Engr. Tie Book

FILED 2003-2391
RECORDER'S OFFICE
CHICKASAW COUNTY, IOWA
2003 JUL 29 AM 9 03
CINDY MESSERSMITH
COUNTY RECORDER

TEKIPPE ENGINEERING, P.C., 128 South Vine Street, West Union, Iowa 52175 Phone (563) 422-5131

UNITED STATES PUBLIC LAND SURVEY CORNER CERTIFICATE

OF
Land Survey Monuments situated in Section 12, Township 95 North, Range 13 West of the Fifth Principal Meridian, CHICKASAW County, Iowa.
Previously recorded in (1) Bk 151 Pg 262 (2) Bk 157 Pg 264 in County Recorder's Office.
(book, page, document number, etc.)

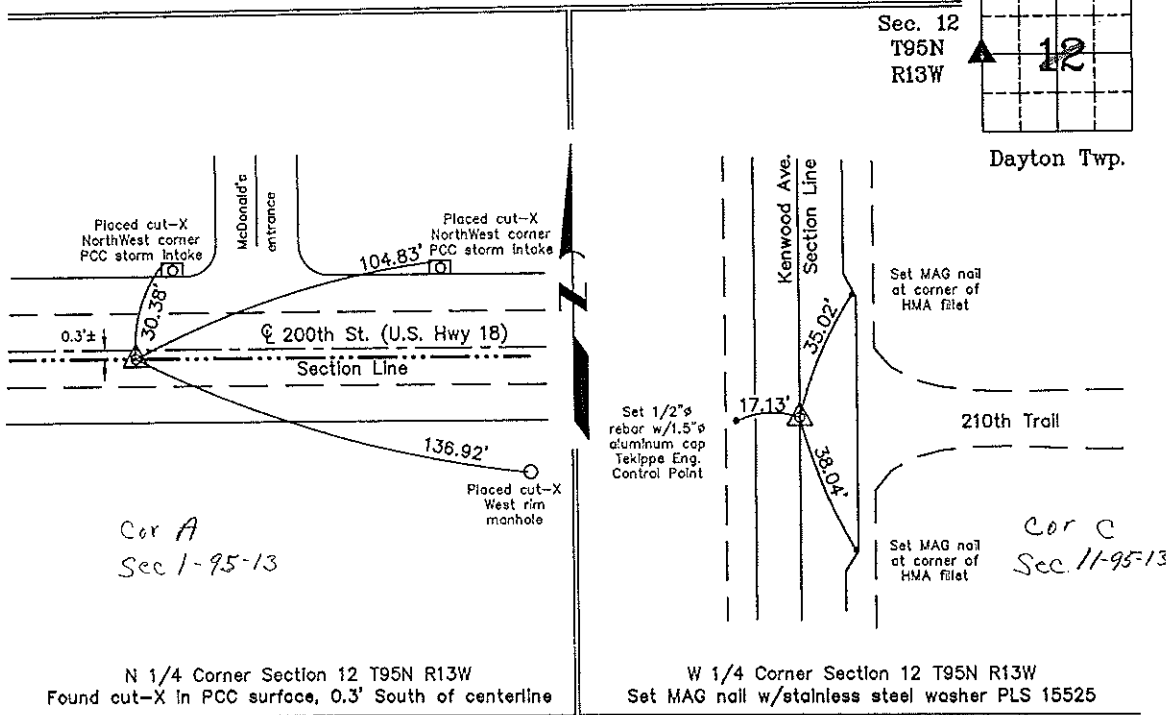
(Show reason for preparing this certificate, the evidence and detailed procedures used in establishing the corner positions and monumentation found or placed.)

Monument Description and Remarks: **(1) N 1/4 Corner Section 12 T95N R13W:** Found cut-X in PCC surface with information obtained from the previous Section Corner Certificate recorded in the Chickasaw County Recorder's Office in Deed Book 151, Page 262. All previous reference ties were missing. Three reference ties were added.
(2) W 1/4 Corner Section 12 T95N R13W: The previous monument noted in the Chickasaw County Recorder's Office in Deed Book 157, Page 264 was covered with a HMA overlay as part of the relocation of U. S. Hwy. 63. All previous reference ties were destroyed. Set MAG nail w/stainless steel washer PLS 15525 using coordinates from a previous GPS survey prior to construction. Three reference ties were added.

PLAN - VIEW

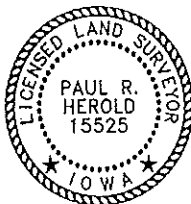
Project Number 02093.LS
FB. New Hampton 1 PG. 1-4

(Show a minimum of three reference ties to durable physical objects, relevant monuments and physical conditions that will enable recovery of the corner.)



N 1/4 Corner Section 12 T95N R13W
Found cut-X in PCC surface, 0.3' South of centerline

W 1/4 Corner Section 12 T95N R13W
Set MAG nail w/stainless steel washer PLS 15525



I hereby certify that this land surveying document was prepared and the related survey work was performed by me or under my direct personal supervision and that I am a duly licensed Land Surveyor under the laws of the State of Iowa.

Paul R. Herold 7-25-03
Paul R. Herold Date
License number 15525
My license renewal date is December 31, 2004.
Sheets covered by this seal: Individual

List Corners to be Indexed			
Corners	Section	Twp.	Range
N 1/4	12	95N	13W
W 1/4	12	95N	13W

Filed 8-26-03

X:\Section Corners\Sec. 12\12-95-13ck.dwg

County Engineer
7/29/03

UNITED STATES PUBLIC LAND SURVEY CORNER CERTIFICATE

OF

Land Survey Monuments situated in Section 12, Township 95 North, Range 13 West, of the Fifth Principal Meridian, CHICKASAW County, Iowa.
 Previously recorded in NONE in County Recorder's Office.
(book, page, document number, etc.)

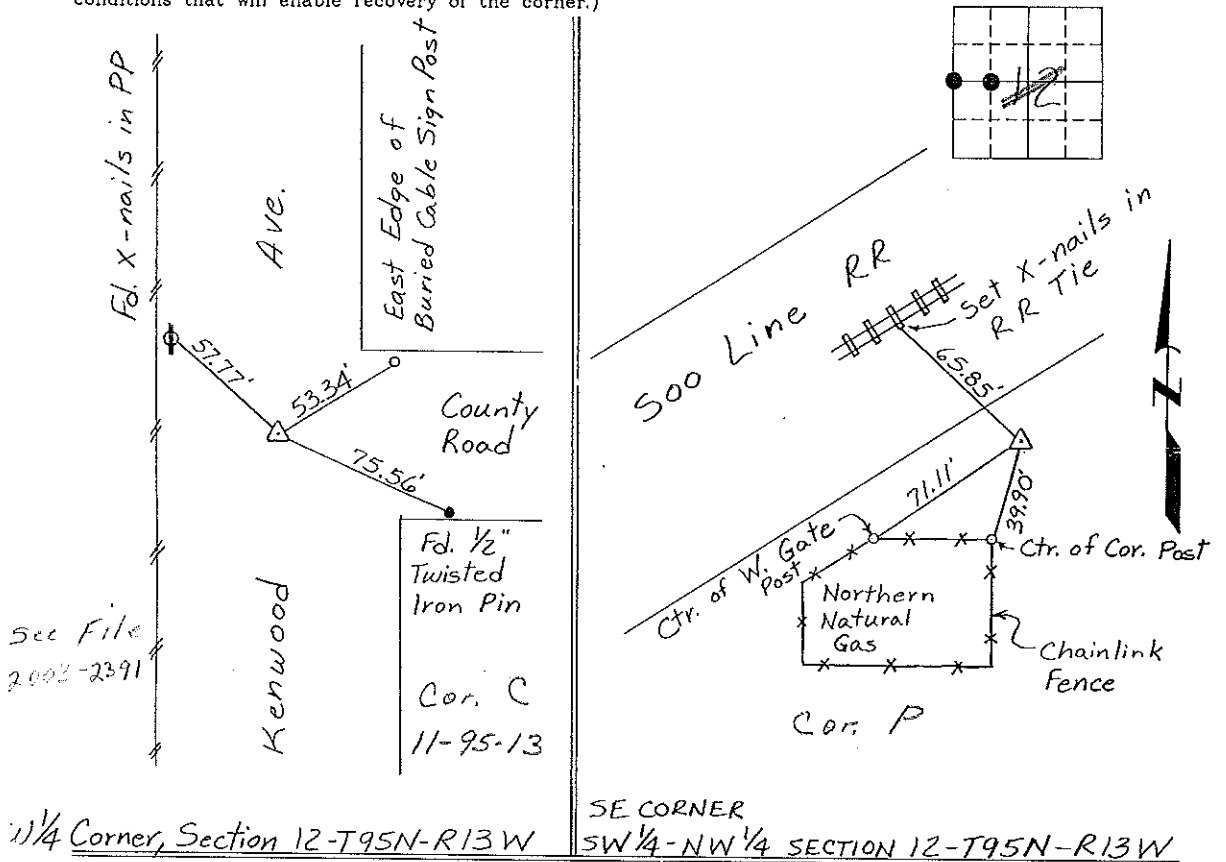
*Section 11-95-13
 As referred to in
 Engr. Tie Book*

(Show reason for preparing this certificate, the evidence and detailed procedures used in establishing the corner positions and monumentation found or placed.)

Monument Description and Remarks: W 1/4 CORNER, SECTION 12-T95N-R13W:
Found Cut 'X' in pavement.
SE CORNER, SW 1/4-NW 1/4, SECTION 12-T95N-R13W: Set 1/2" Rebar
with cap midway between W 1/4 corner & Center of Section.

PLAN - VIEW

(Show a minimum of three reference ties to durable physical objects, relevant monuments and physical conditions that will enable recovery of the corner.)



W 1/4 Corner, Section 12-T95N-R13W

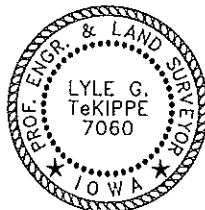
SE CORNER SW 1/4-NW 1/4 SECTION 12-T95N-R13W

I hereby certify that the survey work was completed and this certificate was prepared by me or under my direct personal supervision and that I am a duly registered land surveyor under the laws of the state of Iowa.

Signature: Lyle G. TeKippe
 Lyle G. TeKippe
 Date: 2-17-95 Reg. No. 7060
 My Registration Renewal Date is December 31, 1996

List Corners to be Indexed

Corners	Section	Twp.	Range
W 1/4	12	95N	13W
Cor. C	11-95-13		
SE COR.			
SW 1/4-NW 1/4	12	95N	13W
Cor. 11-95-13			



Seal

Placed in Tie Book 3/24/95