

Prepared by & Return to: Herold - Reicks Surveying, 10 East Main Street, New Hampton, IA 50659, Ph. 641-394-2725

### United States Public Land Survey Corner Certificate

Land Survey Monument situated in Section ~~12~~<sup>11</sup>, Township **95** North, Range **13** West of the Fifth Principal Meridian, **Chickasaw** County, Iowa. Not previously recorded in County Recorder's Office.

This certificate is being prepared in compliance with Iowa Code Chapter 355.11 because:

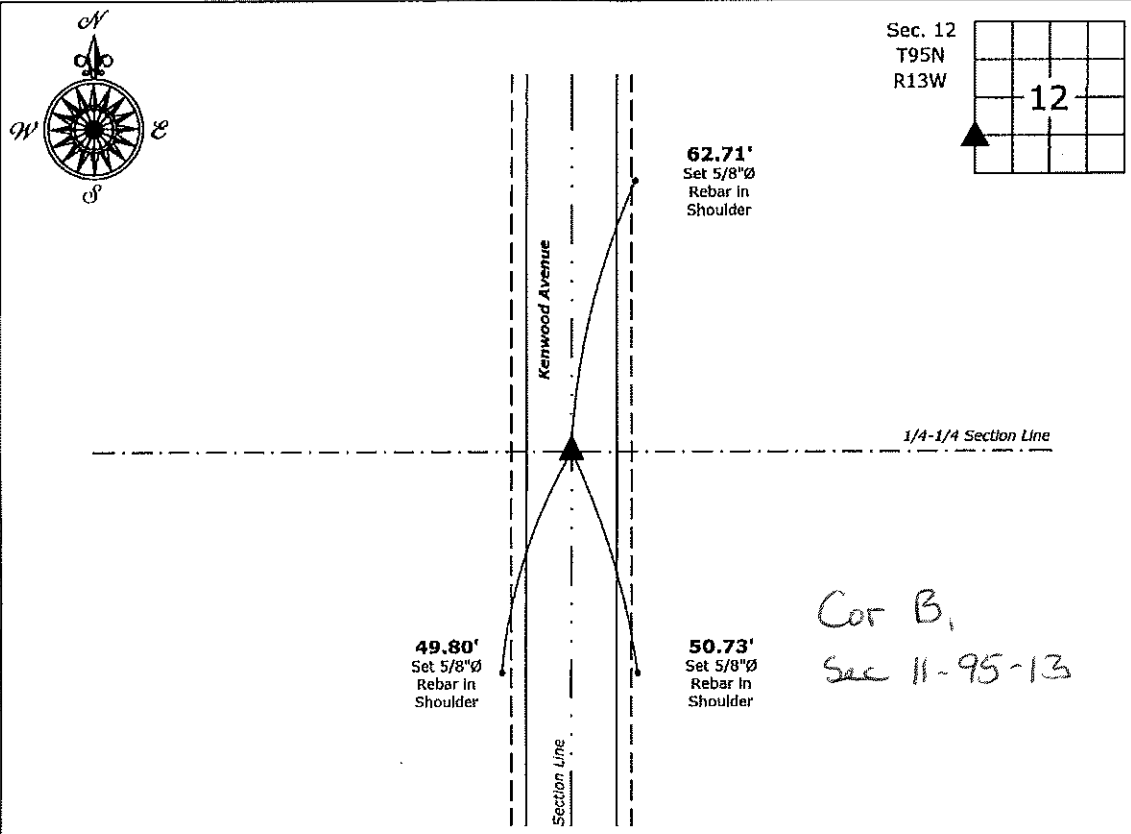
- There is no certificate on file for this corner.
- There are no longer three valid ties of record.
- There are changes to reference ties of record.
- There is change of monumentation of record.
- To clarify description of record monument (ties).

**Monument Description and Remarks:**

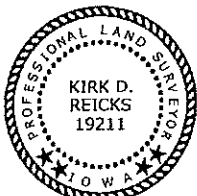
**NW Corner SW 1/4 - SW 1/4:** Set Survey Marker Nail with Stainless Steel Washer PLS 19211 equidistant and online between the West 1/4 and SW Corners of said Section.

### Plan View

(Show a minimum of three reference ties to durable physical objects, relevant monuments and physical conditions that will enable recovery of the corner.)



**NW Corner SW1/4 - SW1/4 of Section 12-95-13**  
 Set Survey Marker Nail w/Stainless Steel Washer PLS 19211



I hereby certify that this land surveying document was prepared and the related survey work was performed by me or under my direct personal supervision and that I am a duly licensed Land Surveyor under the laws of the State of Iowa.

*Kirk D. Reicks* 4-20-17  
 Kirk D. Reicks Date:

License number 19211  
 My license renewal date is December 31, 2018.  
 Sheets covered by this seal: Individual sheet only

List Corner to be Indexed			
Corner	Section	Twp.	Range
NW-SW-SW	12	95	13
Project Number: 2017-014			
FB: New Hampton 2, Pg. 45			

File: S:\\_C3D Projects\County Control Systems\CHICKASAW\CHICK-28 (New Hampton)\CHICK-28-2017.dwg, 4/20/2017 11:12:11 AM