

UNITED STATES PUBLIC LAND SURVEY CORNER CERTIFICATE

OF

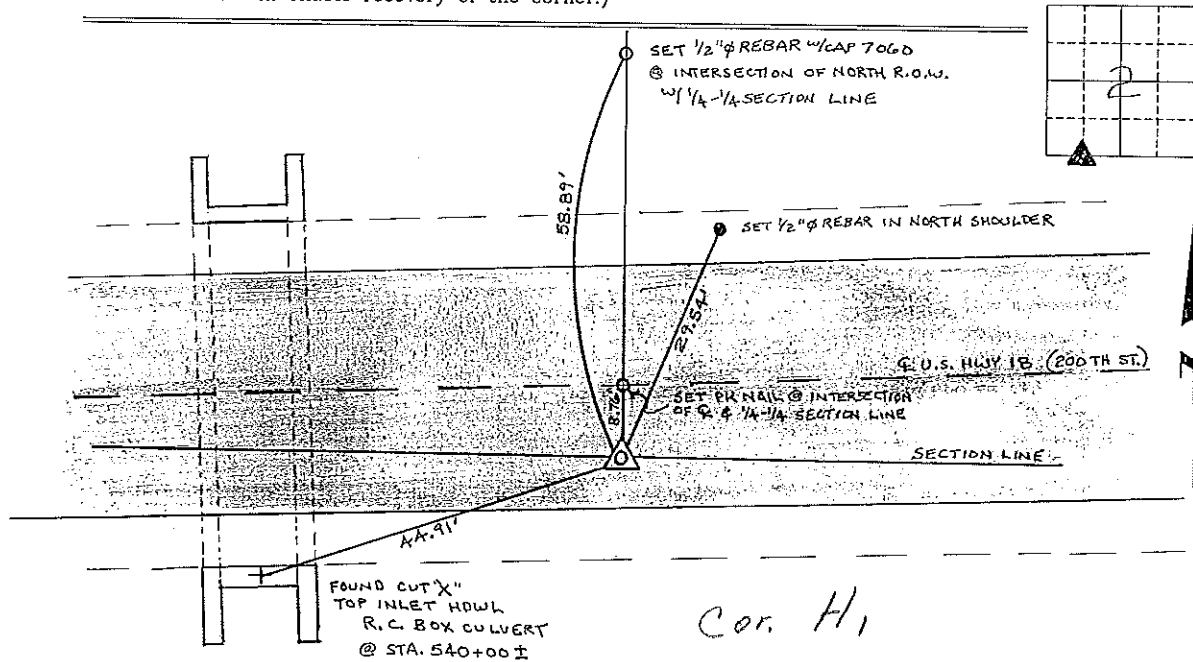
Land Survey Monuments situated in Section 2, Township 95 North, Range 13 West, of the Fifth Principal Meridian, CHICKASAW County, Iowa. Previously recorded in NONE in County Recorder's Office.
(book, page, document number, etc.)

(Show reason for preparing this certificate, the evidence and detailed procedures used in establishing the corner positions and monumentation found or placed.)

Monument Description and Remarks: SE CORNER SW 1/4-SW 1/4 SECTION 2 T 95 N R 13 W.
SET A PK NAIL EQUADISTANT AND ON LINE BETWEEN THE SW COR. & THE S 1/4 COR.

PLAN - VIEW

(Show a minimum of three reference ties to durable physical objects, relevant monuments and physical conditions that will enable recovery of the corner.)



I hereby certify that this land surveying document was prepared and the related survey work was performed by me or under my direct personal supervision and that I am a duly licensed Land Surveyor under the laws of the State of Iowa.



List Corners to be Indexed

Corners	Section	Twp.	Range
SE-SW-SW	2	95 N	13 W