

Prepared by & Return to Harold - Reck's Surveying, 10 East Main Street, New Hampton, IA 50658, Ph. 641-394-2725

UNITED STATES PUBLIC LAND SURVEY CORNER CERTIFICATE

Land Survey Monuments situated in Section 11, Township 95 North, Range 13 West of the Fifth Principal Meridian, Chickasaw County, Iowa. 1.) Previously recorded in Deed Bk. 158, Pg. 405 in the County Recorder's office. 2.) Not previously recorded in the County Recorder's office.

This certificate is being prepared in compliance with Iowa Code Chapter 355.11 because:

- 2 There is no certificate on file for this corner.
- There are no longer three valid ties of record.
- 1 There are changes to reference ties of record.
- 1 There is change of monumentation of record.
- To clarify description of record monument (ties).

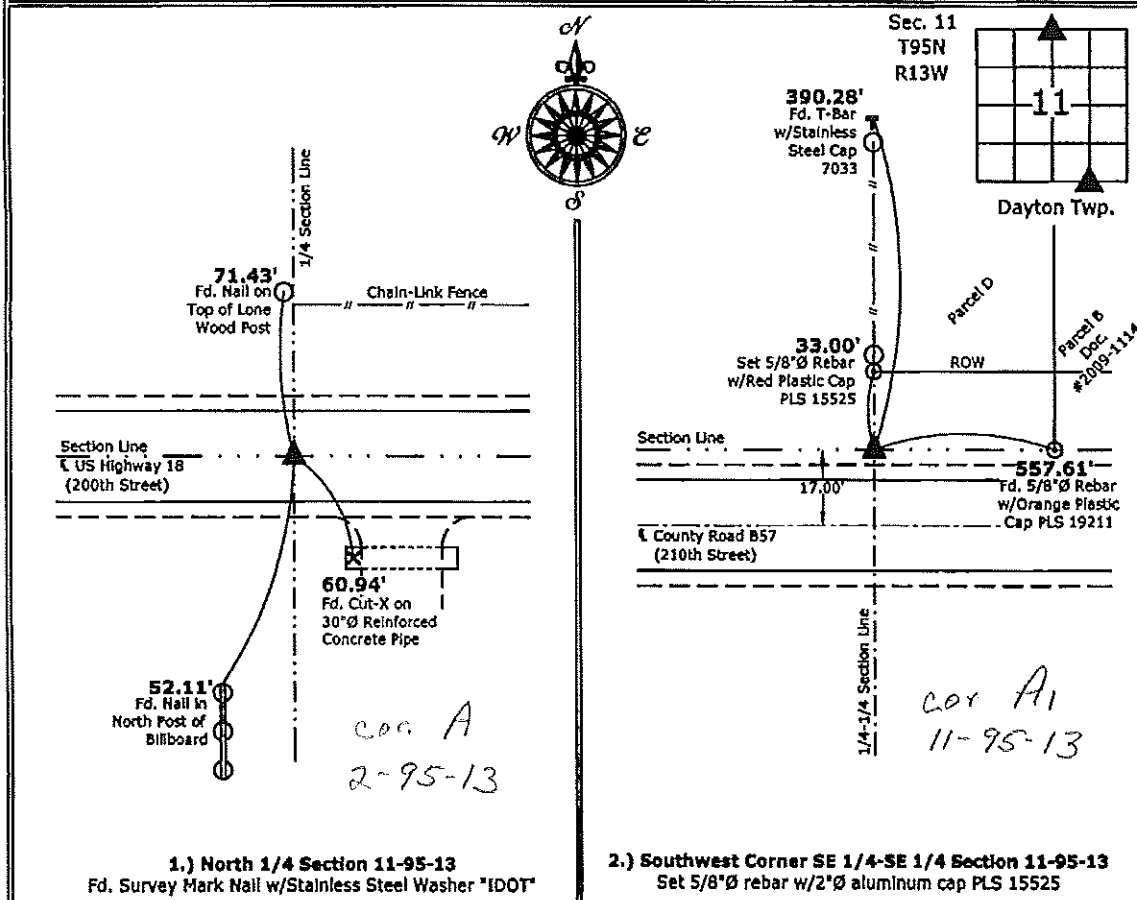
Monument Description and Remarks:

1.) North 1/4 Corner: Fd. Survey Mark Nail w/Stainless Steel Washer "IDOT" from information obtained from previous Section Corner Certificate. Established one new tie to update corner.

2.) Southwest Corner SE 1/4-SE 1/4: Set 5/8"Ø rebar w/2"Ø aluminum cap PLS 15525 equidistant and online between the South 1/4 and Southeast Corners of Section 11.

PLAN - VIEW

(Show a minimum of three reference ties to durable physical objects, relevant monuments and physical conditions that will enable recovery of the corner.)



1.) North 1/4 Section 11-95-13
 Fd. Survey Mark Nail w/Stainless Steel Washer "IDOT"

2.) Southwest Corner SE 1/4-SE 1/4 Section 11-95-13
 Set 5/8"Ø rebar w/2"Ø aluminum cap PLS 15525



I hereby certify that this land surveying document was prepared and the related survey work was performed by me or under my direct personal supervision.

List Corners to be Indexed			
Corners	Section	Twp.	Range

City Control Systems\New Hampton\New Hampton 2012.dwg, 9/14/2012 4:07:18 PM

Section 2-95-13
As referred to in
Engr. Title Book

UNITED STATES PUBLIC LAND SURVEY CORNER CERTIFICATE

OF 2

Land Survey Monuments situated in Section 11, Township 95 N North, Range 13 W West, of the Fifth Principal Meridian, CHICKASAW County, Iowa. Previously recorded in NONE in County Recorder's Office.
(book, page, document number, etc.)

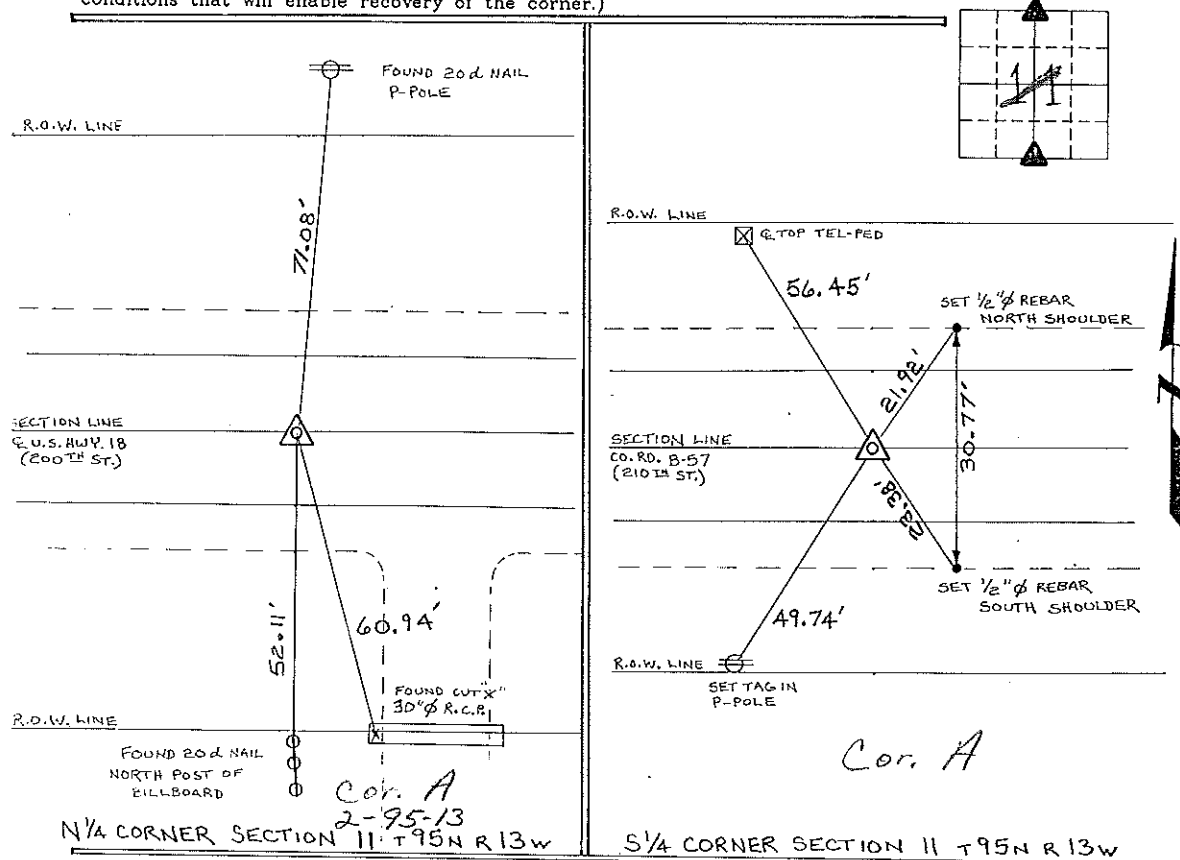
(Show reason for preparing this certificate, the evidence and detailed procedures used in establishing the corner positions and monumentation found or placed.)

Monument Description and Remarks: N 1/4 CORNER SECTION 11 T 95 N R 13 W:
FOUND I.D.O.T. ALUMINUM MONUMENT & U.S. HWY. 18.

S 1/4 CORNER SECTION 11 T 95 N R 13 W: FOUND HINGE NAIL & COUNTY ROAD,
B-57 (210TH ST.)

PLAN - VIEW

(Show a minimum of three reference ties to durable physical objects, relevant monuments and physical conditions that will enable recovery of the corner.)



I hereby certify that the survey work was completed and this certificate was prepared by me or under my direct personal supervision and that I am a duly registered land surveyor under the laws of the state of Iowa.

Signature: Lyle G. TeKippe
Lyle G. TeKippe

Date: 8-25-95 Reg. No. 7060
My Registration Renewal Date is December 31, 1996



List Corners to be Indexed

Corners	Section	Twp.	Range
N 1/4	11	95 N	13 W
Cor. A 2-95-13			
S 1/4	11	95 N	13 W
Cor. B 11-95-13			