

UNITED STATES PUBLIC LAND SURVEY CORNER CERTIFICATE

OF

Land Survey Monuments situated in Section 12, Township 95 North, Range 13 West, of the Fifth Principal Meridian, CHICKASAW County, Iowa.
 Previously recorded in NONE in County Recorder's Office.
(book, page, document number, etc.)

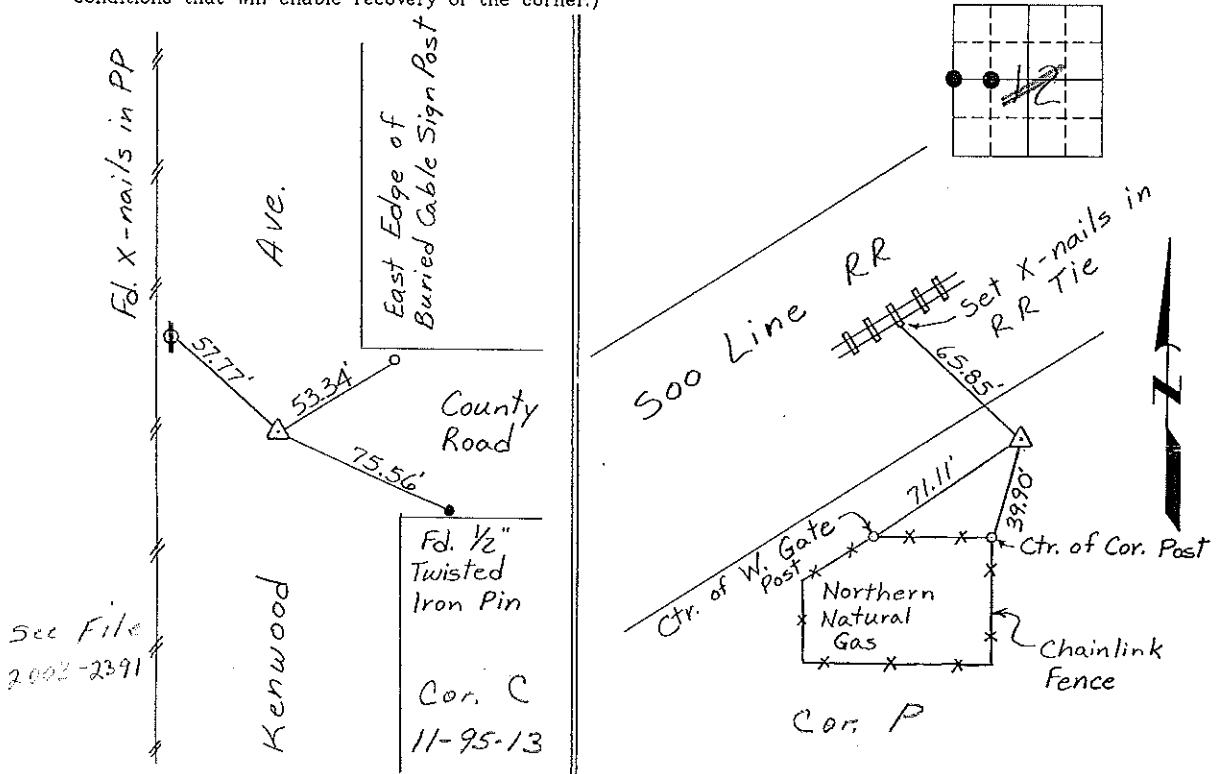
*Section 11-95-13
 As referred to in
 Engr. Tie Book*

(Show reason for preparing this certificate, the evidence and detailed procedures used in establishing the corner positions and monumentation found or placed.)

Monument Description and Remarks: W 1/4 CORNER, SECTION 12-T95N-R13W:
Found Cut 'X' in pavement.
SE CORNER, SW 1/4-NW 1/4, SECTION 12-T95N-R13W: Set 1/2" Rebar
with cap midway between W 1/4 corner & Center of Section.

PLAN - VIEW

(Show a minimum of three reference ties to durable physical objects, relevant monuments and physical conditions that will enable recovery of the corner.)



W 1/4 Corner, Section 12-T95N-R13W

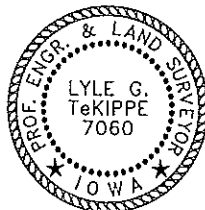
SE CORNER SW 1/4-NW 1/4 SECTION 12-T95N-R13W

I hereby certify that the survey work was completed and this certificate was prepared by me or under my direct personal supervision and that I am a duly registered land surveyor under the laws of the state of Iowa.

Signature: Lyle G. TeKippe
 Lyle G. TeKippe
 Date: 2-17-95 Reg. No. 7060
 My Registration Renewal Date is December 31, 1996

List Corners to be Indexed

Corners	Section	Twp.	Range
W 1/4	12	95N	13W
Cor. C	11-95-13		
SE COR.			
SW 1/4-NW 1/4	12	95N	13W
Cor. 11-95-13			



Seal

Placed in Tie Book 3/24/95