

UNITED STATES PUBLIC LAND SURVEY CORNER CERTIFICATE

OF

Land Survey Monuments situated in Section 12 Township 95 NORTH, Range 13 WEST, of the Fifth Principal Meridian, CHICKASAW County, Iowa. Previously recorded in (NONE) in County Recorder's Office.

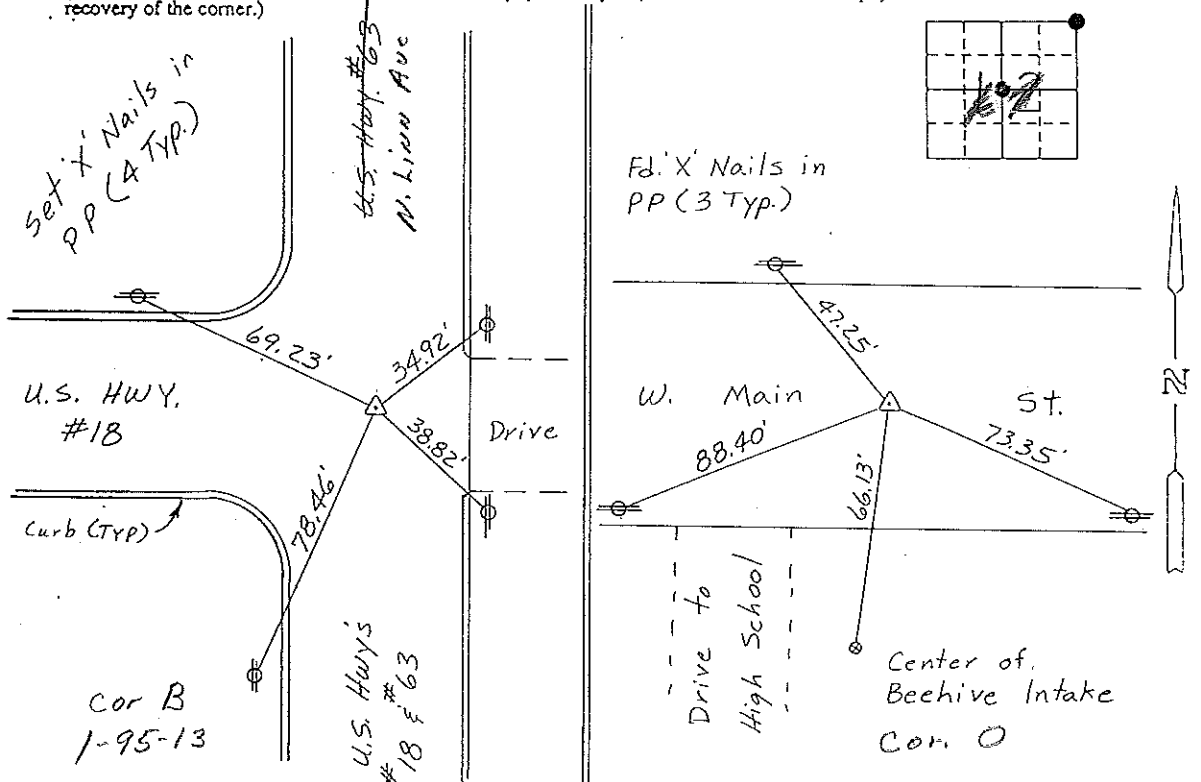
(Show reason for preparing this certificate, the evidence and detailed procedures used in establishing the corner positions and monumentation found or placed.)

Monument Description and Remarks: NE CORNER, SECTION 12-T95N-R13W:
FOUND IDOT ALUMINUM CAP.
CENTER OF SECTION 12-T95N-R13W: SET PK NAIL FROM TIES.

Section 1-95-13
As referred to in
Engr. TIC Book

PLAN - VIEW

(Show a minimum of three reference ties to durable physical objects, relevant monuments and physical conditions that will enable recovery of the corner.)



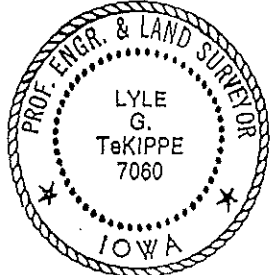
NE CORNER, SECTION 12-T95N-R13W CENTER OF SECTION 12-T95N-R13W

I hereby certify that the survey work was completed and this certificate was prepared by me or under my direct personal supervision and that I am a duly registered land surveyor under the laws of the state of Iowa.

Signature: Lyle G. TeKippe
Name typed or printed: Lyle G. TeKippe

Date: 2-15-93 Reg. No. 7060
My Registration Expires December 31, 1994

Corners	List Corners to be Indexed	Section	Twp	Range
NE Cor.	12	95N	13W	
Center	12	95N	13W	
	COR O	12-95-13		
	COR B	1-95-13		



SEAL

Placed in TIC
Book ~~3/93~~
3/93