

UNITED STATES PUBLIC LAND SURVEY CORNER CERTIFICATE

OF

Land Survey Monuments situated in Section 12, Township 95 North, Range 13 West, of the Fifth Principal Meridian, CHICKASAW County, Iowa. Previously recorded in NONE in County Recorder's Office.

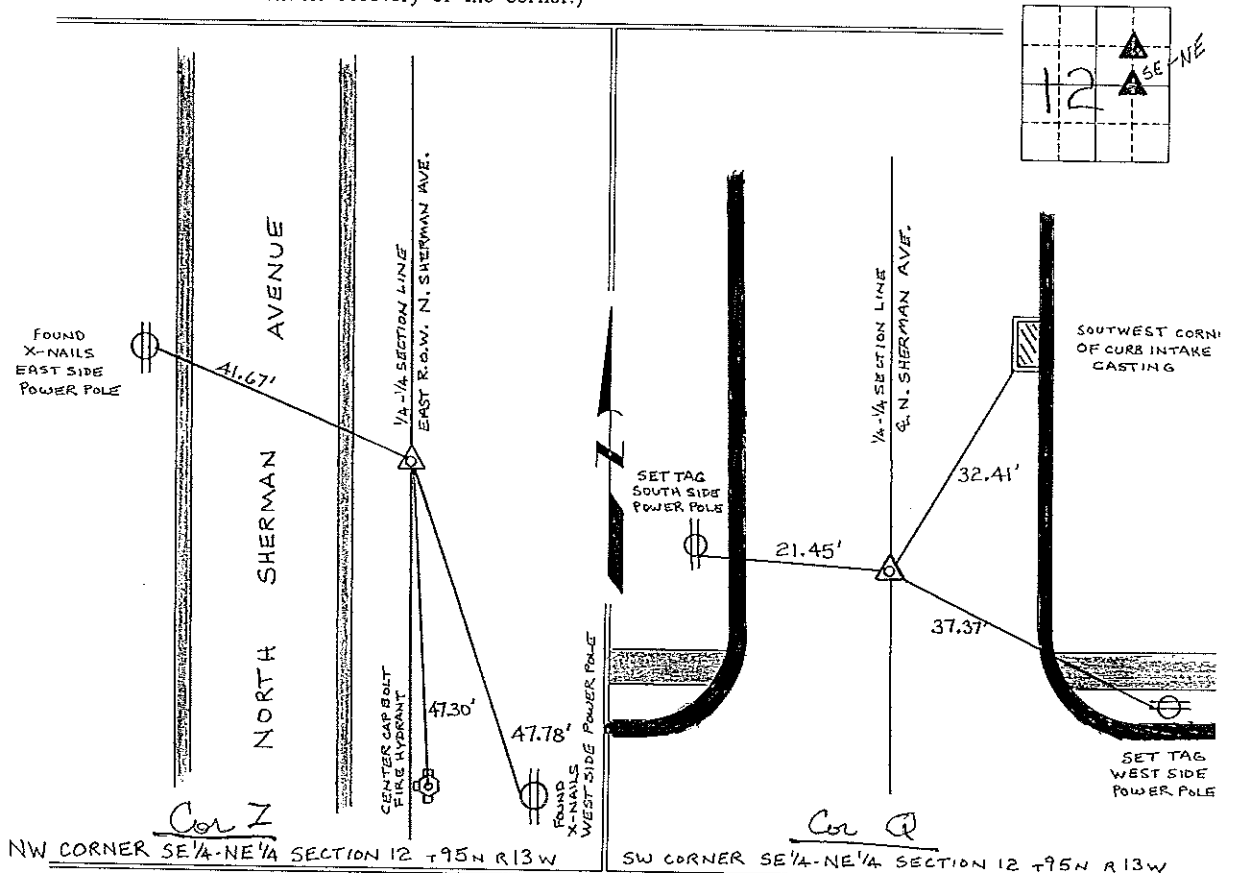
(Show reason for preparing this certificate, the evidence and detailed procedures used in establishing the corner positions and monumentation found or placed.)

Monument Description and Remarks: NW CORNER SE 1/4-NE 1/4 SECTION 12 T95N R13W:
SET 1/2" Ø REBAR W/CAP 7000 AT THE INTERSECTION OF THE QUARTER-QUARTER SECTION LINES.

Cor Y
SW CORNER SE 1/4-NE 1/4 SECTION 12 T95N R13W: CUT X IN P.C.C. STREET, BY EXTENDING THE LINE FROM THE NW CORNER NE 1/4-NE 1/4 (RECORDED IN DEEDS BOOK 151, PAGE 262) SOUTH THROUGH THE C OF NORTH SHERMAN AVE (NORTH OF THE R.R. TRACKS), & POSITION ESTABLISHED FROM SURVEY MONUMENTS OF RECORD, AND INTERSECTING THIS LINE WITH THE QUARTER SECTION LINE BETWEEN THE CENTER AND THE EAST 1/4 CORNER. Cor W

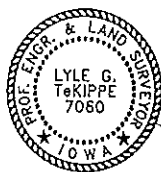
PLAN - VIEW

(Show a minimum of three reference ties to durable physical objects, relevant monuments and physical conditions that will enable recovery of the corner.)



NW CORNER SE 1/4-NE 1/4 SECTION 12 T95N R13W

SW CORNER SE 1/4-NE 1/4 SECTION 12 T95N R13W



I hereby certify that this land surveying document was prepared and the related survey work was performed by me or under my direct personal supervision and that I am a duly licensed Land Surveyor under the laws of the State of Iowa.

Lyle G. TeKippe 11-13-97
 Lyle G. TeKippe Date
 License number 7080
 My license renewal date is December 31, 1998.
 Sheets covered by this seal: Individual

List Corners to be Indexed			
Corners	Section	Twp.	Range
NW-SE-NE	12	95N	13W
	<u>Cor Y</u>	<u>12-95-13</u>	
SW-SE-NE	12	95N	13W

Cor W 12-95-13

Placed in the book 11/25/97