

Chickasaw Co. Recorder
 Cindy Messersmith
Fee Book 2016-1223
 09/09/2016 @0408PM
 SCC SEC COR CERT
 Book: Page: # Pages: 1
 Total Fees: \$7.00

Prepared by & Return to: Herold - Reicks Surveying, 10 East Main Street, New Hampton, IA 50659, Ph. 641-394-2725

UNITED STATES PUBLIC LAND SURVEY CORNER CERTIFICATE

Land Survey Monuments situated in Section 7, Township 95 North, Range 12 West of the Fifth Principal Meridian, Chickasaw County, Iowa. Previously recorded in Doc. #2004-0473 in the County Recorder's office.

This certificate is being prepared in compliance with Iowa Code Chapter 355.11 because:

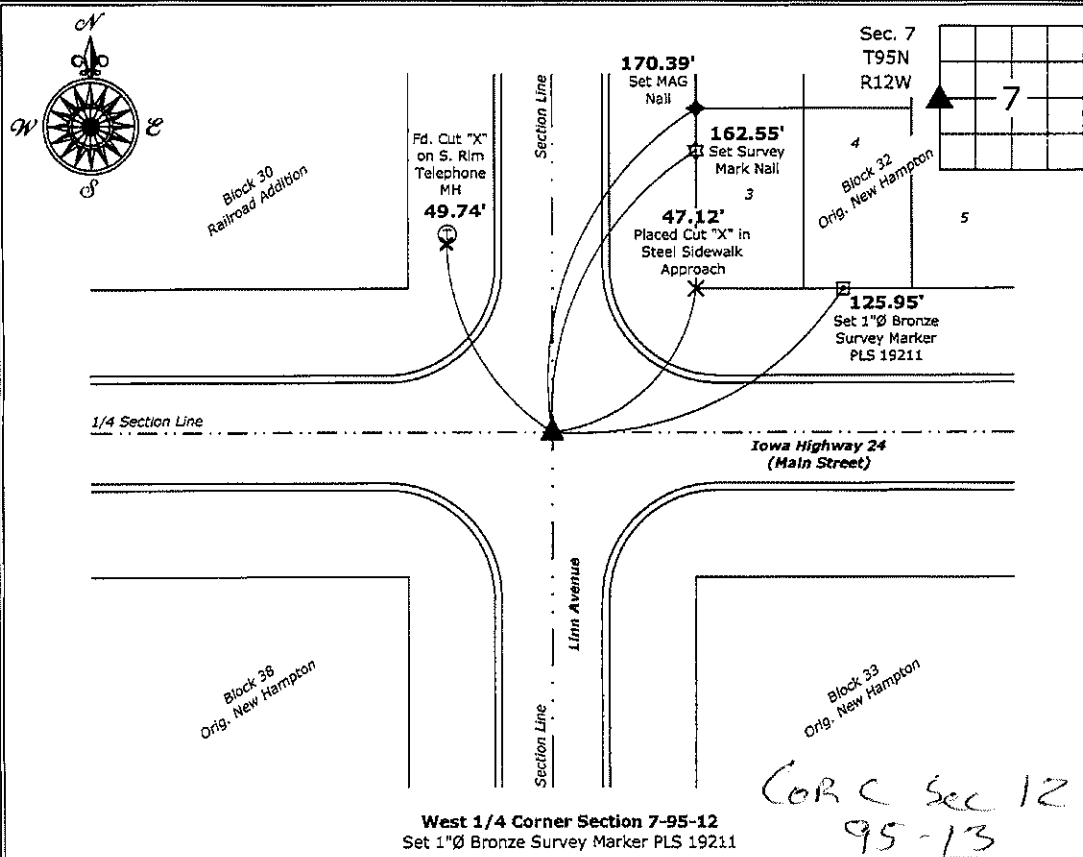
- There is no certificate on file for this corner.
- There are no longer three valid ties of record.
- There are changes to reference ties of record.
- There is change of monumentation of record.
- To clarify description of record monument (ties).

Monument Description and Remarks:

West 1/4 Corner: Set 1"Ø Bronze Survey Marker PLS 19211 at previous location (Found MAG Nail w/Stainless Steel Washer PLS 15525) with coordinates obtained prior to highway HMA overlay. Monument falls in concrete collar around sewer manhole.

PLAN - VIEW

(Show a minimum of three reference ties to durable physical objects, relevant monuments and physical conditions that will enable recovery of the corner.)



West 1/4 Corner Section 7-95-12
 Set 1"Ø Bronze Survey Marker PLS 19211



I hereby certify that this land surveying document was prepared and the related survey work was performed by me or under my direct personal supervision and that I am a duly licensed Land Surveyor under the laws of the State of Iowa.
Kirk D. Reicks 9-9-16
 Kirk D. Reicks Date:
 License number 19211
 My license renewal date is December 31, 2016.
 Sheets covered by this seal: Individual sheet only

List Corners to be Indexed

Corners	Section	Twp.	Range
W 1/4	7	95	12
E 1/4	12	95	13

Project Number: 2016-097
 FB: New Hampton 2, Pg. 41

File: S:_C3D Projects\County Control Systems\CHICKASAW\CHICK-28 (New Hampton)\CHICK-28.dwg, 9/9/2016 6:40:18 AM

Section 12-95-13
 As referred to in
 Eng. Tie Book

FILED 2004-0473
 RECORDER'S OFFICE
 CHICKASAW COUNTY, IOWA
 2004 MAR 3 AM 8 48
 CINDY MESSERSMITH
 COUNTY RECORDER

TeKIPPE ENGINEERING, P.C., 128 South Vine Street, West Union, Iowa 52175 Phone (563) 422-5131

UNITED STATES PUBLIC LAND SURVEY CORNER CERTIFICATE

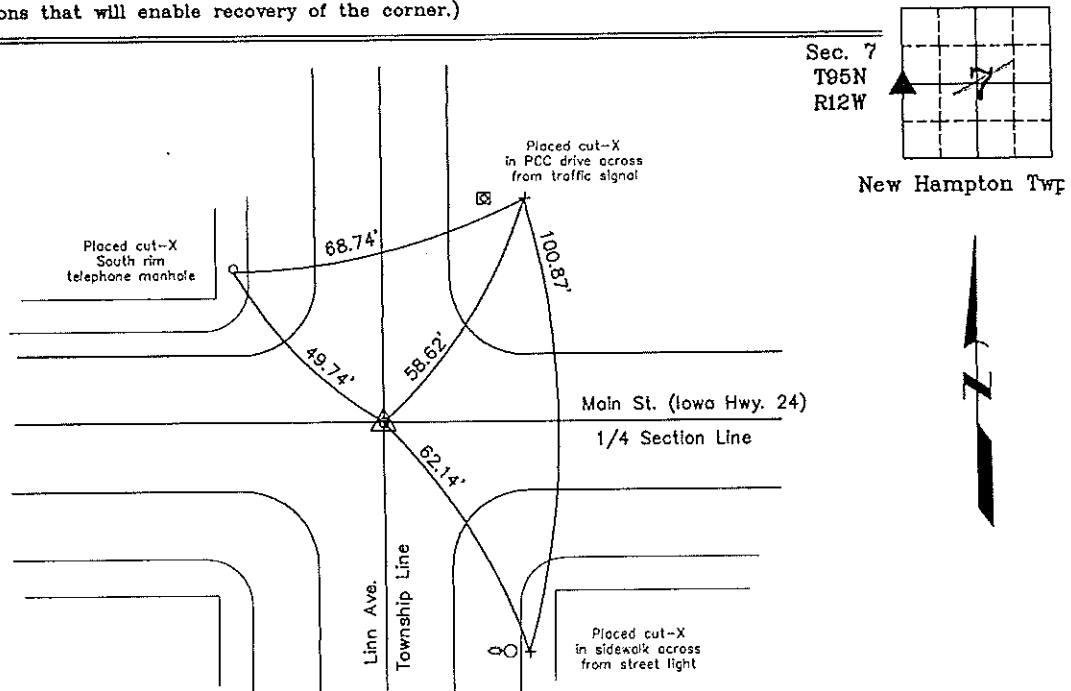
OF
 Land Survey Monuments situated in Section 12, Township 95 North, Range
12 West of the Fifth Principal Meridian, CHICKASAW County, Iowa.
 Previously recorded in Book 148, Page 137 in County Recorder's Office.
 (book, page, document number, etc.)

(Show reason for preparing this certificate, the evidence and detailed procedures used in establishing the corner positions and monumentation found or placed.)

Monument Description and Remarks: West 1/4 Corner Section 7 T95N R12W: The monument noted in the previous Section Corner Certificate recorded in the Chickasaw County Recorder's Office in Book 148, Page 137 was covered by a HMA overlay. Set MAG nail w/stainless steel washer PLS 15525 using coordinates derived from a previous survey. All previous reference ties were missing.

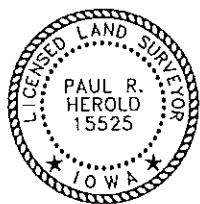
PLAN - VIEW

(Show a minimum of three reference ties to durable physical objects, relevant monuments and physical conditions that will enable recovery of the corner.)



Cor. C Sec 12-95-13

W 1/4 Corner Section 7 T95N R12W
 Set MAG nail w/stainless steel washer PLS 15525



I hereby certify that this land surveying document was prepared and the related survey work was performed by me or under my direct personal supervision and that I am a duly licensed Land Surveyor under the laws of the State of Iowa.

Paul R. Herold 3-2-04

Paul R. Herold Date
 License number 15525
 My license renewal date is December 31, 2004.
 Sheets covered by this seal: Individual

List Corners to be Indexed			
Corners	Section	Twp.	Range
W 1/4	7	95N	12W
E 1/4	12	95N	13W

X:\Section Corners\Sec. 07\7-95-12k.dwg
 Project Number 03207.LS

UNITED STATES PUBLIC LAND SURVEY CORNER CERTIFICATE

OF

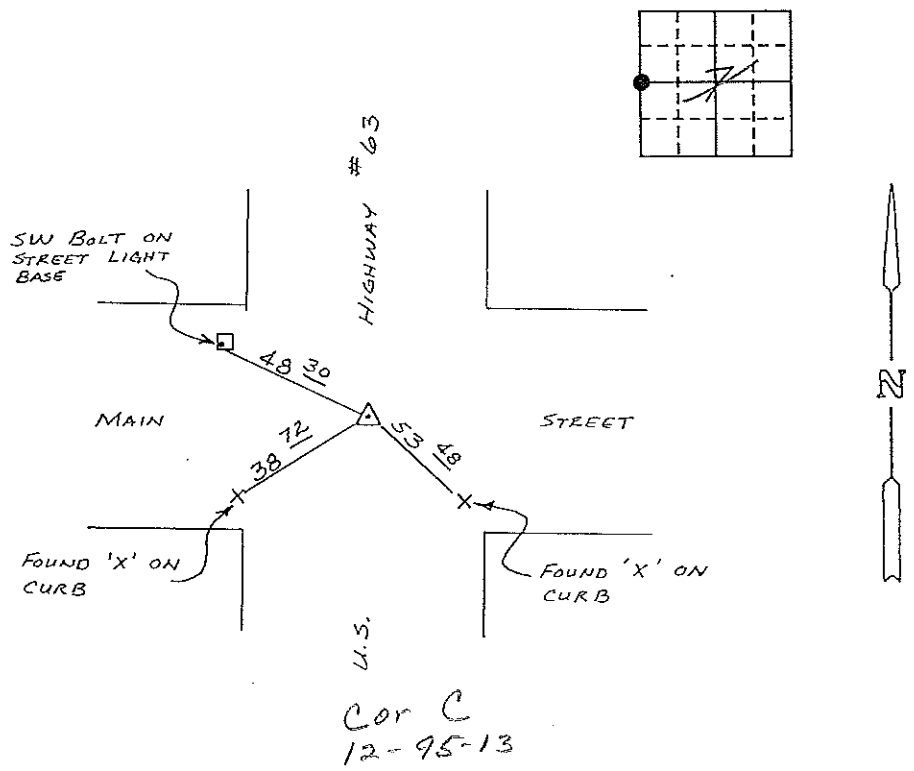
Land Survey Monuments situated in Section 7 12, Township 95 N, Range 12 W, of the Fifth Principal Meridian, CHICKASAW County, Iowa. Previously recorded in (NONE) in County Recorder's Office.

(Show reason for preparing this certificate, the evidence and detailed procedures used in establishing the corner positions and monumentation found or placed.)

Monument Description and Remarks: FOUND I. D. O. T. ALUMINUM CAP
IN PAVEMENT.

PLAN - VIEW

(Show a minimum of three reference ties to durable physical objects, relevant monuments and physical conditions that will enable recovery of the corner.)

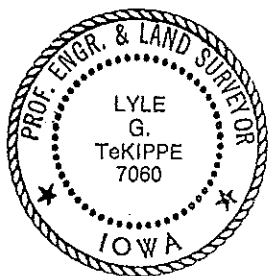


W 1/4 CORNER SECTION 7-T95N-R 12W

I hereby certify that the survey work was completed and this certificate was prepared by me or under my direct personal supervision and that I am a duly registered land surveyor under the laws of the state of Iowa.

Signature: Lyle G. TeKippe
Name typed or printed: Lyle G. TeKippe
Date: 10-15-91 Reg. No. 7060

Corners	List Corners to be Indexed Section	Twp	Range
W 1/4	7	95N	12W



*Corner C
Section 12
Doughton Twp.
Placed in the
Base 10/16/91*