

2003 JUL 29 AM 9 02

CINDY MESSERSMITH
 COUNTY RECORDER

TEKIPPE ENGINEERING, P.C., 128 South Vine Street, West Union, Iowa 52176 Phone (563) 422-6131

UNITED STATES PUBLIC LAND SURVEY CORNER CERTIFICATE

OF

Land Survey Monuments situated in Section 12, Township 95 North, Range 13 West of the Fifth Principal Meridian, CHICKASAW County, Iowa. Previously recorded in Deeds Book 157, Page 263 in County Recorder's Office. (book, page, document number, etc.)

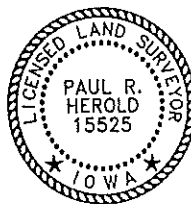
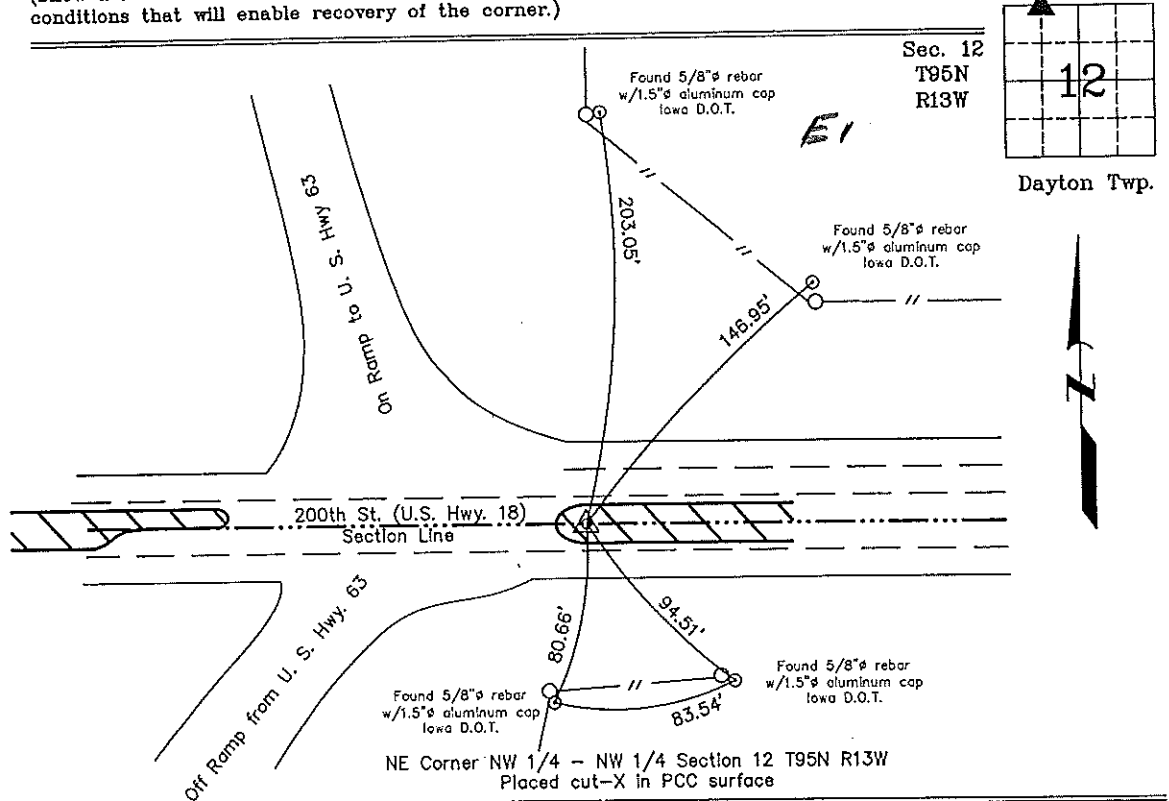
(Show reason for preparing this certificate, the evidence and detailed procedures used in establishing the corner positions and monumentation found or placed.)

Monument Description and Remarks: **NE Corner NW 1/4 - NW 1/4 Section 12 T95N R13W:**
 The monument indicated in the previous Section Corner Certificate, recorded in the Chickasaw County Recorder's Office in Deeds Book 157, Page 263 was destroyed during the relocation of U. S. Highway 63 and new PCC paving of U.S. Highway 18. Placed cut-X in PCC surface using coordinates from a previous GPS survey prior to construction. All previous reference ties were missing. Four reference ties were added.

PLAN - VIEW

Project Number 02093.LS
 FB. New Hampton 1 PG. 1-4

(Show a minimum of three reference ties to durable physical objects, relevant monuments and physical conditions that will enable recovery of the corner.)



I hereby certify that this land surveying document was prepared and the related survey work was performed by me or under my direct personal supervision and that I am a duly licensed Land Surveyor under the laws of the State of Iowa.

Paul R. Herold 7-25-03
 Paul R. Herold Date
 License number 15525
 My license renewal date is December 31, 2004.
 Sheets covered by this seal: Individual

List Corners to be Indexed			
Corners	Section	Twp.	Range
NE-NW-NW	12	95N	13W

Filed 8-22-03

X:\Section Corners\Sec. 12\12-95-13b.dwg

County Engineer

Section 2-95-13
As referred to in
Engg. Tie Book

UNITED STATES PUBLIC LAND SURVEY CORNER CERTIFICATE

OF

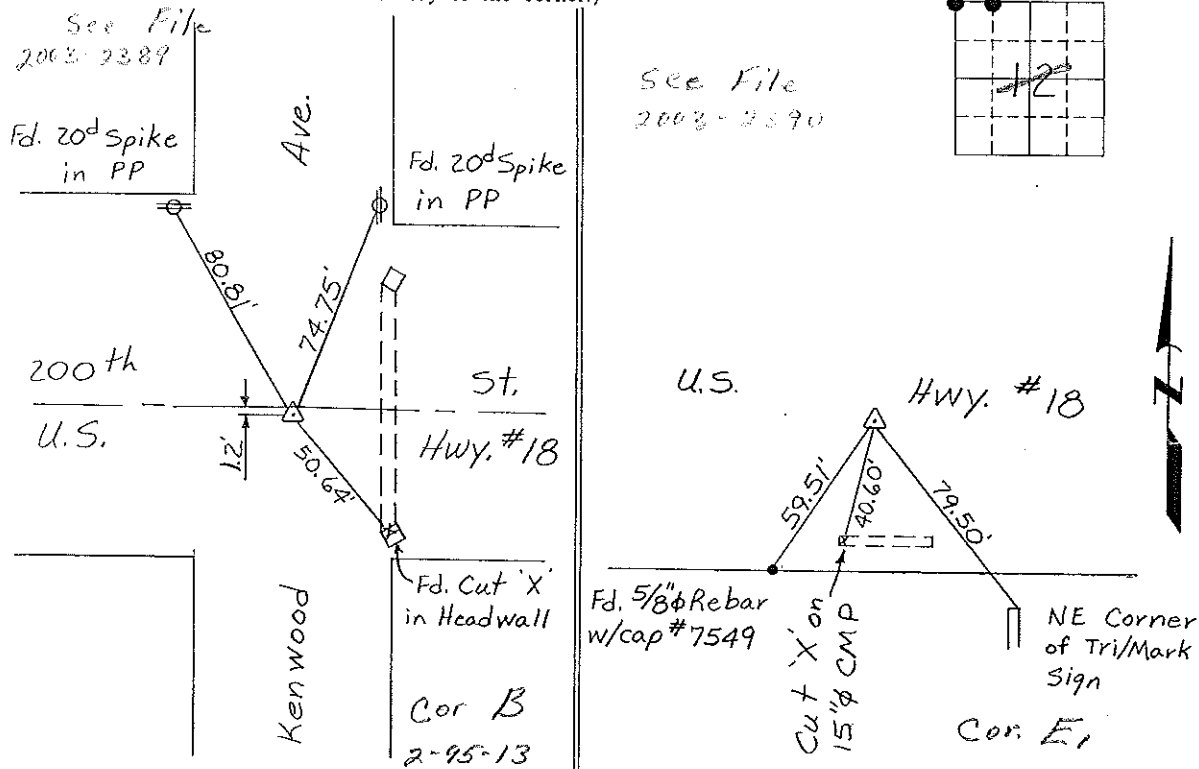
Land Survey Monuments situated in Section 12, Township 95 North, Range 13 West, of the Fifth Principal Meridian, CHICKASAW County, Iowa.
Previously recorded in NONE in County Recorder's Office.
(book, page, document number, etc.)

(Show reason for preparing this certificate, the evidence and detailed procedures used in establishing the corner positions and monumentation found or placed.)

Monument Description and Remarks: NW CORNER, SECTION 12-T95N-R13W:
Found IDOT Aluminum Mon. 1.2' South of nail found @ E.P.I.
NE CORNER, NW 1/4-NW 1/4, SECTION 12-T95N-R13W: Found IDOT
Aluminum Cap in pavement.

PLAN - VIEW

(Show a minimum of three reference ties to durable physical objects, relevant monuments and physical conditions that will enable recovery of the corner.)



NW CORNER, Section 12-T95N-R13W

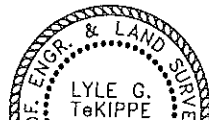
NE COR.
NW 1/4-NW 1/4, SECTION 12-T95N-R13W

I hereby certify that the survey work was completed and this certificate was prepared by me or under my direct personal supervision and that I am a duly registered land surveyor under the laws of the state of Iowa.

Signature: Lyle G. TeKippe
Lyle G. TeKippe

Date: 2-17-95 Reg. No. 7080
My Registration Renewal Date is December 31, 1996

Seal



List Corners to be Indexed			
Corners	Section	Twp.	Range
NW	12	95N	13W
Cor B	2-95-13		
NE Corner			
NW 1/4-NW 1/4	12	95N	13W
	1	95-13	

*20' west in tie
2/24/95*