

Section 1-95-13  
As referred to in  
Engr. Tie Book

FILED 2003-2391  
RECORDER'S OFFICE  
CHICKASAW COUNTY, IOWA  
2003 JUL 29 AM 9 03  
CINDY MESSERSMITH  
COUNTY RECORDER

TeKIPPE ENGINEERING, P.C., 128 South Vine Street, West Union, Iowa 52175 Phone (563) 422-5131

UNITED STATES PUBLIC LAND SURVEY CORNER CERTIFICATE

OF

Land Survey Monuments situated in Section 12, Township 95 North, Range 13 West of the Fifth Principal Meridian, CHICKASAW County, Iowa. Previously recorded in (1) Bk 151 Pg 262 (2) Bk 157 Pg 264 in County Recorder's Office. (book, page, document number, etc.)

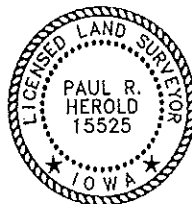
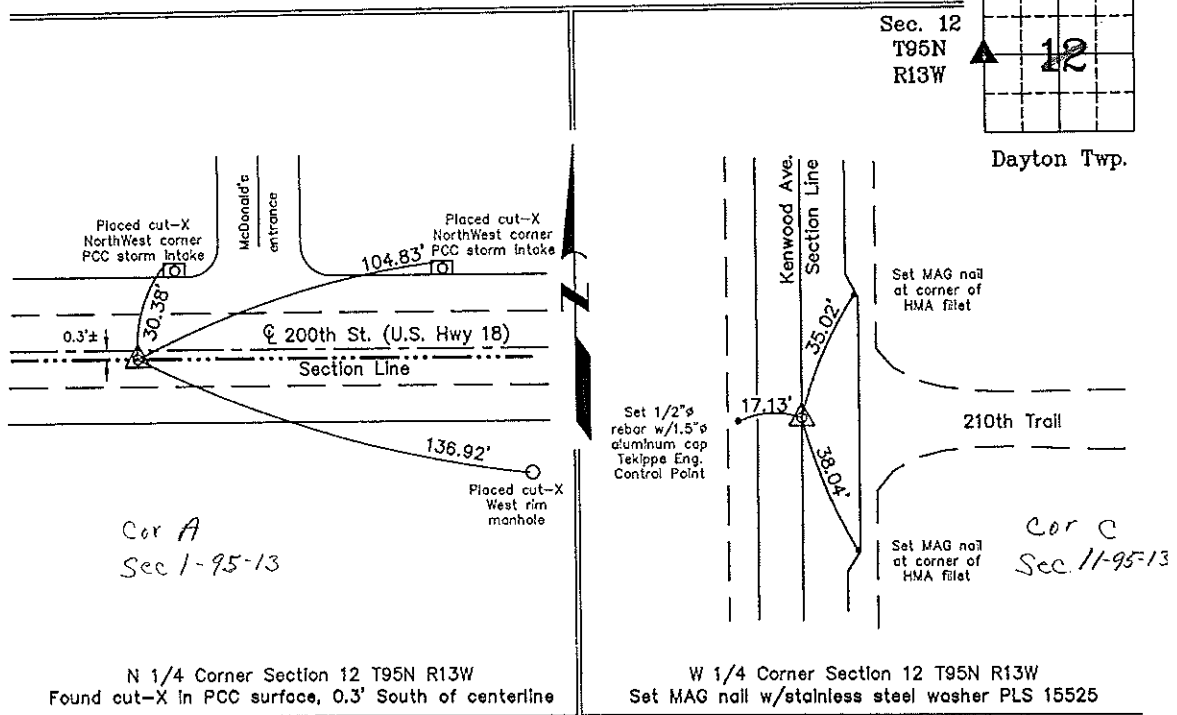
(Show reason for preparing this certificate, the evidence and detailed procedures used in establishing the corner positions and monumentation found or placed.)

Monument Description and Remarks: **(1) N 1/4 Corner Section 12 T95N R13W:** Found cut-X in PCC surface with information obtained from the previous Section Corner Certificate recorded in the Chickasaw County Recorder's Office in Deed Book 151, Page 262. All previous reference ties were missing. Three reference ties were added.  
**(2) W 1/4 Corner Section 12 T95N R13W:** The previous monument noted in the Chickasaw County Recorder's Office in Deed Book 157, Page 264 was covered with a HMA overlay as part of the relocation of U. S. Hwy. 63. All previous reference ties were destroyed. Set MAG nail w/stainless steel washer PLS 15525 using coordinates from a previous GPS survey prior to construction. Three reference ties were added.

PLAN -- VIEW

Project Number 02093.LS  
FB. New Hampton 1 PG. 1-4

(Show a minimum of three reference ties to durable physical objects, relevant monuments and physical conditions that will enable recovery of the corner.)



I hereby certify that this land surveying document was prepared and the related survey work was performed by me or under my direct personal supervision and that I am a duly licensed Land Surveyor under the laws of the State of Iowa.

Paul R. Herold 7-25-03  
Paul R. Herold Date  
License number 15525  
My license renewal date is December 31, 2004.  
Sheets covered by this seal: Individual

List Corners to be Indexed			
Corners	Section	Twp.	Range
N 1/4	12	95N	13W
W 1/4	12	95N	13W

Filed 8-26-03

X:\Section Corners\Sec. 12\12-95-13ck.dwg

County Engineer  
7/29/03

UNITED STATES PUBLIC LAND SURVEY CORNER CERTIFICATE

Section 1-95-13  
As referred to in  
Engl. Tee Book

OF 12 1, Township 95 NORTH, Range 13 WEST, of the Fifth Principal Meridian, CHICKASAW County, Iowa.  
Previously recorded in (NONE) in County Recorder's Office.  
(book, page, document number, etc.)

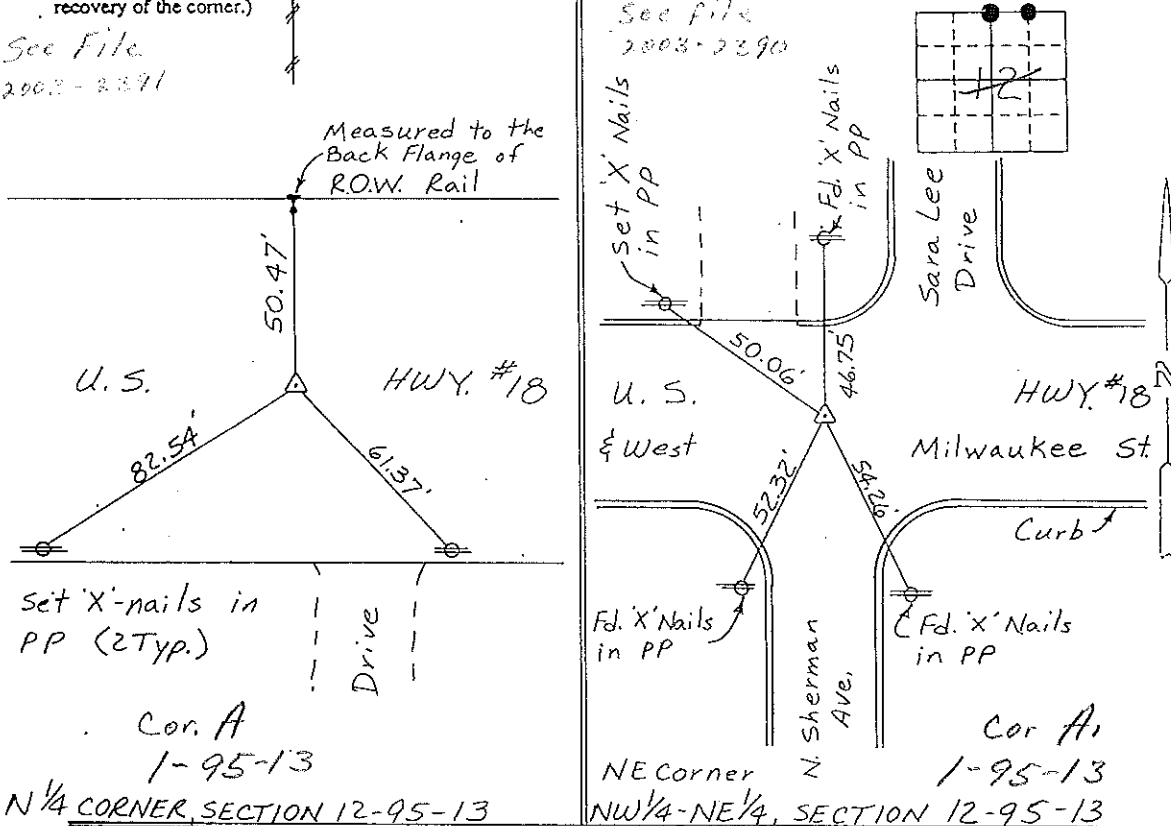
(Show reason for preparing this certificate, the evidence and detailed procedures used in establishing the corner positions and monumentation found or placed.)

Monument Description and Remarks: N 1/4 CORNER, SECTION 12-T95N-R13W:  
FOUND IDOT ALUMINUM CAP.  
NE CORNER, NW 1/4-NE 1/4, SECTION 12-T95N-R13W: FOUND  
IDOT ALUMINUM CAP.

PLAN - VIEW

(Show a minimum of three reference ties to durable physical objects, relevant monuments and physical conditions that will enable recovery of the corner.)

See File  
2003-2391



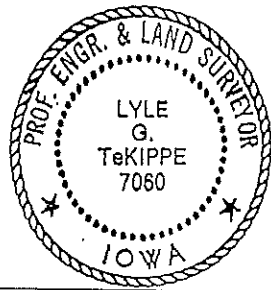
Cor. A  
1-95-13  
N 1/4 CORNER, SECTION 12-95-13

NE Corner  
NW 1/4-NE 1/4, SECTION 12-95-13

I hereby certify that the survey work was completed and this certificate was prepared by me or under my direct personal supervision and that I am a duly registered land surveyor under the laws of the state of Iowa.

Signature: Lyle G. TeKippe  
Name typed or printed: Lyle G. TeKippe

Date: 2-15-93 Reg. No. 7060  
My Registration Expires December 31, 1994



SEAL

Corners	Section	Twp	Range
N 1/4	12	95N	13W
NE Cor			
NW 1/4-NE 1/4	12	95N	13W

Corner A1 1-95-12  
Corner A 1-95-12

Placed in  
tee Books  
3/93