

UNITED STATES PUBLIC LAND SURVEY CORNER CERTIFICATE

*Section 1-95-13
is referred to in
Engl Tit Book*

OF
Land Survey Monuments situated in Section 12, Township 95 North, Range
13 West of the Fifth Principal Meridian, CHICKASAW County, Iowa.
Previously recorded in Deeds Book 151, Page 262 in County Recorder's Office.
(book, page, document number, etc.)

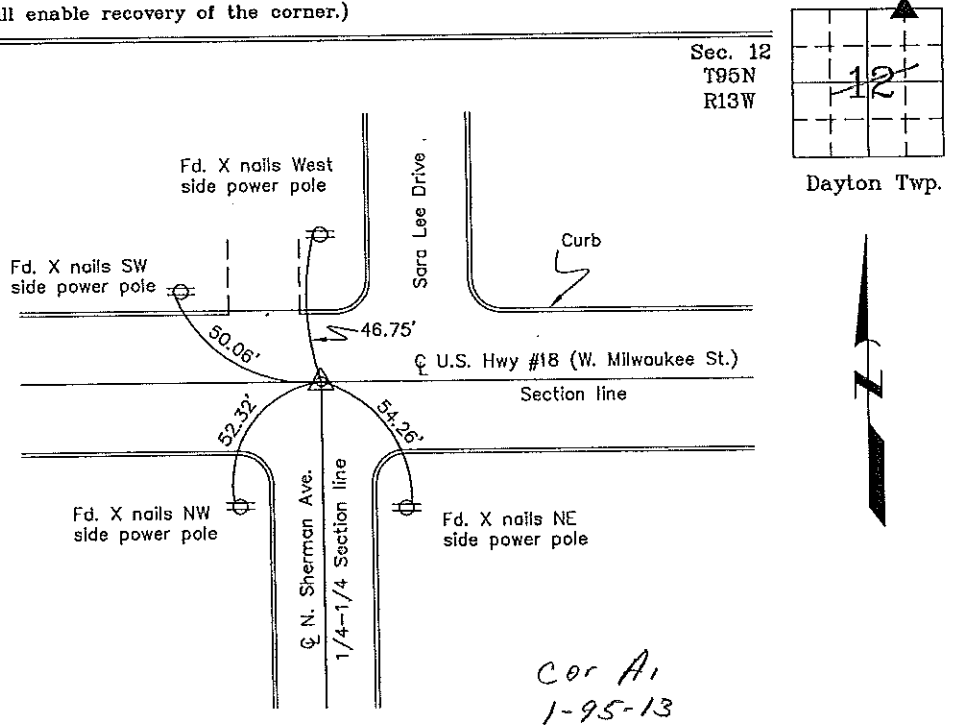
(Show reason for preparing this certificate, the evidence and detailed procedures used in establishing the corner positions and monumentation found or placed.)

Monument Description and Remarks: NE Corner NW 1/4-NE 1/4 Section 12 T95N R13W:
Found hinge nail in ACC overlay.

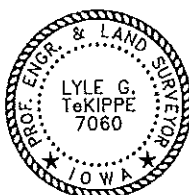
PLAN - VIEW

Project Number 00257.LS
FR 461 PG. 9

(Show a minimum of three reference ties to durable physical objects, relevant monuments and physical conditions that will enable recovery of the corner.)



NE Corner NW 1/4-NE 1/4 Section 12 T95N R13W
Found hinge nail in ACC overlay



I hereby certify that this land surveying document was prepared and the related survey work was performed by me or under my direct personal supervision and that I am a duly licensed Land Surveyor under the laws of the State of Iowa.

Lyle G. TeKippe 12-20-00
Lyle G. TeKippe Date

License number 7060
My license renewal date is December 31, 2000.
Sheets covered by this seal: Individual

List Corners to be Indexed			
Corners	Section	Twp.	Range
NE-NW-NE	12	95	13
A1	1	95	13

File 3-19-01

2000-2267

County Engineer's
Copy

UNITED STATES PUBLIC LAND SURVEY CORNER CERTIFICATE

Section 1-95-13
As referred to in
Engl. Tee Book

OF 12 1
Land Survey Monuments situated in Section 12 1, Township 95 NORTH, Range 13 WEST, of the Fifth Principal Meridian, CHICKASAW County, Iowa.
Previously recorded in (NONE) in County Recorder's Office.
(book, page, document number, etc.)

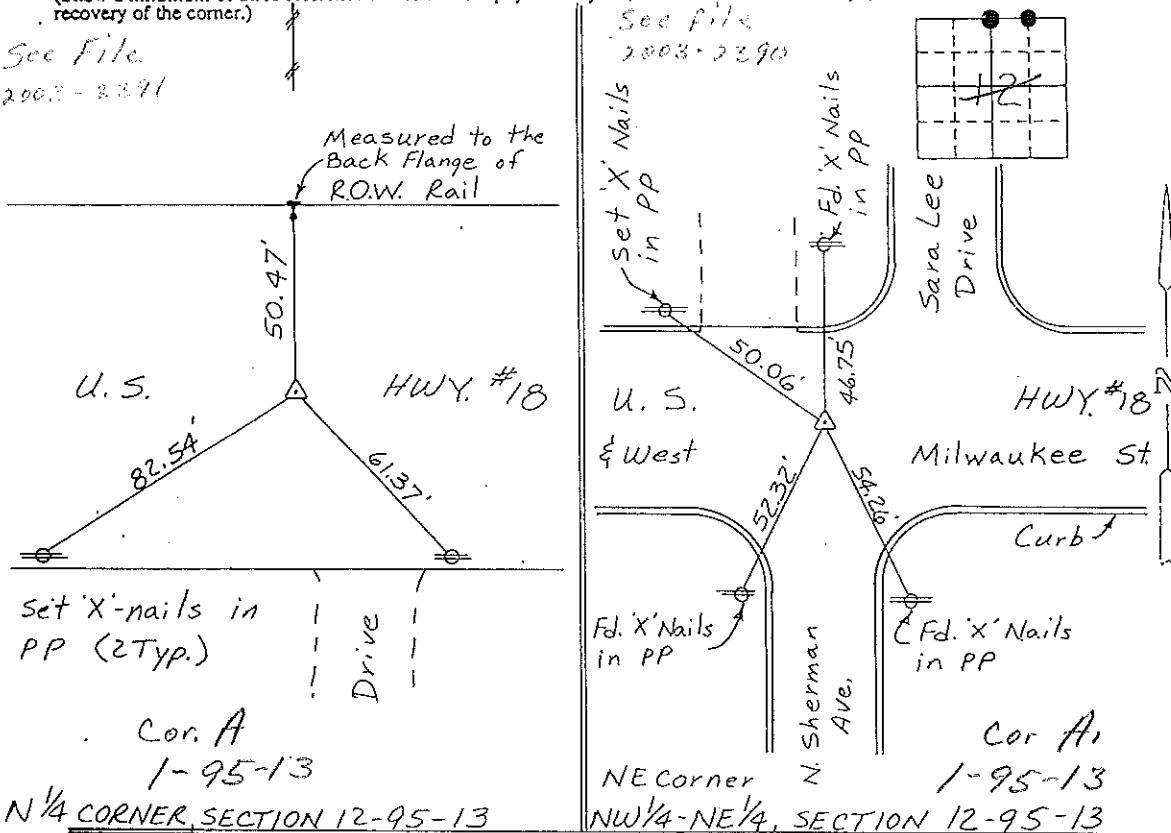
(Show reason for preparing this certificate, the evidence and detailed procedures used in establishing the corner positions and monumentation found or placed.)

Monument Description and Remarks: N 1/4 CORNER, SECTION 12-T95N-R13W:
FOUND IDOT ALUMINUM CAP.
NE CORNER, NW 1/4-NE 1/4, SECTION 12-T95N-R13W: FOUND
IDOT ALUMINUM CAP.

PLAN - VIEW

(Show a minimum of three reference ties to durable physical objects, relevant monuments and physical conditions that will enable recovery of the corner.)

See File
2003-2391



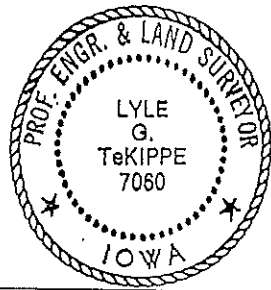
Cor. A
1-95-13
N 1/4 CORNER, SECTION 12-95-13

NE Corner
NW 1/4-NE 1/4, SECTION 12-95-13
Cor. A1
1-95-13

I hereby certify that the survey work was completed and this certificate was prepared by me or under my direct personal supervision and that I am a duly registered land surveyor under the laws of the state of Iowa.

Signature: Lyle G. TeKippe
Name typed or printed: Lyle G. TeKippe

Date: 2-15-93 Reg. No. 7060
My Registration Expires December 31, 1994



SEAL

Corners	Section	Twp	Range
N 1/4	12	95N	13W
NE Cor			
NW 1/4-NE 1/4	12	95N	13W

Corner A1 1-95-12
Corner A 1-95-12

Placed in
tee Books
3/93