

Chickasaw Co. Recorder
 Cindy Messersmith
Fee Book 2016-0351
 03/16/2016 @0948AM
 SCC: SEC COR CERT # Pages: 1
 Book: Page:
 Total Fees: \$7.00

PREPARED BY / RETURN TO: KENNETH D. STARK IOWA DEPARTMENT OF TRANSPORTATION 428 43rd ST. SW MASON CITY, IA 50401 841-423-7584

UNITED STATES PUBLIC LAND SURVEY CORNER CERTIFICATE

OF

Land Survey Monuments situated in Section 07, Township 95N, Range 12W
 of the Fifth Principal Meridian, CHICKASAW County, Iowa.

Previously recorded in Fee Book 2007-1349 in County Recorder's Office.
(book, page, document number, etc.)

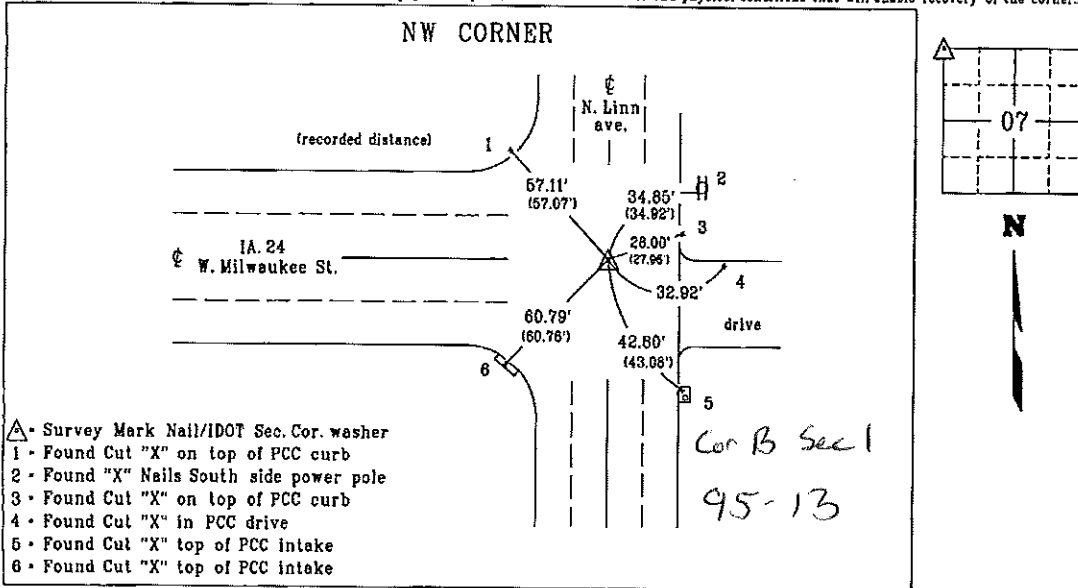
(Show reason for preparing this certificate, the evidence and detailed procedures used in establishing the corner positions and monumentation found or placed.)

Monument Description and Remarks: NW CORNER: Replaced previously found Mag Nail/washer #15525 with a Survey Mark Nail/ IDOT Sec. Cor. washer near C N. Linn ave. and C IA. 24 after HMA resurfacing project STPN-024-1(25)--2J-19.

Reason for cert: Monumentation has changed.

PLAN - VIEW

(Show a minimum of three reference ties to durable physical objects, relevant monuments and physical conditions that will enable recovery of the corner.)



- ▲ - Survey Mark Nail/IDOT Sec. Cor. washer
- 1 - Found Cut "X" on top of PCC curb
- 2 - Found "X" Nails South side power pole
- 3 - Found Cut "X" on top of PCC curb
- 4 - Found Cut "X" in PCC drive
- 5 - Found Cut "X" top of PCC intake
- 6 - Found Cut "X" top of PCC intake

List Corners to be Indexed

Corner	Section	Township	Range
NW CORNER	07	95N	12W

PROFESSIONAL LAND SURVEYOR

KENNETH D. STARK

10898

IOWA

I hereby certify that this land surveying document was prepared and the related survey work was performed by me or under my personal supervision and that I am duly licensed Land Surveyor under the laws of the state of Iowa.

Kenneth D. Stark Date 03-14-16

Kenneth D. Stark
 License number 10898
 My License renewal date is December 31, 2017
 Pages or sheets covered by this seal, 1

drawn by: als 02/16

filed by: als, cc
 right-of-way

19-07-95-12

Section 1-95-13
As referred to in
Engg. Tie Book

2007-1349

TEKIPPE ENGINEERING, P.C., 128 South Vine Street, West Union, Iowa 52175 Phone (563) 422-5131

UNITED STATES PUBLIC LAND SURVEY CORNER CERTIFICATE

OF 1

Land Survey Monuments situated in Section 12, Township 95 North, Range 13 West of the Fifth Principal Meridian, Chickasaw County, Iowa. Previously recorded in 1. Bk. 2003, Pg. 3705, 2. Bk. 165, Pg. 481 in County Recorder's Office.

(book, page, document number, etc.)

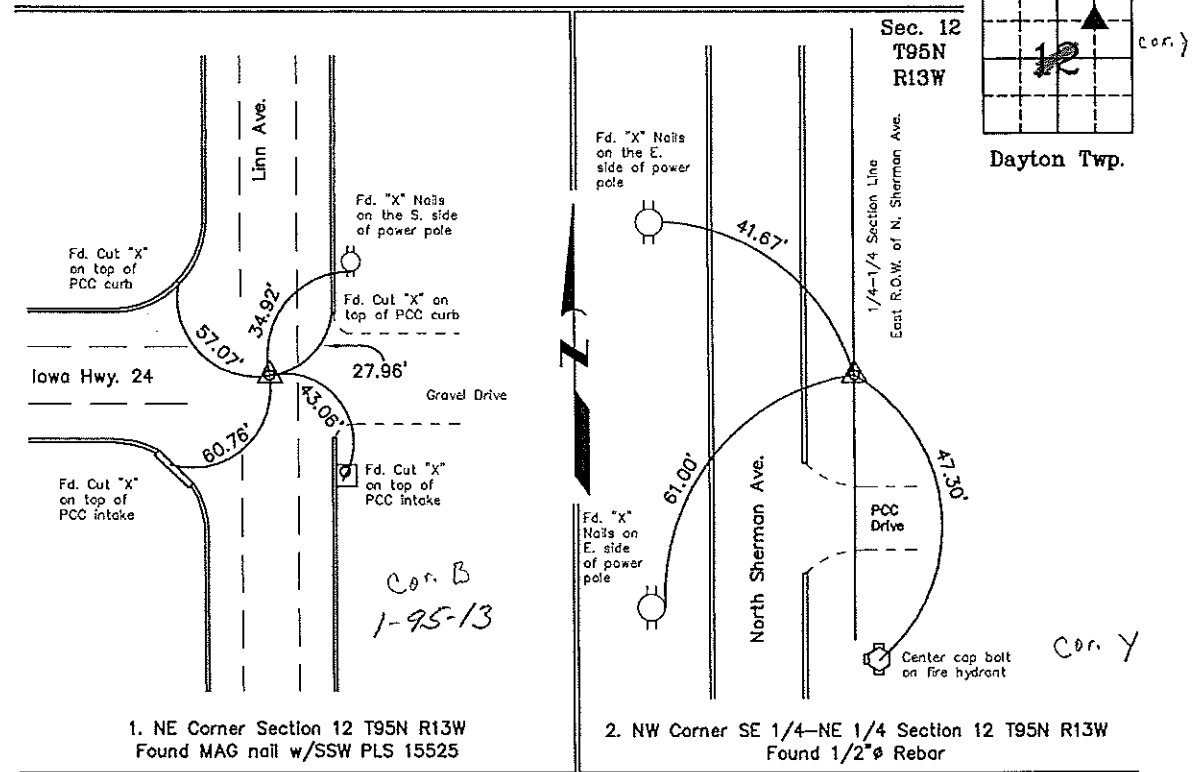
(Show reason for preparing this certificate, the evidence and detailed procedures used in establishing the corner positions and monumentation found or placed.)

Monument Description and Remarks: 1. NE Corner Section 12 T95N R13W: Found MAG Nail w/stainless steel washer PLS 15525. Previously recorded in the County Recorder's office in Book 2003, Page 3705. One tie was missing, the five other ties remain in place.

2. NW Corner SE 1/4-NE 1/4 Section 12 T95N R13W: Found 1/2" Rebar, previously recorded in the County Recorder's office in Book 165, Page 481. Existing ties did not match recorded certificate. Ties were used as shown below.

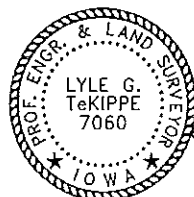
PLAN - VIEW

(Show a minimum of three reference ties to durable physical objects, relevant monuments and physical conditions that will enable recovery of the corner.)



1. NE Corner Section 12 T95N R13W Found MAG nail w/SSW PLS 15525

2. NW Corner SE 1/4-NE 1/4 Section 12 T95N R13W Found 1/2" Rebar



I hereby certify that this land surveying document was prepared and the related survey work was performed by me or under my direct personal supervision and that I am a duly licensed Land Surveyor under the laws of the State of Iowa.

Lyle G. TeKippe 6-29-07
Lyle G. TeKippe Date
License number 7060
My license renewal date is December 31, 2008.
Sheets covered by this seal: Individual

List Corners to be Indexed			
Corners	Section	Twp.	Range
NE	12	95N	13W
NW-SE-NE	12	95N	13W

Project Number 07100.IS
FB, New Hampton #2, PGS. 28-29
X:\Section Corners\Sec. 12\12-95-13el.dwg

UNITED STATES PUBLIC LAND SURVEY CORNER CERTIFICATE

OF

Land Survey Monuments situated in Section 12 Township 95 NORTH, Range 13 WEST, of the Fifth Principal Meridian, CHICKASAW County, Iowa. Previously recorded in (NONE) in County Recorder's Office.

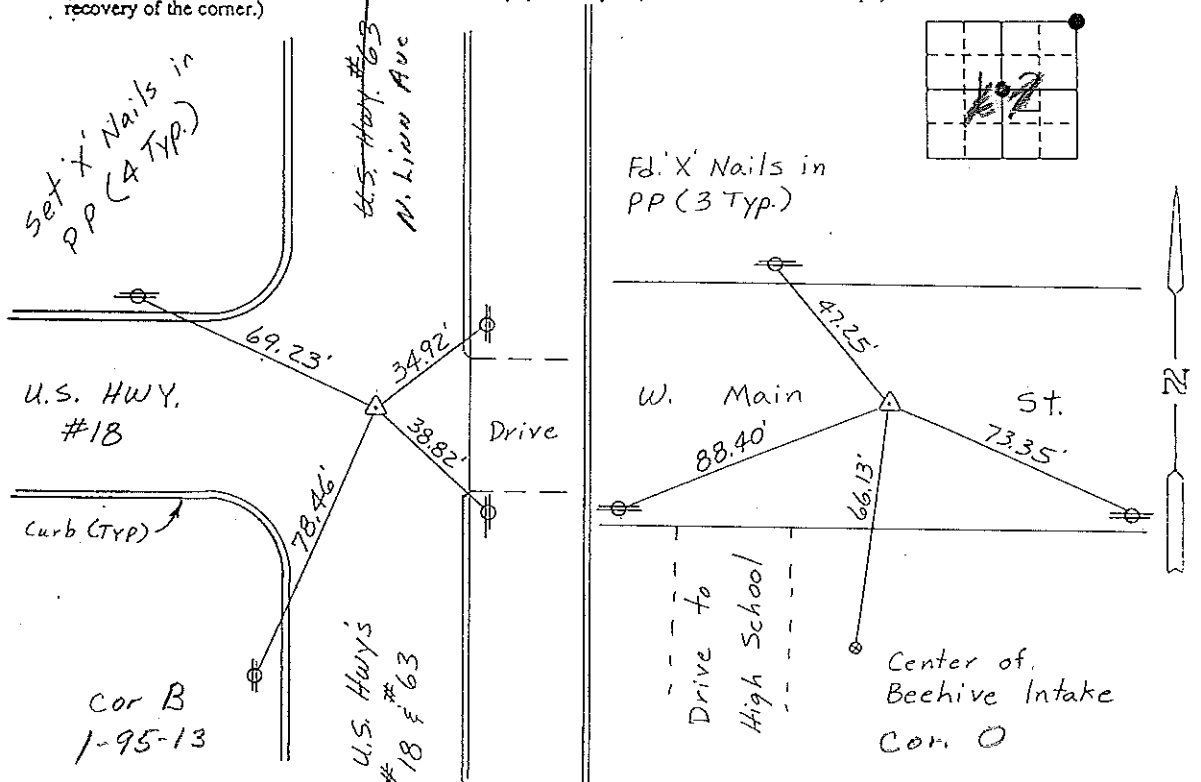
(Show reason for preparing this certificate, the evidence and detailed procedures used in establishing the corner positions and monumentation found or placed.)

Monument Description and Remarks: NE CORNER, SECTION 12-T95N-R13W:
FOUND IDOT ALUMINUM CAP.
CENTER OF SECTION 12-T95N-R13W: SET PK NAIL FROM TIES.

Section 1-95-13
As referred to in
Engr. TIC Book

PLAN - VIEW

(Show a minimum of three reference ties to durable physical objects, relevant monuments and physical conditions that will enable recovery of the corner.)



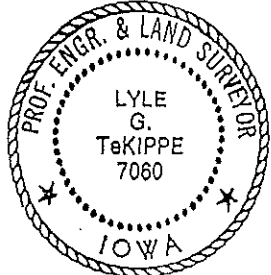
NE CORNER, SECTION 12-T95N-R13W CENTER OF SECTION 12-T95N-R13W

I hereby certify that the survey work was completed and this certificate was prepared by me or under my direct personal supervision and that I am a duly registered land surveyor under the laws of the state of Iowa.

Signature: Lyle G. TeKippe
Name typed or printed: Lyle G. TeKippe

Date: 2-15-93 Reg. No. 7060
My Registration Expires December 31, 1994

Corners	List Corners to be Indexed	Section	Twp	Range
NE Cor.	12	95N	13W	
Center	12	95N	13W	
	COR O	12-95-13		
	COR B	1-95-13		



SEAL

Placed in TIC Book 3/93