

Section 1-95-13  
As referred to in  
Engg. Tie Book

2007-1349

TeKIPPE ENGINEERING, P.C., 128 South Vine Street, West Union, Iowa 52175 Phone (563) 422-5131

UNITED STATES PUBLIC LAND SURVEY CORNER CERTIFICATE

OF 1

Land Survey Monuments situated in Section 12, Township 95 North, Range 13 West of the Fifth Principal Meridian, Chickasaw County, Iowa. Previously recorded in 1. Bk. 2003, Pg. 3705, 2. Bk. 165, Pg. 481 in County Recorder's Office.  
(book, page, document number, etc.)

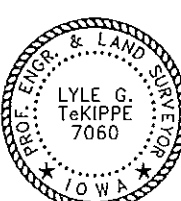
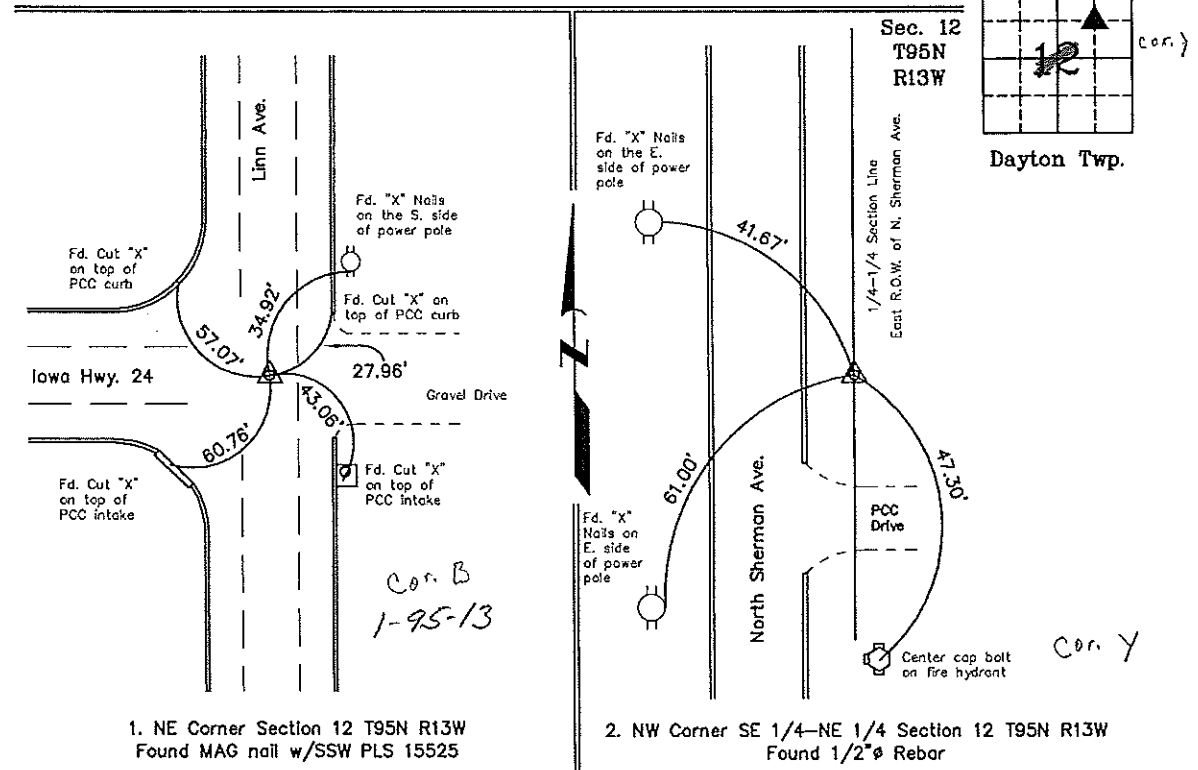
(Show reason for preparing this certificate, the evidence and detailed procedures used in establishing the corner positions and monumentation found or placed.)

**Monument Description and Remarks: 1. NE Corner Section 12 T95N R13W: Found MAG Nail w/stainless steel washer PLS 15525. Previously recorded in the County Recorder's office in Book 2003, Page 3705. One tie was missing, the five other ties remain in place.**

**2. NW Corner SE 1/4-NE 1/4 Section 12 T95N R13W: Found 1/2" Rebar, previously recorded in the County Recorder's office in Book 165, Page 481. Existing ties did not match recorded certificate. Ties were used as shown below.**

PLAN - VIEW

(Show a minimum of three reference ties to durable physical objects, relevant monuments and physical conditions that will enable recovery of the corner.)



I hereby certify that this land surveying document was prepared and the related survey work was performed by me or under my direct personal supervision and that I am a duly licensed Land Surveyor under the laws of the State of Iowa.  
*Lyle G. TeKippe* 6-29-07  
Lyle G. TeKippe Date  
License number 7060  
My license renewal date is December 31, 2008.  
Sheets covered by this seal: Individual

List Corners to be Indexed			
Corners	Section	Twp.	Range
NE	12	95N	13W
NW-SE-NE	12	95N	13W

Project Number 07100.IS  
FB, New Hampton #2, PGS. 28-29  
X:\Section Corners\Sec. 12\12-95-13el.dwg

UNITED STATES PUBLIC LAND SURVEY CORNER CERTIFICATE

OF

Land Survey Monuments situated in Section 12, Township 95 North, Range 13 West, of the Fifth Principal Meridian, CHICKASAW County, Iowa.

Previously recorded in NONE in County Recorder's Office.  
(book, page, document number, etc.)

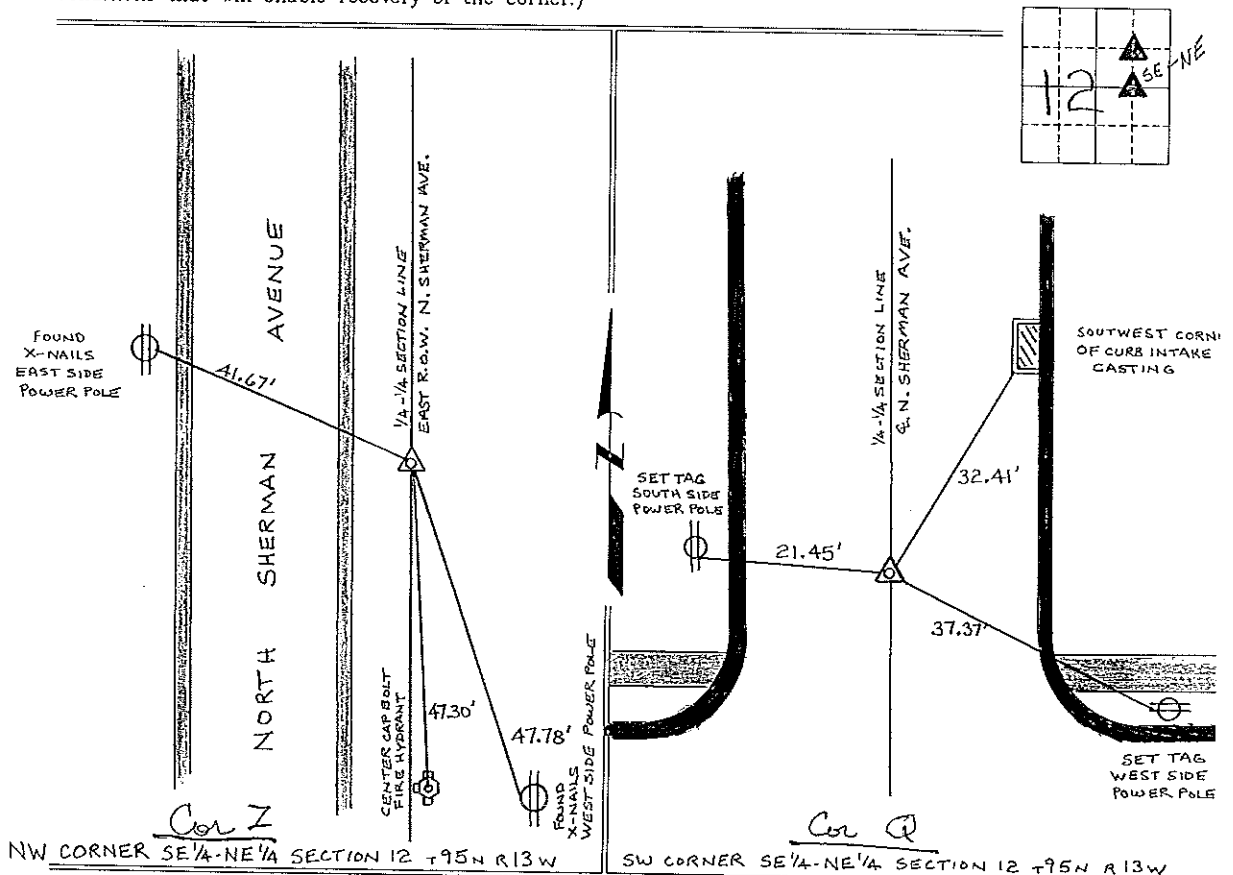
(Show reason for preparing this certificate, the evidence and detailed procedures used in establishing the corner positions and monumentation found or placed.)

Monument Description and Remarks: NW CORNER SE 1/4-NE 1/4 SECTION 12 T95N R13W:  
SET 1/2" Ø REBAR w/CAP 7000 AT THE INTERSECTION OF THE QUARTER-QUARTER SECTION LINES.

Cor Y  
SW CORNER SE 1/4-NE 1/4 SECTION 12 T95N R13W: CUT X IN P.C.C. STREET, BY EXTENDING THE LINE FROM THE NW CORNER NE 1/4-NE 1/4 (RECORDED IN DEEDS BOOK 151, PAGE 262) SOUTH THROUGH THE C OF NORTH SHERMAN AVE (NORTH OF THE R.R. TRACKS), & POSITION ESTABLISHED FROM SURVEY MONUMENTS OF RECORD, AND INTERSECTING THIS LINE WITH THE QUARTER SECTION LINE BETWEEN THE CENTER AND THE EAST 1/4 CORNER. Cor W

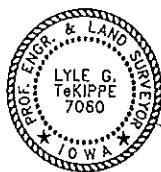
PLAN - VIEW

(Show a minimum of three reference ties to durable physical objects, relevant monuments and physical conditions that will enable recovery of the corner.)



NW CORNER SE 1/4-NE 1/4 SECTION 12 T95N R13W

SW CORNER SE 1/4-NE 1/4 SECTION 12 T95N R13W



I hereby certify that this land surveying document was prepared and the related survey work was performed by me or under my direct personal supervision and that I am a duly licensed Land Surveyor under the laws of the State of Iowa.

Lyle G. TeKippe 11-13-97  
Lyle G. TeKippe Date  
License number 7080  
My license renewal date is December 31, 1998.  
Sheets covered by this seal: Individual

List Corners to be Indexed			
Corners	Section	Twp.	Range
NW-SE-NE	12	95N	13W
	Cor Y	12-95-13	
SW-SE-NE	12	95N	13W

Cor W 12-95-13

Placed in the book 11/25/97