

Chickasaw Co. Recorder  
 Cindy Messersmith  
**Fee Book 2014-0590**  
 05/05/2014 @0853AM  
 SEC COR CERT  
 Book: Page: # Pages: 1  
 Total Fees: \$7.00

Prepared by & Return to: Herold - Reicks Surveying, 10 East Main Street, New Hampton, IA 50659, Ph. 641-394-2725

**UNITED STATES PUBLIC LAND SURVEY CORNER CERTIFICATE**

Land Survey Monuments situated in Section 13, Township 95 North, Range 13 West of the Fifth Principal Meridian, Chickasaw County, Iowa. 1.) Previously recorded in Bk. 153, Pg. 145, in the County Recorder's office. 2.) Not previously recorded in the County Recorder's office.

This certificate is being prepared in compliance with Iowa Code Chapter 355.11 because:

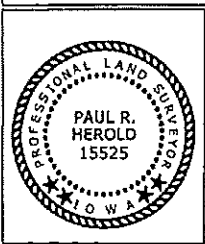
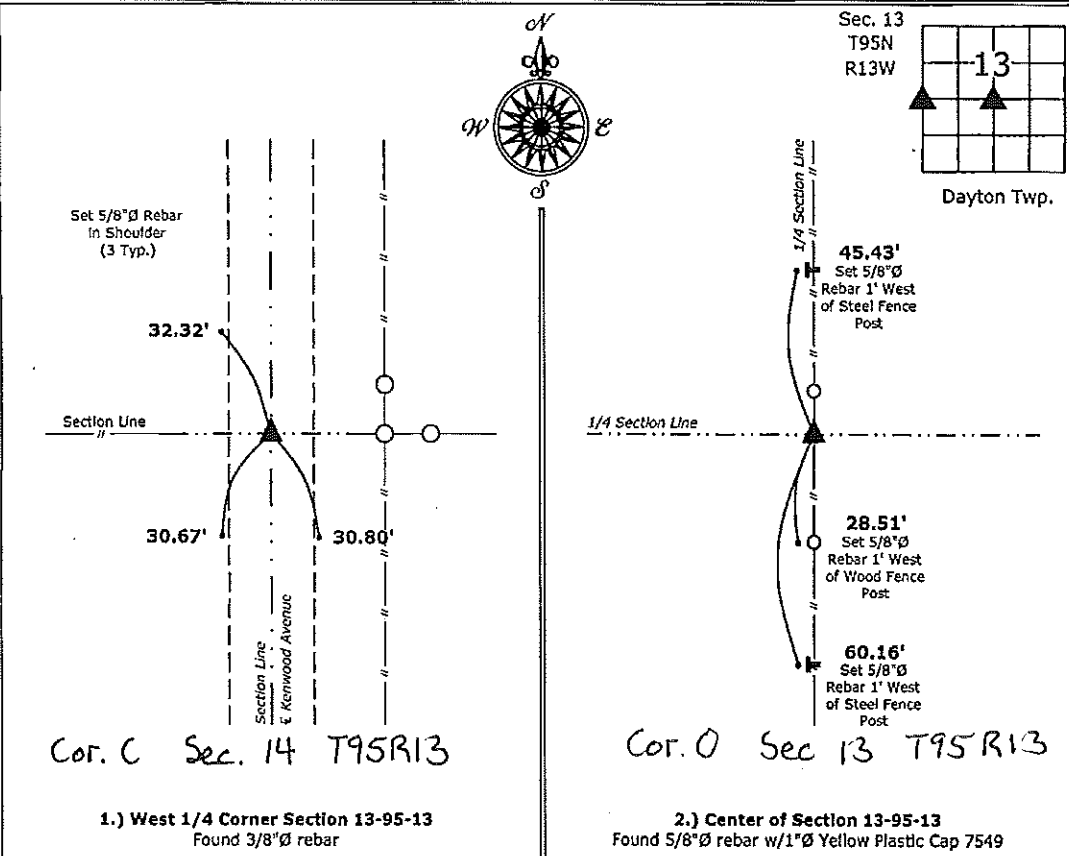
- 2  There is no certificate on file for this corner.
- 1  There are no longer three valid ties of record.
- There are changes to reference ties of record.
- There is change of monumentation of record.
- To clarify description of record monument (ties).

Monument Description and Remarks:

- 1.) **West 1/4 Corner:** Found 3/8"Ø rebar with information obtained from a previous Section Corner Certificate, all ties were missing, set new ties to update the corner.
- 2.) **Center of Section:** Found 5/8"Ø rebar w/1"Ø Yellow Plastic Cap 7549 with information obtained on a survey and plat made by Thomas V. Craft, recorded May 8, 1984 on file in the Chickasaw County Recorders Office.

**PLAN - VIEW**

(Show a minimum of three reference ties to durable physical objects, relevant monuments and physical conditions that will enable recovery of the corner.)



I hereby certify that this land surveying document was prepared and the related survey work was performed by me or under my direct personal supervision and that I am a duly licensed Land Surveyor under the laws of the State of Iowa.  
*Paul R. Herold 5-2-14*  
 Paul R. Herold Date:  
 License number 15525  
 My license renewal date is December 31, 2014.  
 Sheets covered by this seal: Individual sheet only

List Corners to be Indexed			
Corners	Section	Twp.	Range
W 1/4	13	95	13
CTR	13	95	13

Project Number: 2014-021  
 FB: New Hampton 2, Pgs. 18-19

File: S:\\_CAD Projects\County Control Systems\CHICKASAW\CHICK-28 (New Hampton)\CHICK-28.dwg, 5/2/2014 4:25:39 PM