

Section 13-95-13  
As referred to in  
Eng. Tie Book

FILED 2004-0475  
RECORDER'S OFFICE  
CHICKASAW COUNTY, IOWA  
2004 MAR 3 AM 8 50  
CINDY MESSERSMITH  
COUNTY RECORDER

TEKIPPE ENGINEERING, P.C., 128 South Vine Street, West Union, Iowa 52175 Phone (563) 422-6131

UNITED STATES PUBLIC LAND SURVEY CORNER CERTIFICATE

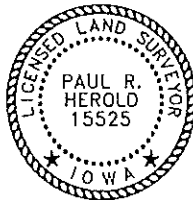
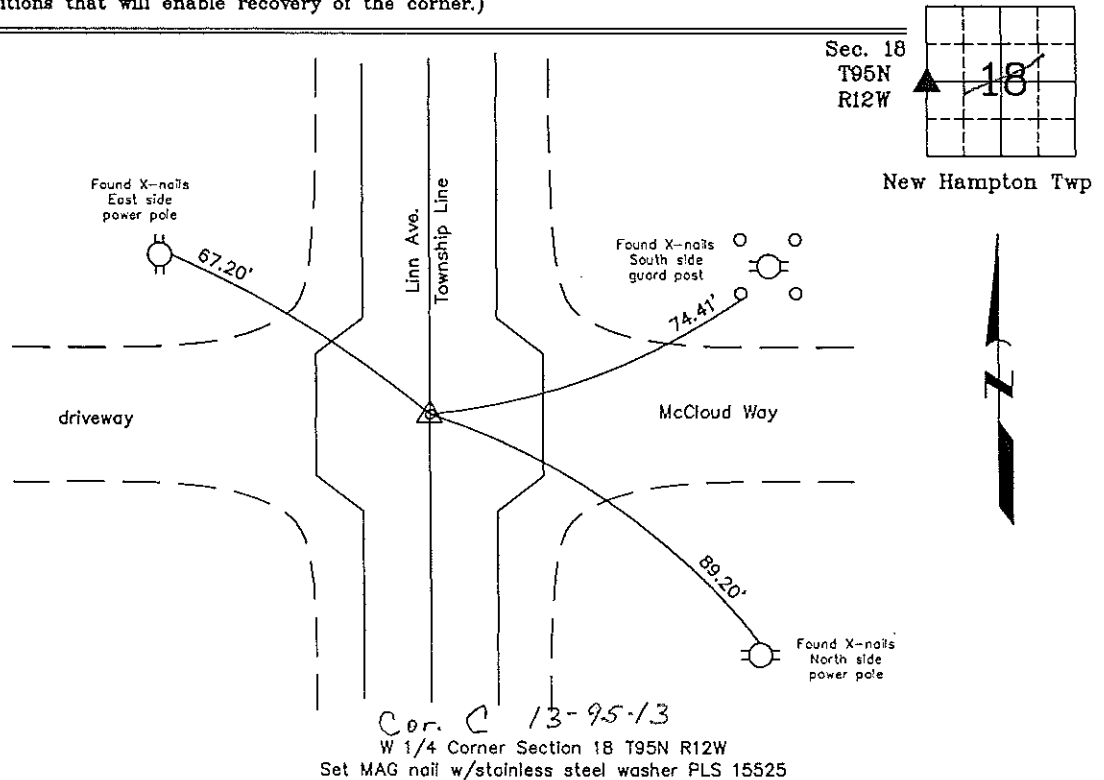
OF 13  
Land Survey Monuments situated in Section 18, Township 95 North, Range 12/3 West of the Fifth Principal Meridian, CHICKASAW County, Iowa.  
Previously recorded in Book 150 Page 242 in County Recorder's Office.  
(book, page, document number, etc.)

(Show reason for preparing this certificate, the evidence and detailed procedures used in establishing the corner positions and monumentation found or placed.)

Monument Description and Remarks: W 1/4 Corner Section 18 T95N R12W: The monument noted in the previous Section Corner certificate, recorded in the Chickasaw County Recorder's Office in Book 150, Page 242, was covered by a HMA overlay. Set MAG nail w/stainless steel washer PLS 15525 using reference ties from previous Section Corner Certificate.

PLAN - VIEW

(Show a minimum of three reference ties to durable physical objects, relevant monuments and physical conditions that will enable recovery of the corner.)



I hereby certify that this land surveying document was prepared and the related survey work was performed by me or under my direct personal supervision and that I am a duly licensed Land Surveyor under the laws of the State of Iowa.

*Paul R. Herold* 3-2-04  
Paul R. Herold Date

License number 15525  
My license renewal date is December 31, 2004.  
Sheets covered by this seal: Individual

List Corners to be Indexed			
Corners	Section	Twp.	Range
W 1/4	18	95N	12W
E 1/4	13	95N	13W

X:\Section Corners\Sec. 18\18-95-12k.dwg  
Project Number 03072.LS

COUNTY ENGINEER'S COPY

# UNITED STATES PUBLIC LAND SURVEY CORNER CERTIFICATE

OF

Land Survey Monuments situated in Section 13, Township 95N, Range 13W, of the Fifth Principal Meridian, CHICKASAW County, Iowa. Previously recorded in (NONE) in County Recorder's Office.

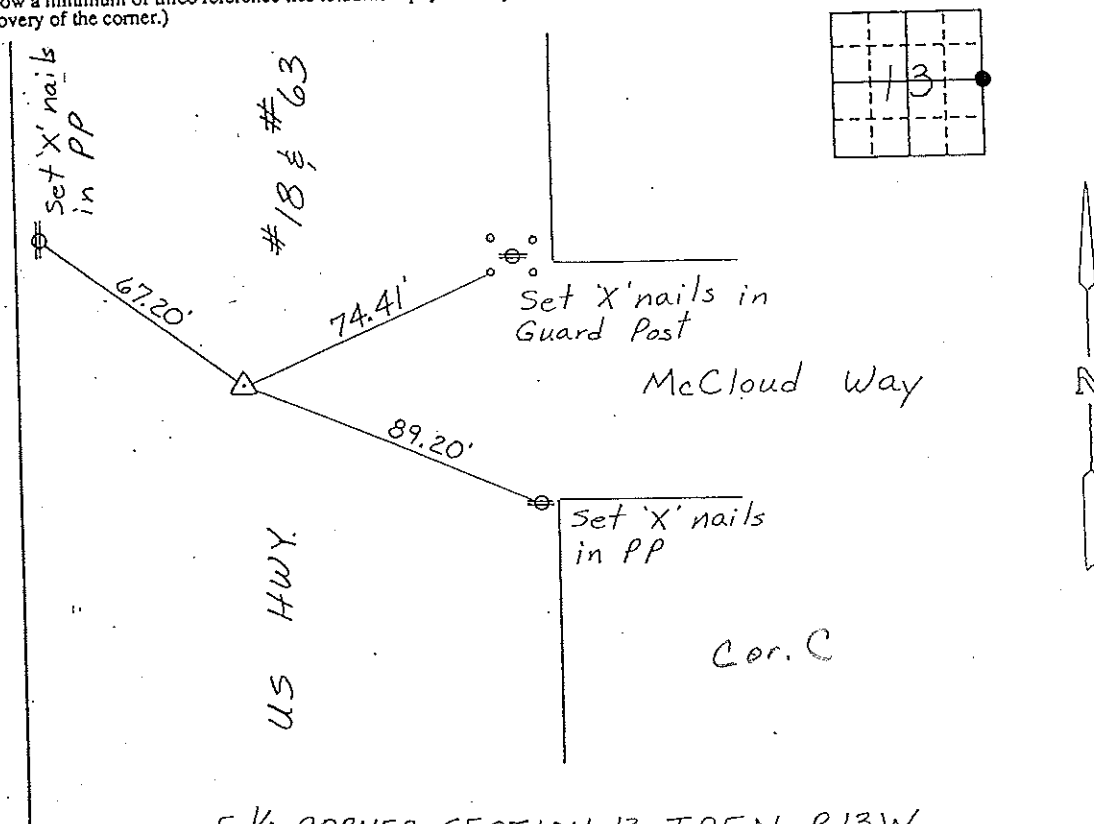
(book, page, document number, etc.)

(Show reason for preparing this certificate, the evidence and detailed procedures used in establishing the corner positions and monumentation found or placed.)

Monument Description and Remarks: E 1/4 CORNER, SECTION 13-T95N-R13W:  
FOUND IDOT ALUMINUM CAP.

## PLAN - VIEW

(Show a minimum of three reference ties to durable physical objects, relevant monuments and physical conditions that will enable recovery of the corner.)

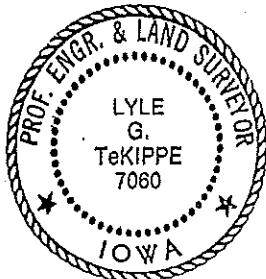


E 1/4 CORNER, SECTION 13-T95N-R13W

I hereby certify that the survey work was completed and this certificate was prepared by me or under my direct personal supervision and that I am a duly registered land surveyor under the laws of the state of Iowa.

Signature: Lyle G. TeKippe  
Name typed or printed: Lyle G. TeKippe  
Date: 6-11-92 Reg. No. 7060

Corners	Section	Twp	Range
E 1/4	13	95N	13W



SEAL

*Corner C 13-95-13*  
*Placed in tree*  
*Book 9/2/92*

Chickasaw COUNTY

LAND SURVEY MONUMENT RECORD

Section 13-95-13  
As referred to in  
Engr Tie Book

Sec. 18 T. 95 N R. 12 W  
West Quarter Corner

All items to be completed. Please print or type.

1. Type of Monument  
(check one)

- Section Corner
- Bench Mark
- Quarter Corner
- Other .....

2. Description of Evidence found and location.

Found lead plug near centerline of concrete pavement near sta 499+47.4 at 0.36', as per found references on record at county engineers office.

3. Description of monument and/or accessories established by you to perpetuate the location of this point.

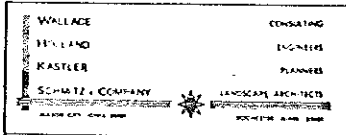
see sketch

Survey Crew  
L. Boyer  
T. Lotnik  
L. Thompson

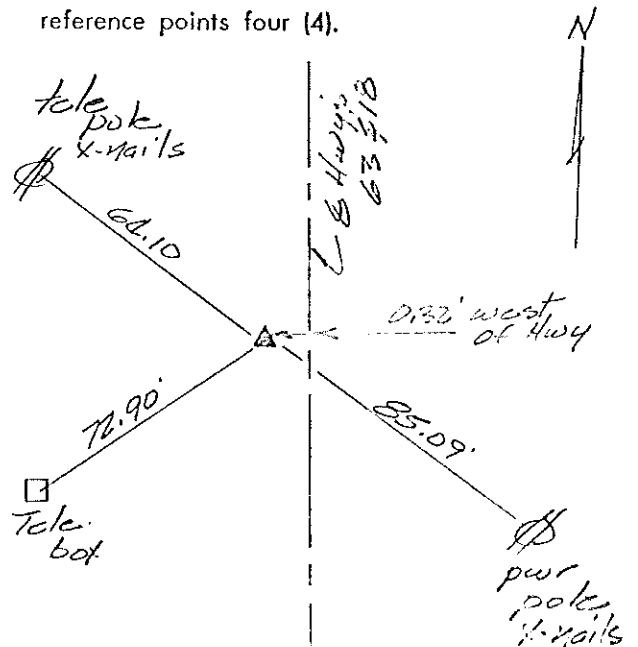
Date of Field Work 4-21-80

Signed Carl J. Kastler RLS 5343

Firm Name



4. Sketch showing relative location of monument and reference points. Show supporting and/or contradictory evidence where applicable. (Minimum No. of reference points four (4).)



Cor. C  
13-95-13