



Prepared by & Return to: Herold - Recks Surveying, 101 East Main Street, New Hampton, IA 50659, Ph. 641-994-2725

### CORRECTIVE UNITED STATES PUBLIC LAND SURVEY CORNER CERTIFICATE

Land Survey Monuments situated in Section 13, Township 95 North, Range 13 West of the Fifth Principal Meridian, Chickasaw County, Iowa. 1.) Previously recorded in Bk. 150, Pg. 240, in the County Recorder's office. 2.) Previously recorded in Bk. 150, Pg. 241, in the County Recorder's office.

This certificate is being prepared in compliance with Iowa Code Chapter 355.11 because:

- 1 & 2
- There is no certificate on file for this corner.
  - There are no longer three valid ties of record.
  - There are changes to reference ties of record.
  - There is change of monumentation of record.
  - To clarify description of record monument (ties).

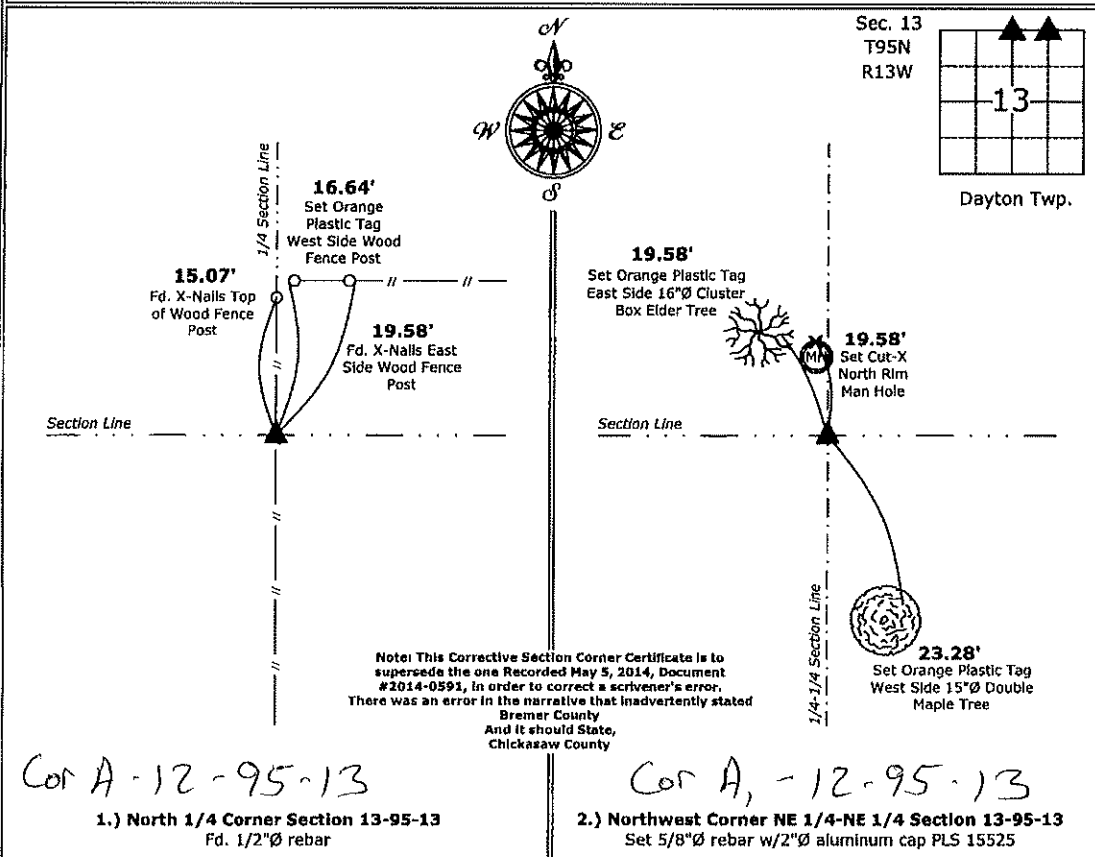
Monument Description and Remarks:

1.) North 1/4 Corner: Fd. 1/2"Ø Rebar with information obtained from a previous Section Corner Certificate, set new tie to update the corner.

2.) Northwest Corner NE 1/4-NE 1/4: Set 5/8"Ø rebar with 2"Ø aluminum cap PLS 15525 at record distance from the adjacent Corners with information obtained on a survey and plat made by Lyle G. Tekippe, recorded in Bk. 150, Pgs. 139-141, on file in the Chickasaw County Recorders Office.

#### PLAN - VIEW

(Show a minimum of three reference ties to durable physical objects, relevant monuments and physical conditions that will enable recovery of the corner.)



I hereby certify that this land surveying document was prepared and the related survey work was performed by me or under my direct personal supervision and that I am a duly licensed Land Surveyor under the laws of the State of Iowa.

*Paul R. Herold* 9-25-19  
 Paul R. Herold Date:

License number 15525  
 My license renewal date is December 31, 2020.  
 Sheets covered by this seal: Individual sheet only

List Corners to be Indexed			
Corners	Section	Twp.	Range
N 1/4	13	95	13
NW-NE-NE	13	95	13

Project Number: 2014-021  
 FB: New Hampton 2, Pgs. 18-19

File: W:\CHICK-28 2009-2018\CHICK-28 - 2013.dwg, 9/25/2019 9:11:17 AM

Chickasaw Co. Recorder  
 Cindy Messersmith  
**Fee Book 2014-0591**  
 05/05/2014 @0855AM  
 SCC SEC COR CERT  
 Book: Page: # Pages: 1  
 Total Fees: \$7.00

Prepared by & Return to: Herold - Recks Surveying, 10 East Main Street, New Hampton, IA 50658, Ph. 641-394-2725

**UNITED STATES PUBLIC LAND SURVEY CORNER CERTIFICATE**

Land Survey Monuments situated in Section <sup>13</sup> 13, Township 95 North, Range 13 West of the Fifth Principal Meridian, Chickasaw County, Iowa. 1.) Previously recorded in Bk. 150, Pg. 240, in the County Recorder's office. 2.) Previously recorded in Bk. 150, Pg. 241, in the County Recorder's office.

This certificate is being prepared in compliance with Iowa Code Chapter 355.11 because:

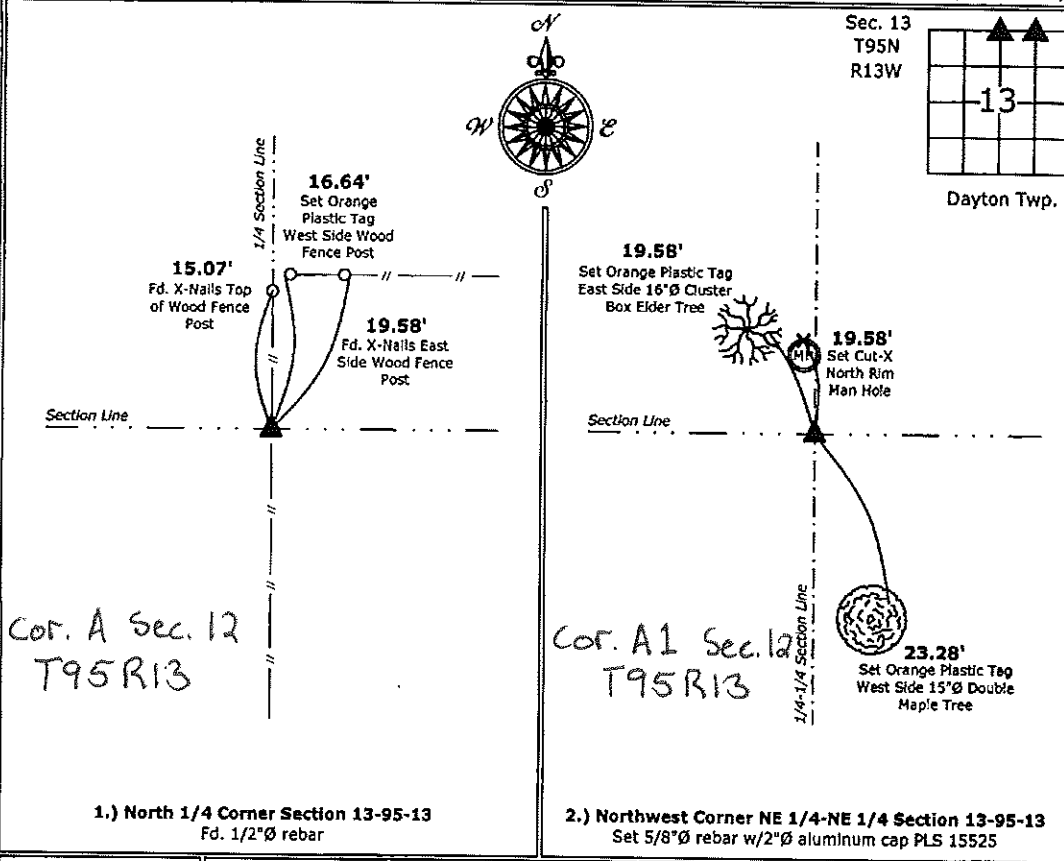
- 1 & 2
- There is no certificate on file for this corner.
  - There are no longer three valid ties of record.
  - There are changes to reference ties of record.
  - There is change of monumentation of record.
  - To clarify description of record monument (ties).

**Monument Description and Remarks:**

- 1.) North 1/4 Corner: Fd. 1/2"Ø Rebar with information obtained from a previous Section Corner Certificate, set new tie to update the corner.
- 2.) Northwest Corner NE 1/4-NE 1/4: Set 5/8"Ø rebar with 2"Ø aluminum cap PLS 15525 at record distance from the adjacent Corners with information obtained on a survey and plat made by Lyle G. Tekippe, recorded in Bk. 150, Pgs. 139-141, on file in the Bremer County Recorders Office.

**PLAN - VIEW**

(Show a minimum of three reference ties to durable physical objects, relevant monuments and physical conditions that will enable recovery of the corner.)



1.) North 1/4 Corner Section 13-95-13  
 Fd. 1/2"Ø rebar

2.) Northwest Corner NE 1/4-NE 1/4 Section 13-95-13  
 Set 5/8"Ø rebar w/2"Ø aluminum cap PLS 15525



I hereby certify that this land surveying document was prepared and the related survey work was performed by me or under my direct personal supervision and that I am a duly licensed Land Surveyor under the laws of the State of Iowa.

*Paul R. Herold* 5-2-14  
 Paul R. Herold Date:  
 License number 15525  
 My license renewal date is December 31, 2014.  
 Sheets covered by this seal: Individual sheet only

List Corners to be Indexed			
Corners	Section	Twp.	Range
N 1/4	13	95	13
NW-NE-NE	13	95	13

Project Number: 2014-021  
 FB: New Hampton 2, Pgs. 18-19

File: S:\\_CAD Projects\County Control Systems\CHICKASAW\CHICK-28 (New Hampton)\CHICK-28.dwg, 5/2/2014 4:25:32 PM

# UNITED STATES PUBLIC LAND SURVEY CORNER CERTIFICATE

OF

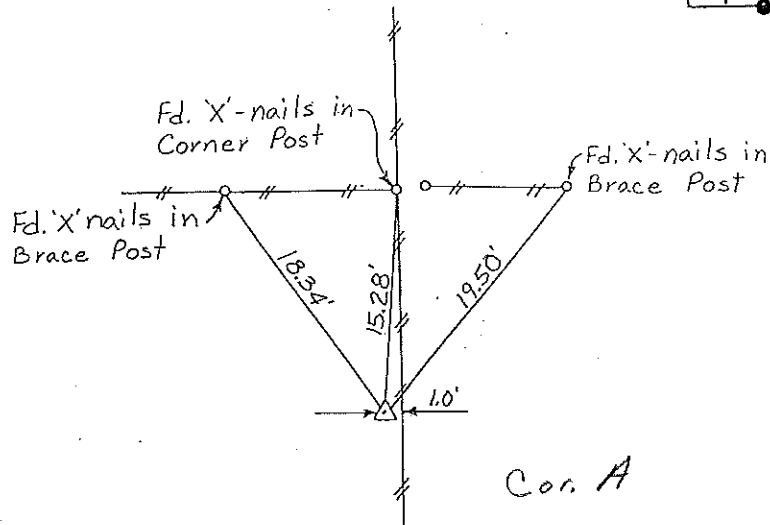
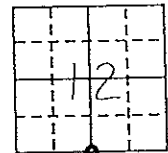
Land Survey Monuments situated in Section 12, Township 95N, Range 13W, of the Fifth Principal Meridian, CHICKASAW County, Iowa. Previously recorded in (NONE) in County Recorder's Office.

(Show reason for preparing this certificate, the evidence and detailed procedures used in establishing the corner positions and monumentation found or placed.)

Monument Description and Remarks: S 1/4 CORNER, SECTION 12-T95N-R13W :  
FOUND 1/2" Ø REBAR.

### PLAN - VIEW

(Show a minimum of three reference ties to durable physical objects, relevant monuments and physical conditions that will enable recovery of the corner.)



S 1/4 CORNER, SECTION 12-T95N-R13W

I hereby certify that the survey work was completed and this certificate was prepared by me or under my direct personal supervision and that I am a duly registered land surveyor under the laws of the state of Iowa.

Signature: Lyle G. TeKippe  
Name typed or printed: Lyle G. TeKippe

Date: 6-11-92 Reg. No. 7060

Corners	Section	Twp	Range
S 1/4	12	95N	13W

Cor. A 12-95-13

SEAL

